



GIMAP2 Polyclonal Antibody

Catalog No	BYab-16163
Isotype	IgG
Reactivity	Human;Rat;Mouse;
Applications	WB;IF;ELISA
Gene Name	GIMAP2
Protein Name	GTPase IMAP family member 2
Immunogen	The antiserum was produced against synthesized peptide derived from human GIMAP2. AA range:201-250
Specificity	GIMAP2 Polyclonal Antibody detects endogenous levels of GIMAP2 protein.
Formulation	Liquid in PBS containing 50% glycerol, 0.5% BSA and 0.02% sodium azide.
Source	Polyclonal, Rabbit,IgG
Purification	The antibody was affinity-purified from rabbit antiserum by affinity-chromatography using epitope-specific immunogen.
Dilution	Western Blot: 1/500 - 1/2000. Immunofluorescence: 1/200 - 1/1000. ELISA: 1/20000. Not yet tested in other applications.
Concentration	1 mg/ml
Purity	≥90%
Storage Stability	-20°C/1 year
Synonyms	GIMAP2; IMAP2; GTPase IMAP family member 2; Immunity-associated protein 2; hIMAP2
Observed Band	38kD
Cell Pathway	Lipid droplet .
Tissue Specificity	Detected in T-cells.
Function	similarity:Belongs to the IAN GTP-binding protein family.,
Background	This gene encodes a protein belonging to the GTP-binding superfamily and to the immuno-associated nucleotide (IAN) subfamily of nucleotide-binding proteins. In humans, the IAN subfamily genes are located in a cluster at 7q36.1. [provided by RefSeq, Jul 2008],
matters needing attention	Avoid repeated freezing and thawing!

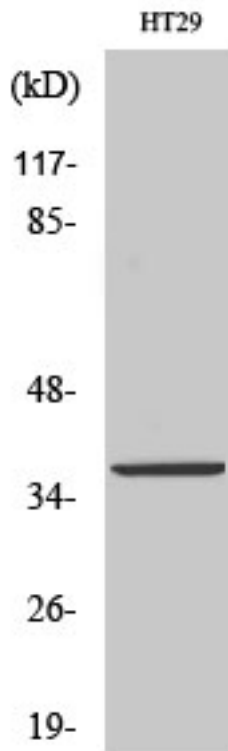
Nanjing BYabscience technology Co.,Ltd



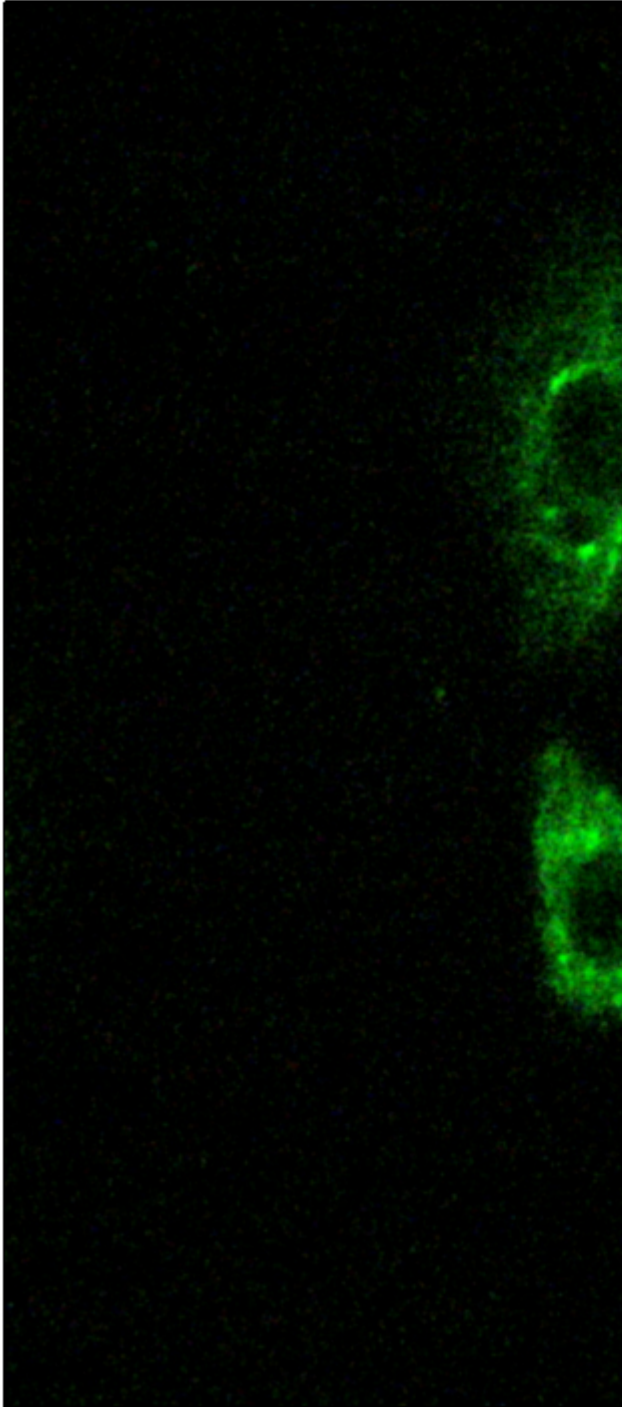
Usage suggestions

This product can be used in immunological reaction related experiments. For more information, please consult technical personnel.

Products Images



Western Blot analysis of various cells using GIMAP2 Polyclonal Antibody



Immunofluorescence analysis of A549 cells, using GIMAP2 Antibody. The picture on the right is blocked with the synthesized peptide.



Western blot analysis of lysates from HT-29 cells, using GIMAP2 Antibody. The lane on the right is blocked with the synthesized peptide.

GIMAP2-



Nanjing BYabscience technology Co.,Ltd

网址: www.njbybio.com

官方热线: 025-5229-8998

监督电话: 15950492658