



Epac Polyclonal Antibody

Catalog No	BYab-16155
Isotype	IgG
Reactivity	Human;Mouse;Rat
Applications	WB;ELISA
Gene Name	RAPGEF3
Protein Name	Rap guanine nucleotide exchange factor 3
Immunogen	The antiserum was produced against synthesized peptide derived from human RAPGEF3. AA range:712-761
Specificity	Epac Polyclonal Antibody detects endogenous levels of Epac protein.
Formulation	Liquid in PBS containing 50% glycerol, 0.5% BSA and 0.02% sodium azide.
Source	Polyclonal, Rabbit,IgG
Purification	The antibody was affinity-purified from rabbit antiserum by affinity-chromatography using epitope-specific immunogen.
Dilution	Western Blot: 1/500 - 1/2000. ELISA: 1/40000. Not yet tested in other applications.
Concentration	1 mg/ml
Purity	≥90%
Storage Stability	-20°C/1 year
Synonyms	RAPGEF3; CGEF1; EPAC; EPAC1; Rap guanine nucleotide exchange factor 3; Exchange factor directly activated by cAMP 1; Exchange protein directly activated by cAMP 1; EPAC 1; Rap1 guanine-nucleotide-exchange factor directly activated by cAMP;
Observed Band	100kD
Cell Pathway	Endomembrane system .
Tissue Specificity	Widely expressed with highest levels in adult kidney, heart, thyroid and brain, and fetal kidney.
Function	caution:It is uncertain whether Met-1 or Met-43 is the initiator.,domain:The DEP domain is involved in membrane localization independent from regulation by cAMP.,function:Guanine nucleotide exchange factor (GEF) for RAP1A and RAP2A small GTPases that is activated by binding cAMP.,similarity:Contains 1 cyclic nucleotide-binding domain.,similarity:Contains 1 DEP domain.,similarity:Contains 1 N-terminal Ras-GEF domain.,similarity:Contains 1 Ras-GEF domain.,tissue specificity:Widely expressed with highest levels in adult

Nanjing BYabscience technology Co.,Ltd



kidney, heart, thyroid and brain, and fetal kidney.,

Background

caution:It is uncertain whether Met-1 or Met-43 is the initiator.,domain:The DEP domain is involved in membrane localization independent from regulation by cAMP.,function:Guanine nucleotide exchange factor (GEF) for RAP1A and RAP2A small GTPases that is activated by binding cAMP.,similarity:Contains 1 cyclic nucleotide-binding domain.,similarity:Contains 1 DEP domain.,similarity:Contains 1 N-terminal Ras-GEF domain.,similarity:Contains 1 Ras-GEF domain.,tissue specificity:Widely expressed with highest levels in adult kidney, heart, thyroid and brain, and fetal kidney.,

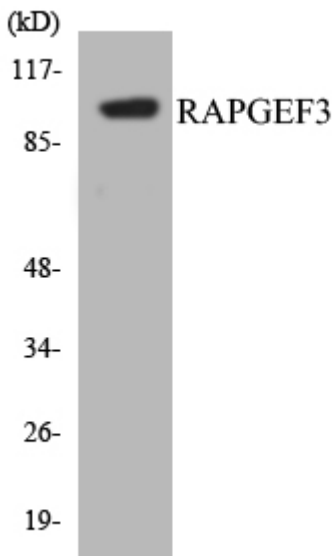
matters needing attention

Avoid repeated freezing and thawing!

Usage suggestions

This product can be used in immunological reaction related experiments. For more information, please consult technical personnel.

Products Images



Western blot analysis of the lysates from HeLa cells using RAPGEF3 antibody.