



ARHGEF9 Polyclonal Antibody

Catalog No	BYab-16141
Isotype	IgG
Reactivity	Human;Mouse;Rat
Applications	IHC;IF;ELISA
Gene Name	ARHGEF9
Protein Name	Rho guanine nucleotide exchange factor 9
Immunogen	The antiserum was produced against synthesized peptide derived from human ARHGEF9. AA range:399-448
Specificity	ARHGEF9 Polyclonal Antibody detects endogenous levels of ARHGEF9 protein.
Formulation	Liquid in PBS containing 50% glycerol, 0.5% BSA and 0.02% sodium azide.
Source	Polyclonal, Rabbit,IgG
Purification	The antibody was affinity-purified from rabbit antiserum by affinity-chromatography using epitope-specific immunogen.
Dilution	IHC: 1/100 - 1/300. ELISA: 1/40000.. IF 1:50-200
Concentration	1 mg/ml
Purity	≥90%
Storage Stability	-20°C/1 year
Synonyms	ARHGEF9; ARHGDH9; KIAA0424; Rho guanine nucleotide exchange factor 9; Collybistin; PEM-2 homolog; Rac/Cdc42 guanine nucleotide exchange factor 9
Observed Band	
Cell Pathway	Cytoplasm . Cell junction, synapse, postsynaptic density .
Tissue Specificity	Detected in brain. Detected at low levels in heart.
Function	disease:Defects in ARHGEF9 are a cause of startle disease with epilepsy (STHEE) [MIM:300607]; also known as hyperekplexia with epilepsy. Startle disease is a genetically heterogeneous neurologic disorder. STHE is characterized by muscular rigidity of central nervous system origin, particularly in the neonatal period, and by an exaggerated startle response to unexpected acoustic or tactile stimuli.,function:Acts as guanine nucleotide exchange factor (GEF) for CDC42. Promotes formation of GPHN clusters.,similarity:Contains 1 DH (DBL-homology) domain.,similarity:Contains 1 PH domain.,similarity:Contains 1 SH3 domain.,subunit:Interacts with GPHN.,tissue specificity:Detected in brain. Detected at low levels in heart.,

Nanjing BYabscience technology Co.,Ltd



Background

The protein encoded by this gene is a Rho-like GTPase that switches between the active (GTP-bound) state and inactive (GDP-bound) state to regulate CDC42 and other genes. Defects in this gene are a cause of startle disease with epilepsy (STHEE), also known as hyperekplexia with epilepsy. Three transcript variants encoding different isoforms have been found for this gene.[provided by RefSeq, Mar 2010],

matters needing attention

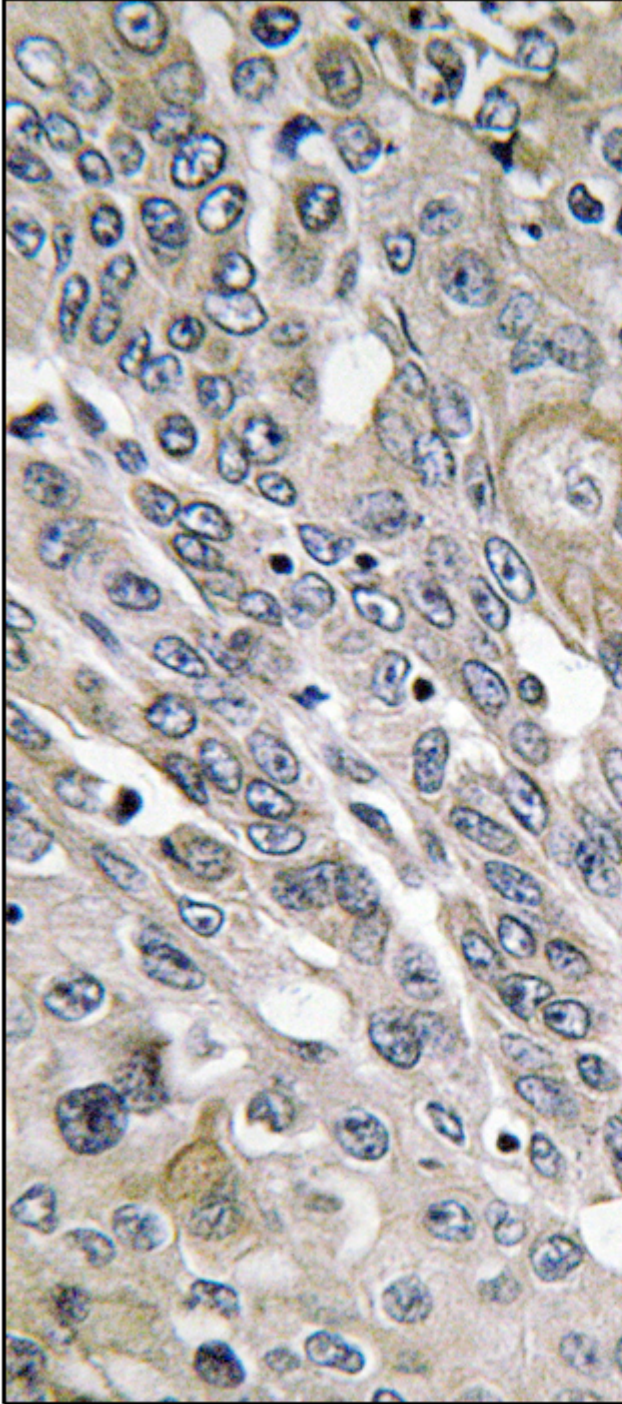
Avoid repeated freezing and thawing!

Usage suggestions

This product can be used in immunological reaction related experiments. For more information, please consult technical personnel.



Products Images



Immunohistochemistry analysis of paraffin-embedded human lung carcinoma tissue, using ARHGEF9 Antibody. The picture on the right is blocked with the synthesized peptide.

Nanjing BYabscience technology Co.,Ltd

网址: www.njbybio.com

官方热线: 025-5229-8998

监督电话: 15950492658



Nanjing BYabscience technology Co.,Ltd

网址: www.njbybio.com

官方热线: 025-5229-8998

监督电话: 15950492658