



ARHGAP22 Polyclonal Antibody

Catalog No	BYab-16135
Isotype	IgG
Reactivity	Human;Rat;Mouse;
Applications	WB;IHC;IF;ELISA
Gene Name	ARHGAP22
Protein Name	Rho GTPase-activating protein 22
Immunogen	The antiserum was produced against synthesized peptide derived from human RHG22. AA range:565-614
Specificity	ARHGAP22 Polyclonal Antibody detects endogenous levels of ARHGAP22 protein.
Formulation	Liquid in PBS containing 50% glycerol, 0.5% BSA and 0.02% sodium azide.
Source	Polyclonal, Rabbit,IgG
Purification	The antibody was affinity-purified from rabbit antiserum by affinity-chromatography using epitope-specific immunogen.
Dilution	WB: 1/500 - 1/2000. IHC: 1/100 - 1/300. ELISA: 1/40000.. IF 1:50-200
Concentration	1 mg/ml
Purity	≥90%
Storage Stability	-20°C/1 year
Synonyms	ARHGAP22; RHOGAP2; Rho GTPase-activating protein 22; Rho-type GTPase-activating protein 22
Observed Band	77kD
Cell Pathway	Cytoplasm . Nucleus . Mainly cytoplasmic. Some fraction is nuclear (By similarity).
Tissue Specificity	Brain,Erythroleukemia,Lung,
Function	function:Rho GTPase-activating protein involved in the signal transduction pathway that regulates endothelial cell capillary tube formation during angiogenesis. Acts as a GTPase activator for the RAC1 by converting it to an inactive GDP-bound state. Inhibits RAC1-dependent lamellipodia formation. May also play a role in transcription regulation via its interaction with VEZF1, by regulating activity of the endothelin-1 (EDN1) promoter.,similarity:Contains 1 PH domain.,similarity:Contains 1 Rho-GAP domain.,subcellular location:Mainly cytoplasmic. Some fraction is nuclear.,subunit:Interacts with VEZF1.,

Nanjing BYabscience technology Co.,Ltd



Background

This gene encodes a member of the GTPase activating protein family which activates a GTPase belonging to the RAS superfamily of small GTP-binding proteins. The encoded protein is insulin-responsive, is dependent on the kinase Akt and requires the Akt-dependent 14-3-3 binding protein which binds sequentially to two serine residues. The result of these interactions is regulation of cell motility. Multiple transcript variants encoding different isoforms have been found for this gene. [provided by RefSeq, Dec 2011],

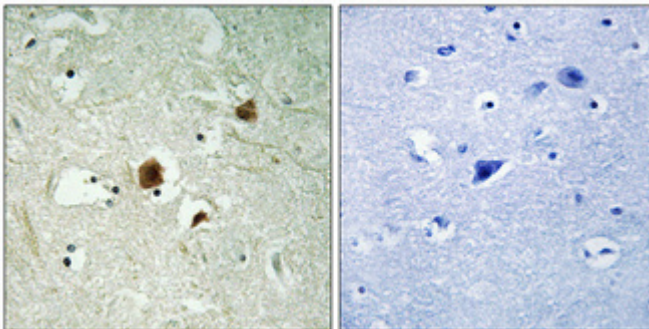
matters needing attention

Avoid repeated freezing and thawing!

Usage suggestions

This product can be used in immunological reaction related experiments. For more information, please consult technical personnel.

Products Images



Immunohistochemical analysis of paraffin-embedded Human brain. Antibody was diluted at 1:100(4° overnight). High-pressure and temperature Tris-EDTA,pH8.0 was used for antigen retrieval. Negative contrl (right) obtained from antibody was pre-absorbed by immunogen peptide.



Western blot analysis of lysates from K562 cells, using RHG22 Antibody. The lane on the right is blocked with the synthesized peptide.

RHG22 --



Nanjing BYabscience technology Co.,Ltd

网址: www.njbybio.com

官方热线: 025-5229-8998

监督电话: 15950492658