



AGBL4 Polyclonal Antibody

Catalog No	BYab-16125
Isotype	IgG
Reactivity	Human;Rat;Mouse;
Applications	WB;ELISA
Gene Name	AGBL4
Protein Name	Cytosolic carboxypeptidase 6
Immunogen	The antiserum was produced against synthesized peptide derived from human AGBL4. AA range:431-480
Specificity	AGBL4 Polyclonal Antibody detects endogenous levels of AGBL4 protein.
Formulation	Liquid in PBS containing 50% glycerol, 0.5% BSA and 0.02% sodium azide.
Source	Polyclonal, Rabbit,IgG
Purification	The antibody was affinity-purified from rabbit antiserum by affinity-chromatography using epitope-specific immunogen.
Dilution	Western Blot: 1/500 - 1/2000. ELISA: 1/20000. Not yet tested in other applications.
Concentration	1 mg/ml
Purity	≥90%
Storage Stability	-20°C/1 year
Synonyms	AGBL4; CCP6; Cytosolic carboxypeptidase 6; ATP/GTP-binding protein-like 4
Observed Band	62kD
Cell Pathway	Cytoplasm, cytosol . Cytoplasm, cytoskeleton, microtubule organizing center, centrosome, centriole . Golgi apparatus . Cytoplasm, cytoskeleton, cilium basal body . Colocalizes with gamma-tubulin in the centrioles at interphase and dividing cells and with glutamylated tubulin in basal bodies of ciliated cells. .
Tissue Specificity	Brain,Whole embryo,
Function	cofactor: Binds 1 zinc ion per subunit.,function: May play a role in the processing of tubulin.,similarity: Belongs to the peptidase M14 family.,
Background	cofactor: Binds 1 zinc ion per subunit.,function: May play a role in the processing of tubulin.,similarity: Belongs to the peptidase M14 family.,
matters needing attention	Avoid repeated freezing and thawing!

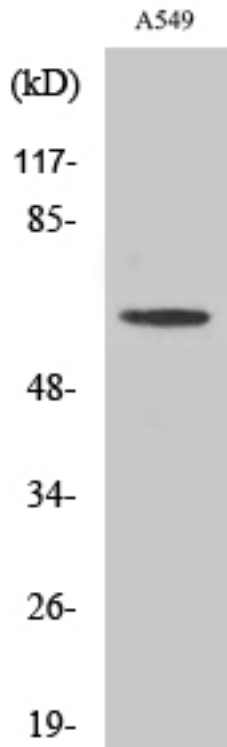
Nanjing BYabscience technology Co.,Ltd



Usage suggestions

This product can be used in immunological reaction related experiments. For more information, please consult technical personnel.

Products Images



Western Blot analysis of various cells using AGLB4 Polyclonal Antibody



Western blot analysis of lysates from A549, HeLa, and Jurkat cells, using AGBL4 Antibody. The lane on the right is blocked with the synthesized peptide.

CBCP6 --



Nanjing BYabscience technology Co.,Ltd

网址: www.njbybio.com

官方热线: 025-5229-8998

监督电话: 15950492658