



CdGAP (phospho Thr789) Polyclonal Antibody

Catalog No	BYab-16122
Isotype	IgG
Reactivity	Human;Mouse;Rat
Applications	IHC;IF;ELISA
Gene Name	ARHGAP31
Protein Name	Rho GTPase-activating protein 31
Immunogen	Synthesized phospho-peptide around the phosphorylation site of human CdGAP (phospho Thr789)
Specificity	Phospho-CdGAP (T789) Polyclonal Antibody detects endogenous levels of CdGAP protein only when phosphorylated at T789.
Formulation	Liquid in PBS containing 50% glycerol, 0.5% BSA and 0.02% sodium azide.
Source	Polyclonal, Rabbit,IgG
Purification	The antibody was affinity-purified from rabbit antiserum by affinity-chromatography using epitope-specific immunogen.
Dilution	IHC: 1/100 - 1/300. ELISA: 1/40000.. IF 1:50-200
Concentration	1 mg/ml
Purity	≥90%
Storage Stability	-20°C/1 year
Synonyms	ARHGAP31; CDGAP; KIAA1204; Rho GTPase-activating protein 31; Cdc42 GTPase-activating protein
Observed Band	
Cell Pathway	cytosol,focal adhesion,lamellipodium,
Tissue Specificity	Brain,
Function	developmental stage:Mainly expressed in fetal heart and muscle.,function:Functions as a GTPase-activating protein (GAP) for RAC1 and CDC42. Required for cell spreading, polarized lamellipodia formation and cell migration.,PTM:Phosphorylation on Thr-789 reduces GAP activity.,similarity:Contains 1 Rho-GAP domain.,subunit:Interacts with ITSN1, which inhibits GAP activity. Interacts with PARVA.,
Background	This gene encodes a GTPase-activating protein (GAP). A variety of cellular processes are regulated by Rho GTPases which cycle between an inactive form bound to GDP and an active form bound to GTP. This cycling between inactive

Nanjing BYabscience technology Co.,Ltd



and active forms is regulated by guanine nucleotide exchange factors and GAPs. The encoded protein is a GAP shown to regulate two GTPases involved in protein trafficking and cell growth. [provided by RefSeq, Jul 2008],

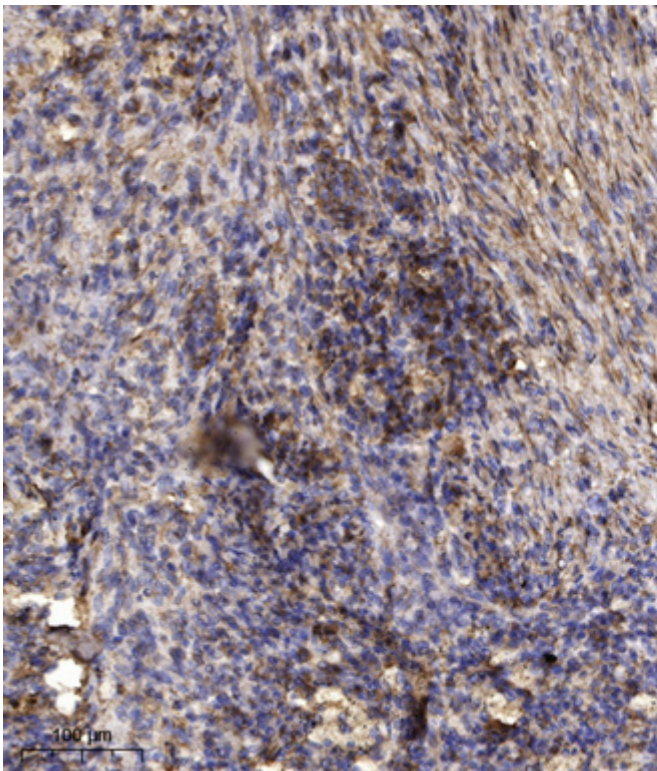
matters needing attention

Avoid repeated freezing and thawing!

Usage suggestions

This product can be used in immunological reaction related experiments. For more information, please consult technical personnel.

Products Images



Immunohistochemical analysis of paraffin-embedded human Squamous cell carcinoma of lung. 1, Antibody was diluted at 1:200(4° overnight). 2, Tris-EDTA,pH9.0 was used for antigen retrieval. 3,Secondary antibody was diluted at 1:200(room temperature, 45min).