



# GM-CSF Polyclonal Antibody

<b>Catalog No</b>	BYab-16090
<b>Isotype</b>	IgG
<b>Reactivity</b>	Human;Rat;Mouse;
<b>Applications</b>	IHC;IF;ELISA
<b>Gene Name</b>	CSF2 GMCSF
<b>Protein Name</b>	Granulocyte-macrophage colony-stimulating factor (GM-CSF) (Colony-stimulating factor) (CSF) (Molgramostin) (Sargramostim)
<b>Immunogen</b>	Synthetic peptide from human protein at AA range: 100-144
<b>Specificity</b>	The antibody detects endogenous GM-CSF
<b>Formulation</b>	Liquid in PBS containing 50% glycerol, 0.5% BSA and 0.02% sodium azide.
<b>Source</b>	Polyclonal, Rabbit,IgG
<b>Purification</b>	The antibody was affinity-purified from rabbit antiserum by affinity-chromatography using epitope-specific immunogen.
<b>Dilution</b>	IHC-p 1:50-200, ELISA 1:10000-20000. IF 1:50-200
<b>Concentration</b>	1 mg/ml
<b>Purity</b>	≥90%
<b>Storage Stability</b>	-20°C/1 year
<b>Synonyms</b>	Granulocyte-macrophage colony-stimulating factor (GM-CSF;Colony-stimulating factor;CSF;Molgramostin;Sargramostim)
<b>Observed Band</b>	
<b>Cell Pathway</b>	Secreted .
<b>Tissue Specificity</b>	Peripheral blood,
<b>Function</b>	function:Cytokine that stimulates the growth and differentiation of hematopoietic precursor cells from various lineages, including granulocytes, macrophages, eosinophils and erythrocytes.,online information:Clinical information on Leukine,pharmaceutical:Available under the names Leukine (Immunex) and Leucomax (Novartis). Used in myeloid reconstitution following bone marrow transplant, bone marrow transplant engraftment failure or delay, mobilization and following transplantation of autologous peripheral blood progenitor cells, and following induction chemotherapy in older adults with acute myelogenous leukemia.,polymorphism:Variant Ile-117 may be a risk factor for atopic asthma.,similarity:Belongs to the GM-CSF family.,subunit:Monomer.,

Nanjing BYabscience technology Co.,Ltd



---

**Background**

The protein encoded by this gene is a cytokine that controls the production, differentiation, and function of granulocytes and macrophages. The active form of the protein is found extracellularly as a homodimer. This gene has been localized to a cluster of related genes at chromosome region 5q31, which is known to be associated with interstitial deletions in the 5q- syndrome and acute myelogenous leukemia. Other genes in the cluster include those encoding interleukins 4, 5, and 13. [provided by RefSeq, Jul 2008],

---

**matters needing attention**

Avoid repeated freezing and thawing!

---

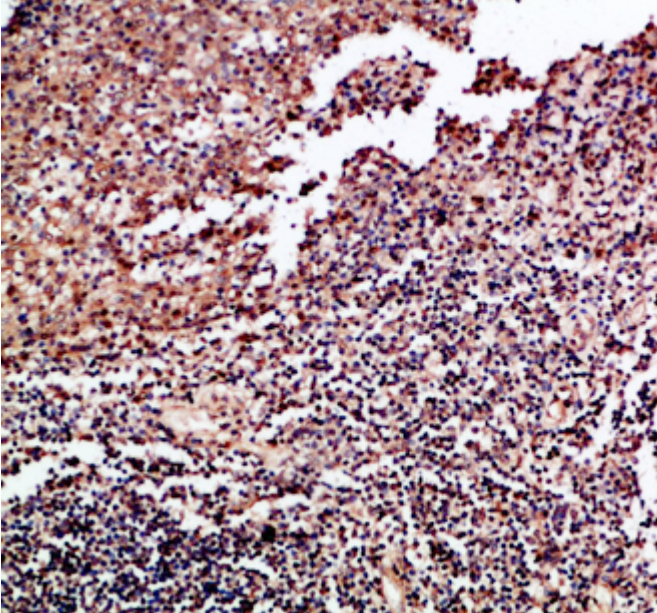
**Usage suggestions**

This product can be used in immunological reaction related experiments. For more information, please consult technical personnel.

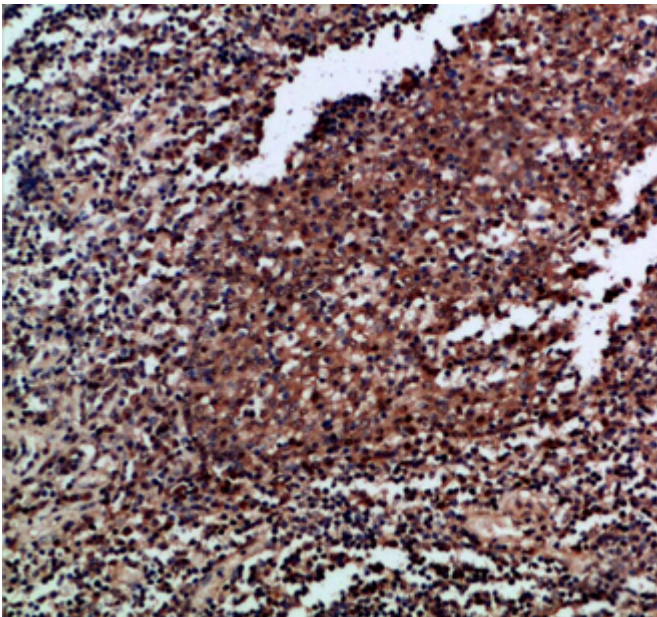
---



## Products Images



Immunohistochemical analysis of paraffin-embedded human-tonsil, antibody was diluted at 1:200



Immunohistochemical analysis of paraffin-embedded human-tonsil, antibody was diluted at 1:200