



TGFβ2 Polyclonal Antibody

Catalog No	BYab-16085
Isotype	IgG
Reactivity	Human;Mouse;Rat
Applications	WB;IHC;IF;ELISA
Gene Name	TGFB2
Protein Name	Transforming growth factor beta-2 (TGF-beta-2) (BSC-1 cell growth inhibitor) (Cetermin) (Glioblastoma-derived T-cell suppressor factor) (G-TSF) (Polyergin)
Immunogen	The antiserum was produced against synthesized peptide derived from human TGF beta2. AA range:361-410
Specificity	The antibody detects endogenous TGFβ2
Formulation	Liquid in PBS containing 50% glycerol, 0.5% BSA and 0.02% sodium azide.
Source	Polyclonal, Rabbit,IgG
Purification	The antibody was affinity-purified from rabbit antiserum by affinity-chromatography using epitope-specific immunogen.
Dilution	WB 1:500-2000,IHC-p 1:500-200, ELISA 1:10000-20000. IF 1:50-200
Concentration	1 mg/ml
Purity	≥90%
Storage Stability	-20°C/1 year
Synonyms	Transforming growth factor beta-2 (TGF-beta-2;BSC-1 cell growth inhibitor;Cetermin;Glioblastoma-derived T-cell suppressor factor;G-TSF;Polyergin)
Observed Band	47+12kD
Cell Pathway	[Latency-associated peptide]: Secreted, extracellular space, extracellular matrix . ; [Transforming growth factor beta-2]: Secreted .
Tissue Specificity	Aorta endothelial cell,Lung,
Function	disease:A chromosomal aberration involving TGFB2 is found in a family with Peters anomaly [MIM:604229]. Translocation t(1;7)(q41;p21) with HDAC9. Peters anomaly consists of a central corneal leukoma, absence of the posterior corneal stroma and Descemet membrane, and a variable degree of iris and lenticular attachments to the central aspect of the posterior cornea.,function:TGF-beta 2 has suppressive effects on interleukin-2 dependent T-cell growth.,online information:TGF beta-2 entry,similarity:Belongs to the TGF-beta family.,subunit:Homodimer; disulfide-linked.,

Nanjing BYabscience technology Co.,Ltd



Background

This gene encodes a secreted ligand of the TGF-beta (transforming growth factor-beta) superfamily of proteins. Ligands of this family bind various TGF-beta receptors leading to recruitment and activation of SMAD family transcription factors that regulate gene expression. The encoded preproprotein is proteolytically processed to generate a latency-associated peptide (LAP) and a mature peptide, and is found in either a latent form composed of a mature peptide homodimer, a LAP homodimer, and a latent TGF-beta binding protein, or in an active form consisting solely of the mature peptide homodimer. The mature peptide may also form heterodimers with other TGF-beta family members. Disruption of the TGF-beta/SMAD pathway has been implicated in a variety of human cancers. A chromosomal translocation that includes this gene is associated with Peters's anomaly, a congenital defect of the an

matters needing attention

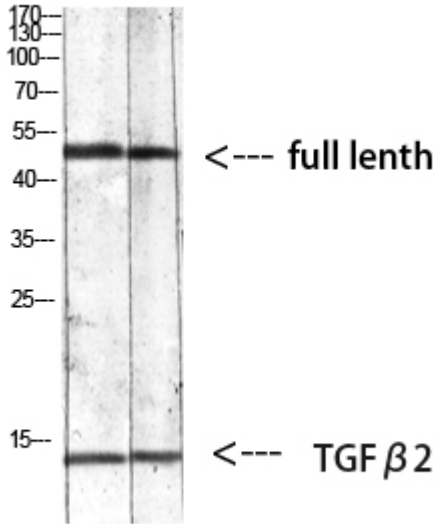
Avoid repeated freezing and thawing!

Usage suggestions

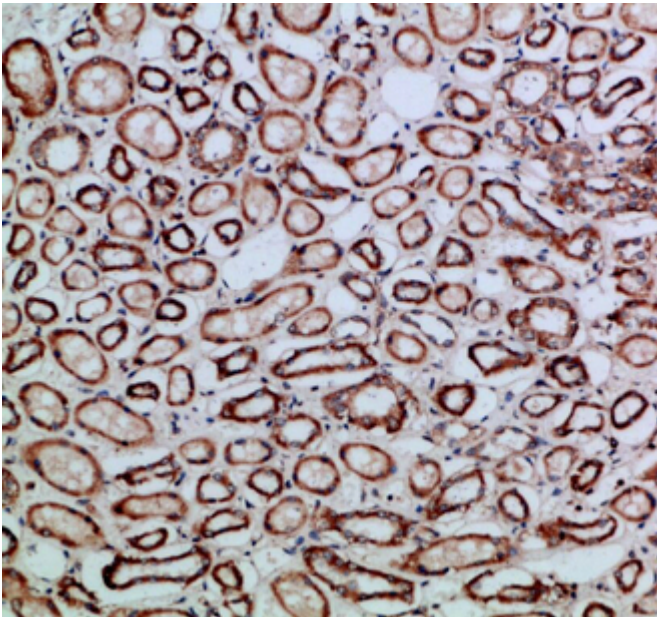
This product can be used in immunological reaction related experiments. For more information, please consult technical personnel.



Products Images



Western blot analysis of mouse-kidney 293T mouse-lung lysate, antibody was diluted at 1000. Secondary antibody(catalog#:RS0002) was diluted at 1:20000



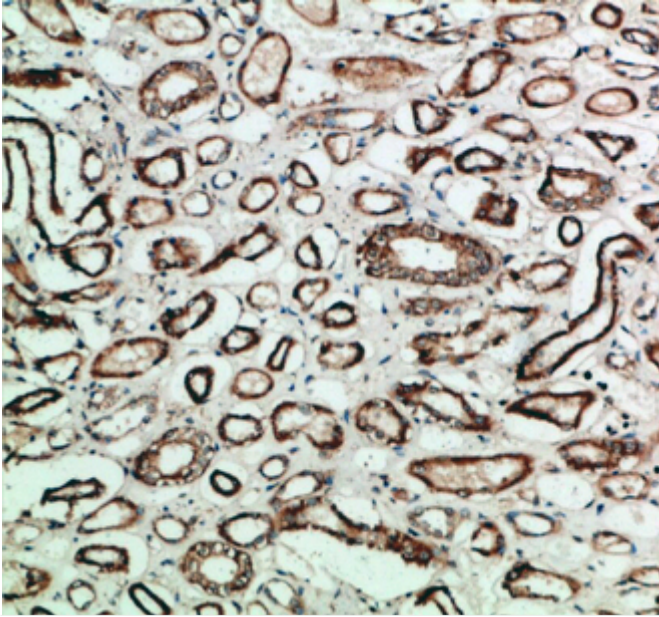
Immunohistochemical analysis of paraffin-embedded human-kidney, antibody was diluted at 1:200

Nanjing BYabscience technology Co.,Ltd

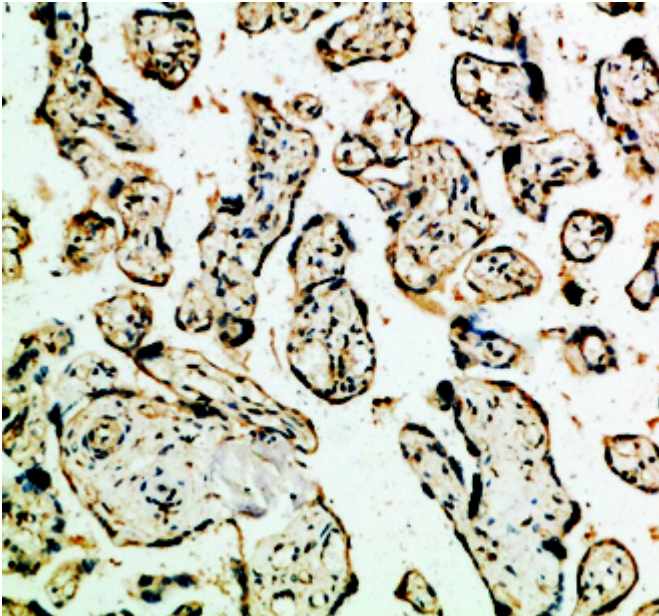
网址: www.njbybio.com

官方热线: 025-5229-8998

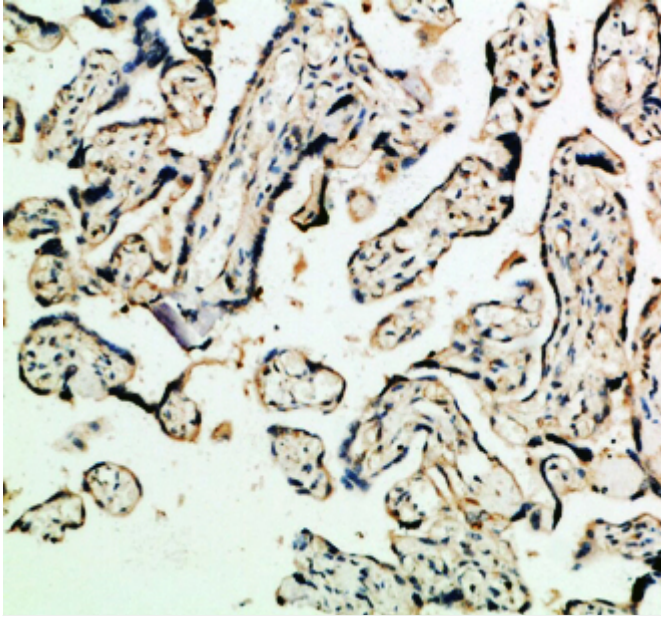
监督电话: 15950492658



Immunohistochemical analysis of paraffin-embedded human-kidney, antibody was diluted at 1:200



Immunohistochemical analysis of paraffin-embedded human-placenta, antibody was diluted at 1:200



Immunohistochemical analysis of paraffin-embedded human-placenta, antibody was diluted at 1:200