



C32 Polyclonal Antibody

Catalog No	BYab-16081
Isotype	IgG
Reactivity	Human;Rat;Mouse;
Applications	WB;ELISA
Gene Name	CKLF
Protein Name	Chemokine-like factor
Immunogen	Synthesized peptide derived from Chemokine-like factor at AA range: 103-152
Specificity	C32 Polyclonal Antibody detects endogenous levels of C32 protein.
Formulation	Liquid in PBS containing 50% glycerol, 0.5% BSA and 0.02% sodium azide.
Source	Polyclonal, Rabbit,IgG
Purification	The antibody was affinity-purified from rabbit antiserum by affinity-chromatography using epitope-specific immunogen.
Dilution	Western Blot: 1/500 - 1/2000. ELISA: 1/10000. Not yet tested in other applications.
Concentration	1 mg/ml
Purity	≥90%
Storage Stability	-20°C/1 year
Synonyms	CKLF; CKLF1; HSPC224; Chemokine-like factor; C32
Observed Band	20kD
Cell Pathway	[Isoform 1]: Secreted .; [Isoform 2]: Membrane ; Multi-pass membrane protein .; [Isoform 4]: Membrane ; Multi-pass membrane protein .
Tissue Specificity	Isoform 1, isoform 2, isoform 3 and isoform 4 have highest expression levels in adult spleen, lung, testis, ovary, peripheral blood leukocyte, placenta, pancreas, and in fetal brain, skeletal muscle, thymus and heart. Lower expression levels in adult skeletal muscle, liver, thymus colon, prostate and fetal spleen and liver.
Function	function:Isoform CKLF1 has chemotactic response in rat monocytes, neutrophils, and lymphocytes.,function:May play an important role in inflammation and regeneration of skeletal muscle. Partly inhibited by interleukin 10.,similarity:Belongs to the chemokine-like factor family.,similarity:Contains 1 MARVEL domain.,tissue specificity:All 4 isoforms have highest expression levels in adult spleen, lungs, testis, ovary, peripheral blood leucocyte, placenta, pancreas, and in fetal brain, skeletal muscle, thymus and heart. Lower expression levels in adult skeletal muscle, liver, thymus colon, prostate, and fetal spleen and liver.,

Nanjing BYabscience technology Co.,Ltd



Background

The product of this gene is a cytokine. Cytokines are small proteins that have an essential role in the immune and inflammatory responses. This gene is one of several chemokine-like factor genes located in a cluster on chromosome 16. The protein encoded by this gene is a potent chemoattractant for neutrophils, monocytes and lymphocytes. It also can stimulate the proliferation of skeletal muscle cells. This protein may play important roles in inflammation and in the regeneration of skeletal muscle. Alternatively spliced transcript variants encoding different isoforms have been identified. Naturally occurring read-through transcription occurs between this locus and the neighboring locus CMTM1 (CKLF-like MARVEL transmembrane domain containing 1).[provided by RefSeq, Feb 2011],

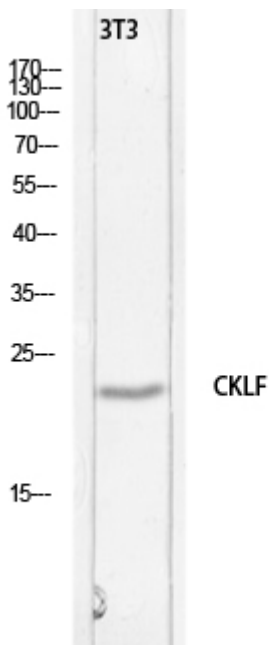
matters needing attention

Avoid repeated freezing and thawing!

Usage suggestions

This product can be used in immunological reaction related experiments. For more information, please consult technical personnel.

Products Images



Western blot analysis of 3T3 lysis using CKLF antibody. Secondary antibody(catalog#:RS0002) was diluted at 1:20000