



# V

## IL-22 Polyclonal Antibody

<b>Catalog No</b>	BYab-16075
<b>Isotype</b>	IgG
<b>Reactivity</b>	Human;Mouse;Rat
<b>Applications</b>	WB;ELISA
<b>Gene Name</b>	IL22
<b>Protein Name</b>	Interleukin-22
<b>Immunogen</b>	The antiserum was produced against synthesized peptide derived from the C-terminal region of human IL22. AA range:121-170
<b>Specificity</b>	IL-22 Polyclonal Antibody detects endogenous levels of IL-22 protein.
<b>Formulation</b>	Liquid in PBS containing 50% glycerol, 0.5% BSA and 0.02% sodium azide.
<b>Source</b>	Polyclonal, Rabbit,IgG
<b>Purification</b>	The antibody was affinity-purified from rabbit antiserum by affinity-chromatography using epitope-specific immunogen.
<b>Dilution</b>	Western Blot: 1/500 - 1/2000. ELISA: 1/10000. Not yet tested in other applications.
<b>Concentration</b>	1 mg/ml
<b>Purity</b>	≥90%
<b>Storage Stability</b>	-20°C/1 year
<b>Synonyms</b>	IL22; ILTIF; ZCYTO18; Interleukin-22; IL-22; Cytokine Zcyto18; IL-10-related T-cell-derived-inducible factor; IL-TIF
<b>Observed Band</b>	22kD
<b>Cell Pathway</b>	Secreted.
<b>Tissue Specificity</b>	Blood,PCR rescued clones,
<b>Function</b>	function:Cytokine that contributes to the inflammatory response in vivo.,similarity:Belongs to the IL-10 family.,
<b>Background</b>	function:Cytokine that contributes to the inflammatory response in vivo.,similarity:Belongs to the IL-10 family.,
<b>matters needing attention</b>	Avoid repeated freezing and thawing!

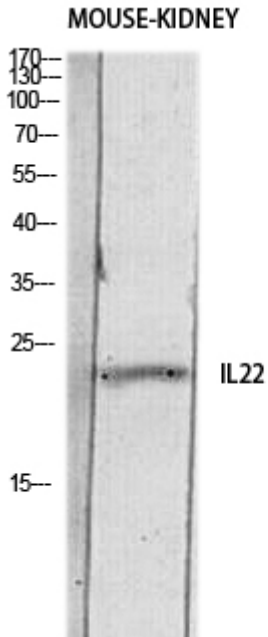
Nanjing BYabscience technology Co.,Ltd



### Usage suggestions

This product can be used in immunological reaction related experiments. For more information, please consult technical personnel.

## Products Images



Western blot analysis of MOUSE-KIDNEY lysis using IL22 antibody. Antibody was diluted at 1:500. Secondary antibody(catalog#:RS0002) was diluted at 1:20000