



# IL-1F5 Polyclonal Antibody

<b>Catalog No</b>	BYab-16073
<b>Isotype</b>	IgG
<b>Reactivity</b>	Human;Mouse;Rat
<b>Applications</b>	WB;ELISA
<b>Gene Name</b>	IL36RN
<b>Protein Name</b>	Interleukin-36 receptor antagonist protein
<b>Immunogen</b>	The antiserum was produced against synthesized peptide derived from the Internal region of human IL36RN. AA range:1-50
<b>Specificity</b>	IL-1F5 Polyclonal Antibody detects endogenous levels of IL-1F5 protein.
<b>Formulation</b>	Liquid in PBS containing 50% glycerol, 0.5% BSA and 0.02% sodium azide.
<b>Source</b>	Polyclonal, Rabbit,IgG
<b>Purification</b>	The antibody was affinity-purified from rabbit antiserum by affinity-chromatography using epitope-specific immunogen.
<b>Dilution</b>	Western Blot: 1/500 - 1/2000. ELISA: 1/10000. Not yet tested in other applications.
<b>Concentration</b>	1 mg/ml
<b>Purity</b>	≥90%
<b>Storage Stability</b>	-20°C/1 year
<b>Synonyms</b>	IL36RN; FIL1D; IL1F5; IL1HY1; IL1L1; IL1RP3; Interleukin-36 receptor antagonist protein; FIL1 delta; IL-1-related protein 3; IL-1RP3; Interleukin-1 HY1; IL-1HY1; Interleukin-1 delta; IL-1 delta; Interleukin-1 family member 5; IL-1F5; Interleukin-1 receptor antagonist homolog 1; IL-1ra homolog 1; Interleukin-1-like protein 1; IL-1L1
<b>Observed Band</b>	17kD
<b>Cell Pathway</b>	Cytoplasm . Secreted . The secretion is dependent on protein unfolding and facilitated by the cargo receptor TMED10; it results in protein translocation from the cytoplasm into the ERGIC (endoplasmic reticulum-Golgi intermediate compartment) followed by vesicle entry and secretion. .
<b>Tissue Specificity</b>	Predominantly expressed in skin keratinocytes but not in fibroblasts, endothelial cells or melanocytes. Detected also in the spleen, brain leukocyte and macrophage cell types. Increased in lesional psoriasis skin.
<b>Function</b>	function:Is a highly and a specific antagonist of the IL-1 receptor-related protein 2-mediated response to interleukin 1 family member 9 (IL1F9). Could constitute

Nanjing BYabscience technology Co.,Ltd



part of an independent signaling system analogous to interleukin-1 alpha (IL-1A), beta (IL-1B) receptor agonist and interleukin-1 receptor type I (IL-1R1), that is present in epithelial barriers and takes part in local inflammatory response.,induction:By phorbol ester (PMA) and lipopolysaccharide (LPS) treatment in macrophage cell line.,online information:Interleukin-1 entry,similarity:Belongs to the IL-1 family.,tissue specificity:Predominantly expressed in keratinocytes but not in fibroblasts, endothelial cells or melanocytes. Detected also in the spleen, brain leukocyte and macrophage cell types. Increased in lesional psoriasis skin.,

### Background

The protein encoded by this gene is a member of the interleukin 1 cytokine family. This cytokine was shown to specifically inhibit the activation of NF-kappaB induced by interleukin 1 family, member 6 (IL1F6). This gene and eight other interleukin 1 family genes form a cytokine gene cluster on chromosome 2. Two alternatively spliced transcript variants encoding the same protein have been reported. [provided by RefSeq, Jul 2008],

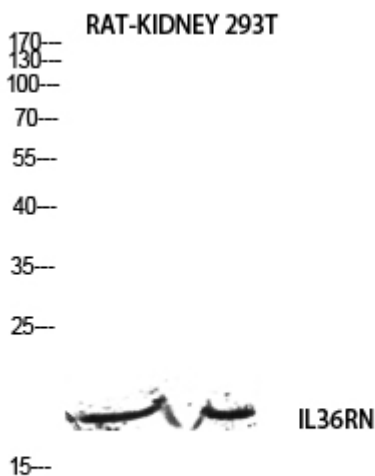
### matters needing attention

Avoid repeated freezing and thawing!

### Usage suggestions

This product can be used in immunological reaction related experiments. For more information, please consult technical personnel.

## Products Images



Western blot analysis of RAT-KIDNEY 293T lysis using IL36RN antibody. Antibody was diluted at 1:500. Secondary antibody(catalog#:RS0002) was diluted at 1:20000