



# EDA Polyclonal Antibody

<b>Catalog No</b>	BYab-16071
<b>Isotype</b>	IgG
<b>Reactivity</b>	Human;Mouse
<b>Applications</b>	WB;IHC;IF;ELISA
<b>Gene Name</b>	EDA
<b>Protein Name</b>	Ectodysplasin-A
<b>Immunogen</b>	The antiserum was produced against synthesized peptide derived from the Internal region of human EDA. AA range:120-170
<b>Specificity</b>	EDA Polyclonal Antibody detects endogenous levels of EDA protein.
<b>Formulation</b>	Liquid in PBS containing 50% glycerol, 0.5% BSA and 0.02% sodium azide.
<b>Source</b>	Polyclonal, Rabbit,IgG
<b>Purification</b>	The antibody was affinity-purified from rabbit antiserum by affinity-chromatography using epitope-specific immunogen.
<b>Dilution</b>	WB: 1/500 - 1/2000. IHC-p: 1:100-1:300. ELISA: 1/10000.. IF 1:50-200
<b>Concentration</b>	1 mg/ml
<b>Purity</b>	≥90%
<b>Storage Stability</b>	-20°C/1 year
<b>Synonyms</b>	EDA; ED1; EDA2; Ectodysplasin-A; Ectodermal dysplasia protein; EDA protein
<b>Observed Band</b>	42kD
<b>Cell Pathway</b>	Cell membrane ; Single-pass type II membrane protein .; [Ectodysplasin-A, secreted form]: Secreted .
<b>Tissue Specificity</b>	Not abundant; expressed in specific cell types of ectodermal (but not mesodermal) origin of keratinocytes, hair follicles, sweat glands. Also in adult heart, liver, muscle, pancreas, prostate, fetal liver, uterus, small intestine and umbilical chord.
<b>Function</b>	alternative products:Additional isoforms seem to exist,disease:Defects in EDA are a cause of hypodontia [MIM:300606]. Hypodontia is agenesis of two or more permanent teeth without associated systemic disorders. Hypodontia due to EDA defects is an X-linked recessive disorder. Affected individuals have normal hair, skin, and nails, but lack primary and permanent teeth.,disease:Defects in EDA are the cause of ectodermal dysplasia, type 1 (ED1) [MIM:305100]; also known as Christ-Siemens-Touraine syndrome or X-linked hypohidrotic ectodermal dysplasia (XLHED). Ectodermal dysplasia defines a heterogeneous group of disorders due to abnormal development of two or more ectodermal structures. ED1 is a disease

Nanjing BYabscience technology Co.,Ltd



characterized by sparse hair (atrachosis or hypotrichosis), abnormal or missing teeth and the inability to sweat due to the absence of sweat glands. ED1 is the most common form of over 150 cli

**Background**

The protein encoded by this gene is a type II membrane protein that can be cleaved by furin to produce a secreted form. The encoded protein, which belongs to the tumor necrosis factor family, acts as a homotrimer and may be involved in cell-cell signaling during the development of ectodermal organs. Defects in this gene are a cause of ectodermal dysplasia, anhidrotic, which is also known as X-linked hypohidrotic ectodermal dysplasia. Several transcript variants encoding many different isoforms have been found for this gene. [provided by RefSeq, Jul 2008],

**matters needing attention**

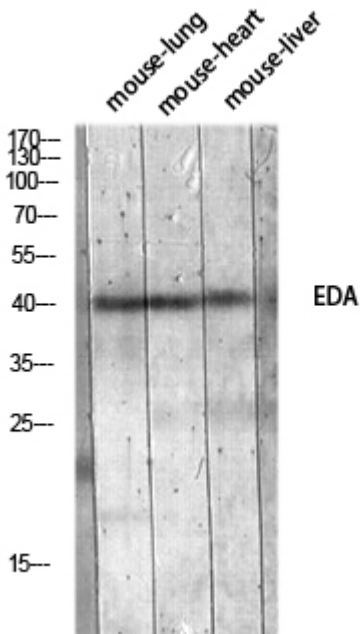
Avoid repeated freezing and thawing!

**Usage suggestions**

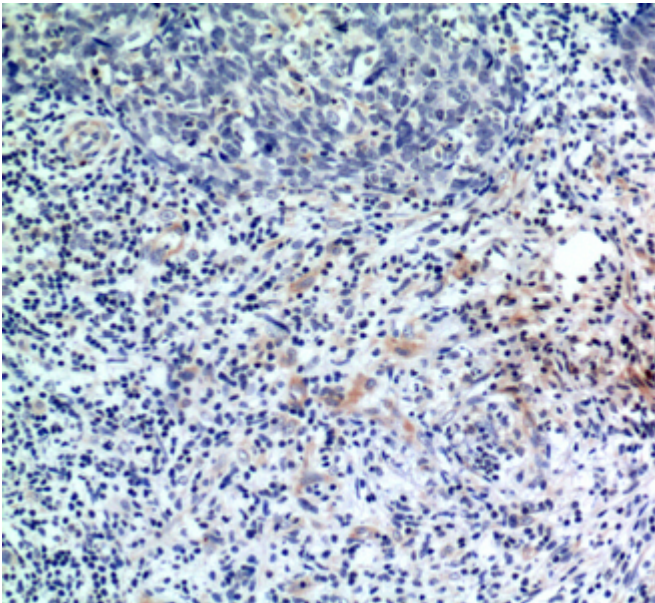
This product can be used in immunological reaction related experiments. For more information, please consult technical personnel.



## Products Images



Western blot analysis of mouse-lung mouse-heart mouse-liver lysis using EDA antibody. Antibody was diluted at 1:1000. Secondary antibody(catalog#:RS0002) was diluted at 1:20000



Immunohistochemical analysis of paraffin-embedded human-breast-cancer, antibody was diluted at 1:200