



# GDF-7 Polyclonal Antibody

<b>Catalog No</b>	BYab-16067
<b>Isotype</b>	IgG
<b>Reactivity</b>	Human;Mouse;Rat
<b>Applications</b>	WB;IHC;IF;ELISA
<b>Gene Name</b>	GDF7
<b>Protein Name</b>	Growth/differentiation factor 7
<b>Immunogen</b>	The antiserum was produced against synthesized peptide derived from the Internal region of human GDF7. AA range:321-370
<b>Specificity</b>	GDF-7 Polyclonal Antibody detects endogenous levels of GDF-7 protein.
<b>Formulation</b>	Liquid in PBS containing 50% glycerol, 0.5% BSA and 0.02% sodium azide.
<b>Source</b>	Polyclonal, Rabbit,IgG
<b>Purification</b>	The antibody was affinity-purified from rabbit antiserum by affinity-chromatography using epitope-specific immunogen.
<b>Dilution</b>	WB: 1/500 - 1/2000. IHC-p: 1:100-1:300. ELISA: 1/10000.. IF 1:50-200
<b>Concentration</b>	1 mg/ml
<b>Purity</b>	≥90%
<b>Storage Stability</b>	-20°C/1 year
<b>Synonyms</b>	GDF7; Growth/differentiation factor 7; GDF-7
<b>Observed Band</b>	47kD
<b>Cell Pathway</b>	Secreted .
<b>Tissue Specificity</b>	Testis,
<b>Function</b>	function:May play an active role in the motor area of the primate neocortex.,similarity:Belongs to the TGF-beta family.,subunit:Homodimer; disulfide-linked.,
<b>Background</b>	This gene encodes a secreted ligand of the TGF-beta (transforming growth factor-beta) superfamily of proteins. Ligands of this family bind various TGF-beta receptors leading to recruitment and activation of SMAD family transcription factors that regulate gene expression. The encoded preproprotein is proteolytically processed to generate each subunit of the disulfide-linked homodimer. This protein may play a role in the differentiation of tendon cells and spinal cord interneurons. A mutation in this gene may be associated with

Nanjing BYabscience technology Co.,Ltd



increased risk for Barrett's esophagus and esophageal adenocarcinoma. [provided by RefSeq, Sep 2016],

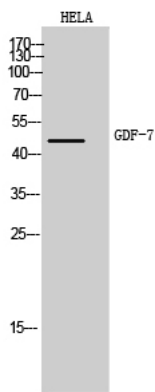
**matters needing attention**

Avoid repeated freezing and thawing!

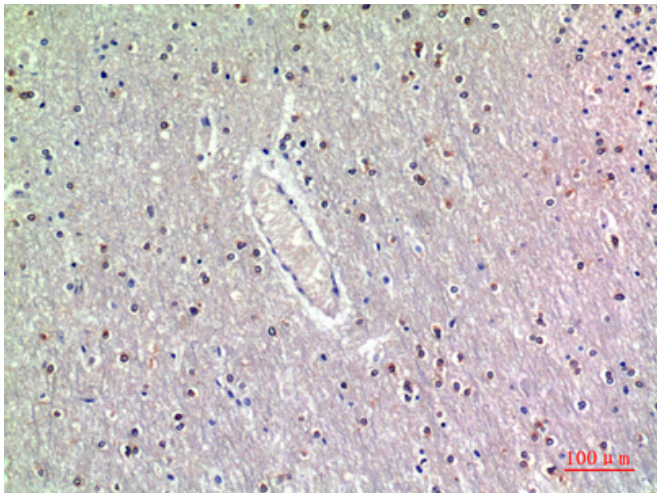
**Usage suggestions**

This product can be used in immunological reaction related experiments. For more information, please consult technical personnel.

## Products Images



Western Blot analysis of HeLa cells using GDF-7 Polyclonal Antibody. Antibody was diluted at 1:1000. Secondary antibody(catalog#:RS0002) was diluted at 1:20000



Immunohistochemical analysis of paraffin-embedded human-brain, antibody was diluted at 1:200

Nanjing BYabscience technology Co.,Ltd