



Lefty Polyclonal Antibody

Catalog No	BYab-16061
Isotype	IgG
Reactivity	Human;Mouse
Applications	WB;IHC
Gene Name	LEFTY1/LEFTY2
Protein Name	Left-right determination factor 1/Left-right determination factor 2
Immunogen	The antiserum was produced against synthesized peptide derived from the C-terminal region of human LEFTY1/LEFTY2. AA range:301-350
Specificity	Lefty Polyclonal Antibody detects endogenous levels of Lefty protein.
Formulation	Liquid in PBS containing 50% glycerol, 0.5% BSA and 0.02% sodium azide.
Source	Polyclonal, Rabbit,IgG
Purification	The antibody was affinity-purified from rabbit antiserum by affinity-chromatography using epitope-specific immunogen.
Dilution	WB 1:500-2000;IHC-p 1:50-300
Concentration	1 mg/ml
Purity	≥90%
Storage Stability	-20°C/1 year
Synonyms	LEFTY1; LEFTB; LEFTYB; Left-right determination factor 1; Left-right determination factor B; Protein lefty-1; Protein lefty-B; LEFTY2; EBAF; LEFTA; LEFTYA; TGFB4; PSEC0024; Left-right determination factor 2; Endometrial bleeding-associated factor; Left-right determination factor A; Protein lefty-2; Protein lefty-A; Transforming growth factor beta-4; TGF-beta-4
Observed Band	40kD
Cell Pathway	Secreted.
Tissue Specificity	Colon,Pancreas,Spleen,Teratocarcinoma,
Function	function:Required for left-right axis determination as a regulator of LEFTY2 and NODAL.,PTM:The processing of the protein may also occur at the second R-X-X-R site located at AA 132-135. Processing appears to be regulated in a cell-type specific manner.,similarity:Belongs to the TGF-beta family.,

Nanjing BYabscience technology Co.,Ltd



Background

This gene encodes a secreted ligand of the TGF-beta (transforming growth factor-beta) superfamily of proteins. Ligands of this family bind various TGF-beta receptors leading to recruitment and activation of SMAD family transcription factors that regulate gene expression. The encoded preproprotein is proteolytically processed to generate the mature protein, which plays a role in left-right asymmetry determination of organ systems during development. This gene is closely linked to both a related family member and a related pseudogene. [provided by RefSeq, Aug 2016],

matters needing attention

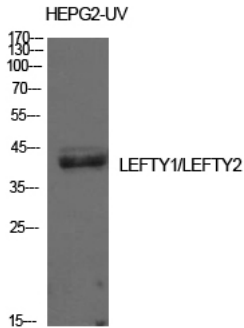
Avoid repeated freezing and thawing!

Usage suggestions

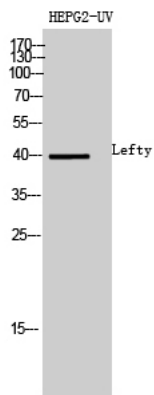
This product can be used in immunological reaction related experiments. For more information, please consult technical personnel.



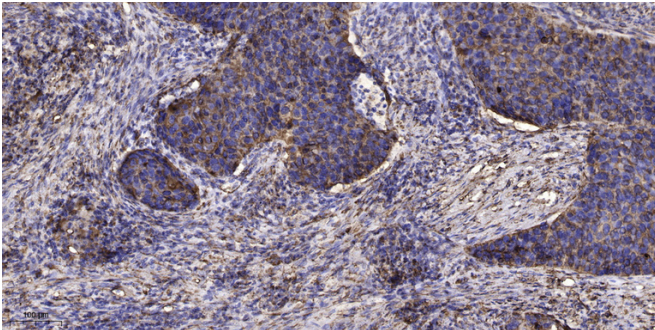
Products Images



Western Blot analysis of HepG2-UV cells using Lefty Polyclonal Antibody. Antibody was diluted at 1:500. Secondary antibody(catalog#:RS0002) was diluted at 1:20000



Western Blot analysis of HEPG2-UV cells using Lefty Polyclonal Antibody diluted at 1:500. Secondary antibody(catalog#:RS0002) was diluted at 1:20000



Immunohistochemical analysis of paraffin-embedded human Squamous cell carcinoma of lung. 1, Antibody was diluted at 1:200(4° overnight). 2, Tris-EDTA,pH9.0 was used for antigen retrieval. 3,Secondary antibody was diluted at 1:200(room temperature, 45min).