



Amphiregulin Polyclonal Antibody

Catalog No	BYab-16058
Isotype	IgG
Reactivity	Human;Rat;Mouse;
Applications	WB;ELISA
Gene Name	AREG/AREGB
Protein Name	Amphiregulin
Immunogen	The antiserum was produced against synthesized peptide derived from the Internal region of human AREG/AREGB. AA range:91-140
Specificity	Amphiregulin Polyclonal Antibody detects endogenous levels of Amphiregulin protein.
Formulation	Liquid in PBS containing 50% glycerol, 0.5% BSA and 0.02% sodium azide.
Source	Polyclonal, Rabbit,IgG
Purification	The antibody was affinity-purified from rabbit antiserum by affinity-chromatography using epitope-specific immunogen.
Dilution	Western Blot: 1/500 - 1/2000. ELISA: 1/10000. Not yet tested in other applications.
Concentration	1 mg/ml
Purity	≥90%
Storage Stability	-20°C/1 year
Synonyms	AREG; SDGF; AREGB; Amphiregulin; AR; Colorectum cell-derived growth factor; CRDGF
Observed Band	17kD
Cell Pathway	Membrane; Single-pass membrane protein.
Tissue Specificity	Brain,Pooled,
Function	function:Bifunctional growth-modulating glycoprotein. Inhibits growth of several human carcinoma cells in culture and stimulates proliferation of human fibroblasts and certain other tumor cells.,induction:By phorbol 12-myristate 13-acetate (PMA).,miscellaneous:AR is a protein containing cysteines in disulfide linkage(s) that are essential for its biological activity. AR may contain oligosaccharides and/or lipid moieties that are not obligatory for the biological activity.,similarity:Belongs to the amphiregulin family.,similarity:Contains 1 EGF-like domain.,subunit:The immature precursor interacts with CNIH.,

Nanjing BYabscience technology Co.,Ltd



Background

The protein encoded by this gene is a member of the epidermal growth factor family. It is an autocrine growth factor as well as a mitogen for astrocytes, Schwann cells and fibroblasts. It is related to epidermal growth factor (EGF) and transforming growth factor alpha (TGF-alpha). The protein interacts with the EGF/TGF-alpha receptor to promote the growth of normal epithelial cells, and it inhibits the growth of certain aggressive carcinoma cell lines. It also functions in mammary gland, oocyte and bone tissue development. This gene is associated with a psoriasis-like skin phenotype, and is also associated with other pathological disorders, including various types of cancers and inflammatory conditions. [provided by RefSeq, Apr 2014],

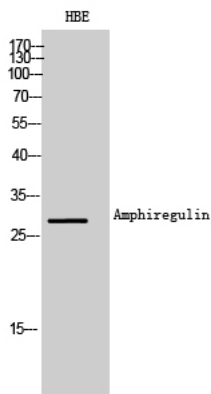
matters needing attention

Avoid repeated freezing and thawing!

Usage suggestions

This product can be used in immunological reaction related experiments. For more information, please consult technical personnel.

Products Images



Western Blot analysis of HBE cells using Amphiregulin Polyclonal Antibody. Secondary antibody(catalog#:RS0002) was diluted at 1:20000