



# HRP-3 Polyclonal Antibody

|                                  |  |
|----------------------------------|--|
| <b>Catalog No</b>                | BYab-16040   |
| <b>Isotype</b>                   | IgG  |
| <b>Reactivity</b>                | Human;Mouse;Rat  |
| <b>Applications</b>              | WB;IHC;IF;ELISA  |
| <b>Gene Name</b>                 | HDGFRP3  |
| <b>Protein Name</b>              | Hepatoma-derived growth factor-related protein 3   |
| <b>Immunogen</b>                 | The antiserum was produced against synthesized peptide derived from the Internal region of human HDGFRP3. AA range:131-180   |
| <b>Specificity</b>               | HRP-3 Polyclonal Antibody detects endogenous levels of HRP-3 protein.  |
| <b>Formulation</b>               | Liquid in PBS containing 50% glycerol, 0.5% BSA and 0.02% sodium azide.  |
| <b>Source</b>                    | Polyclonal, Rabbit,IgG   |
| <b>Purification</b>              | The antibody was affinity-purified from rabbit antiserum by affinity-chromatography using epitope-specific immunogen.  |
| <b>Dilution</b>                  | WB: 1/500 - 1/2000. IHC-p: 1/100-1/300. ELISA: 1/20000.. IF 1:50-200   |
| <b>Concentration</b>             | 1 mg/ml  |
| <b>Purity</b>                    | ≥90%   |
| <b>Storage Stability</b>         | -20°C/1 year   |
| <b>Synonyms</b>                  | HDGFRP3; HDGF2; CGI-142; Hepatoma-derived growth factor-related protein 3; HRP-3; Hepatoma-derived growth factor 2; HDGF-2   |
| <b>Observed Band</b>             | 23kD   |
| <b>Cell Pathway</b>              | Nucleus .  |
| <b>Tissue Specificity</b>        | Detected in testis, heart, spinal cord and brain.  |
| <b>Function</b>                  | function:Enhances DNA synthesis and may play a role in cell proliferation.,similarity:Belongs to the HDGF family.,similarity:Contains 1 PWWP domain.,tissue specificity:Detected in testis, heart, spinal cord and brain., |
| <b>Background</b>                | function:Enhances DNA synthesis and may play a role in cell proliferation.,similarity:Belongs to the HDGF family.,similarity:Contains 1 PWWP domain.,tissue specificity:Detected in testis, heart, spinal cord and brain., |
| <b>matters needing attention</b> | Avoid repeated freezing and thawing!   |

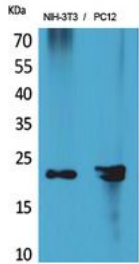
Nanjing BYabscience technology Co.,Ltd



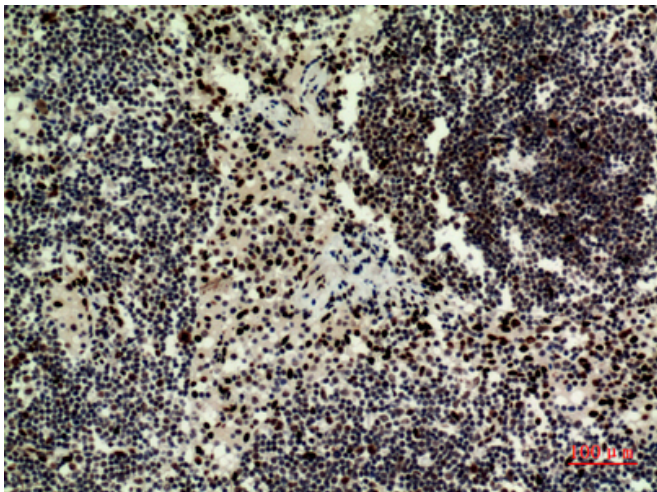
### Usage suggestions

This product can be used in immunological reaction related experiments. For more information, please consult technical personnel.

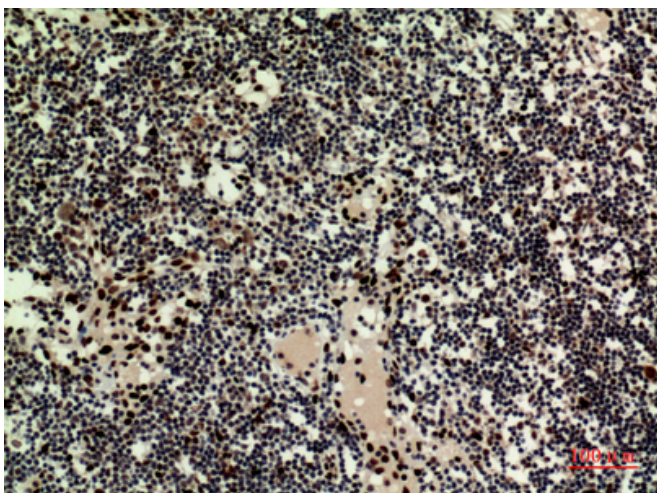
## Products Images



Western Blot analysis of NIH-3T3, PC12 cells using HRP-3 Polyclonal Antibody. Secondary antibody(catalog#:RS0002) was diluted at 1:20000



Immunohistochemical analysis of paraffin-embedded human-Lymph-nodes, antibody was diluted at 1:100



Immunohistochemical analysis of paraffin-embedded human-Lymph-nodes, antibody was diluted at 1:100

Nanjing BYabscience technology Co.,Ltd