



FGF-16 Polyclonal Antibody

Catalog No	BYab-16037
Isotype	IgG
Reactivity	Human;Mouse;Rat
Applications	WB;IHC;IF;ELISA
Gene Name	FGF16
Protein Name	Fibroblast growth factor 16
Immunogen	The antiserum was produced against synthesized peptide derived from the Internal region of human FGF16. AA range:141-190
Specificity	FGF-16 Polyclonal Antibody detects endogenous levels of FGF-16 protein.
Formulation	Liquid in PBS containing 50% glycerol, 0.5% BSA and 0.02% sodium azide.
Source	Polyclonal, Rabbit,IgG
Purification	The antibody was affinity-purified from rabbit antiserum by affinity-chromatography using epitope-specific immunogen.
Dilution	WB: 1/500 - 1/2000. IHC-p: 1/100-1/300. ELISA: 1/20000.. IF 1:50-200
Concentration	1 mg/ml
Purity	≥90%
Storage Stability	-20°C/1 year
Synonyms	FGF16; Fibroblast growth factor 16; FGF-16
Observed Band	24kD
Cell Pathway	Secreted .
Tissue Specificity	Heart,
Function	function:Induces hepatocellular proliferation. Has no biological effect on the heart.,similarity:Belongs to the heparin-binding growth factors family.,
Background	This gene encodes a member of a family of proteins that are involved in a variety of biological processes, including embryonic development, cell growth, morphogenesis, tissue repair, tumor growth and invasion. This gene is expressed in cardiac cells and is required for proper heart development. Mutation in this gene was also observed in individuals with metacarpal 4-5 fusion. [provided by RefSeq, Mar 2014],

Nanjing BYabscience technology Co.,Ltd



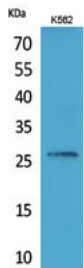
matters needing attention

Avoid repeated freezing and thawing!

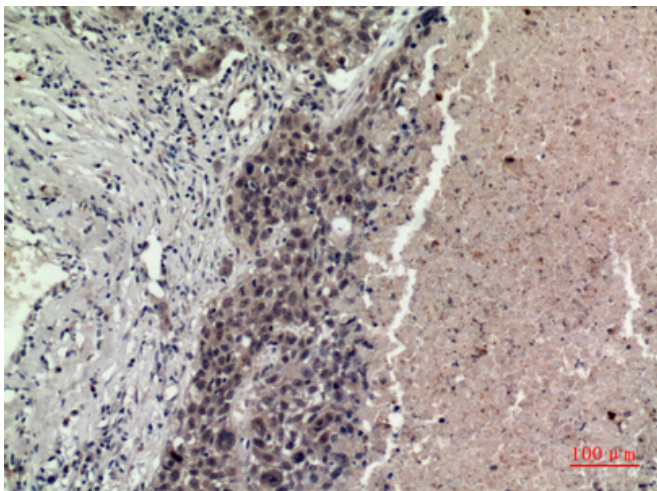
Usage suggestions

This product can be used in immunological reaction related experiments. For more information, please consult technical personnel.

Products Images



Western Blot analysis of K562 cells using FGF-16 Polyclonal Antibody. Secondary antibody(catalog#:RS0002) was diluted at 1:20000



Immunohistochemical analysis of paraffin-embedded human-lung, antibody was diluted at 1:100