



# IFN- $\omega$ Polyclonal Antibody

<b>Catalog No</b>	BYab-16035
<b>Isotype</b>	IgG
<b>Reactivity</b>	Human;Rat;Mouse;
<b>Applications</b>	WB;IHC;IF;ELISA
<b>Gene Name</b>	IFNW1
<b>Protein Name</b>	Interferon omega-1
<b>Immunogen</b>	The antiserum was produced against synthesized peptide derived from the C-terminal region of human IFNW1. AA range:146-195
<b>Specificity</b>	IFN- $\omega$ Polyclonal Antibody detects endogenous levels of IFN- $\omega$ protein.
<b>Formulation</b>	Liquid in PBS containing 50% glycerol, 0.5% BSA and 0.02% sodium azide.
<b>Source</b>	Polyclonal, Rabbit,IgG
<b>Purification</b>	The antibody was affinity-purified from rabbit antiserum by affinity-chromatography using epitope-specific immunogen.
<b>Dilution</b>	WB: 1/500 - 1/2000. IHC-p: 1/100-1/300. ELISA: 1/20000.. IF 1:50-200
<b>Concentration</b>	1 mg/ml
<b>Purity</b>	≥90%
<b>Storage Stability</b>	-20°C/1 year
<b>Synonyms</b>	IFNW1; Interferon omega-1; Interferon alpha-II-1
<b>Observed Band</b>	22kD
<b>Cell Pathway</b>	Secreted.
<b>Tissue Specificity</b>	Leukocyte,Liver,
<b>Function</b>	similarity:Belongs to the alpha/beta interferon family.,
<b>Background</b>	The protein encoded by this gene is an interferon and possesses antiviral activity. The encoded protein binds to the interferon alpha/beta receptor but not to the interferon gamma receptor. This intronless gene has several pseudogenes spread throughout the genome. [provided by RefSeq, Nov 2015],
<b>matters needing attention</b>	Avoid repeated freezing and thawing!

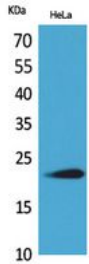
Nanjing BYabscience technology Co.,Ltd



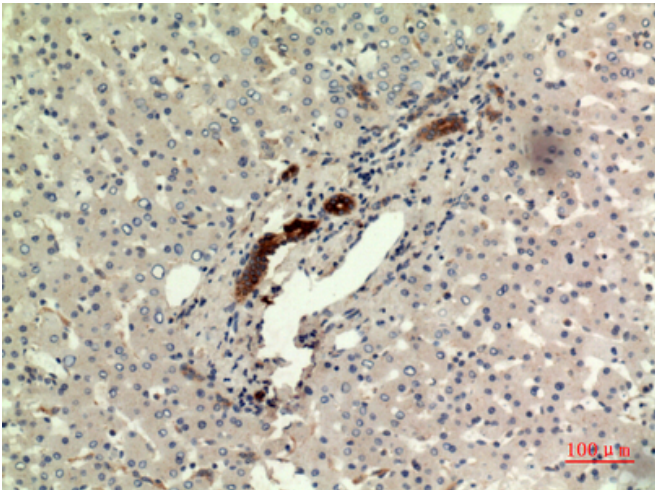
### Usage suggestions

This product can be used in immunological reaction related experiments. For more information, please consult technical personnel.

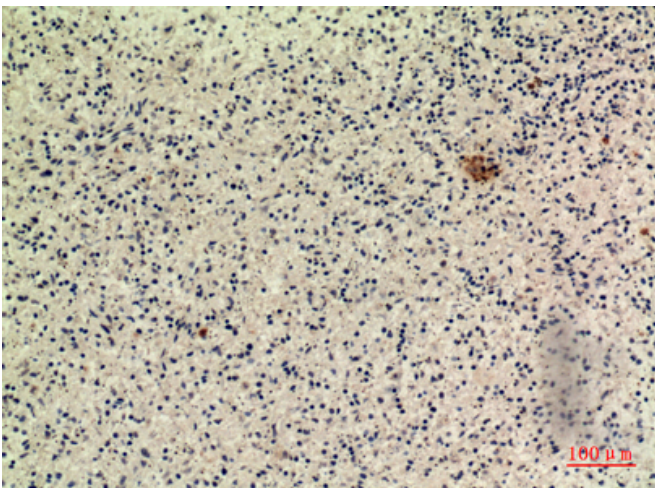
## Products Images



Western Blot analysis of HeLa cells using IFN- $\omega$  Polyclonal Antibody. Secondary antibody(catalog#:RS0002) was diluted at 1:20000

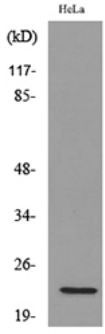


Immunohistochemical analysis of paraffin-embedded human-liver, antibody was diluted at 1:100



Immunohistochemical analysis of paraffin-embedded human-spleen, antibody was diluted at 1:100

Nanjing BYabscience technology Co.,Ltd



Western blot analysis of lysate from HeLa cells, using IFNW1 Antibody.