



PD-ECGF Polyclonal Antibody

Catalog No	BYab-16034
Isotype	IgG
Reactivity	Human;Rat;Mouse;
Applications	WB;IHC;IF;ELISA
Gene Name	TYMP
Protein Name	Thymidine phosphorylase
Immunogen	The antiserum was produced against synthesized peptide derived from the N-terminal region of human TYMP. AA range:11-60
Specificity	PD-ECGF Polyclonal Antibody detects endogenous levels of PD-ECGF protein.
Formulation	Liquid in PBS containing 50% glycerol, 0.5% BSA and 0.02% sodium azide.
Source	Polyclonal, Rabbit,IgG
Purification	The antibody was affinity-purified from rabbit antiserum by affinity-chromatography using epitope-specific immunogen.
Dilution	WB: 1/500 - 1/2000. IHC-p: 1/100-1/300. ELISA: 1/20000.. IF 1:50-200
Concentration	1 mg/ml
Purity	≥90%
Storage Stability	-20°C/1 year
Synonyms	TYMP; ECGF1; Thymidine phosphorylase; TP; Gliostatin; Platelet-derived endothelial cell growth factor; PD-ECGF; TdRPase
Observed Band	50kD
Cell Pathway	cytosol,
Tissue Specificity	Brain,Lung,Placenta,Synovial membrane tissue,
Function	catalytic activity:Thymidine + phosphate = thymine + 2-deoxy-alpha-D-ribose 1-phosphate.,disease:Defects in TYMP are the cause of mitochondrial neurogastrointestinal encephalomyopathy (MNGIE) [MIM:603041]; also known as myoneurogastrointestinal encephalomyopathy. MNGIE is an autosomal recessive disease associated with multiple deletions of skeletal muscle mitochondrial DNA (MtDNA). It is clinically characterized by onset between the second and fifth decades of life, ptosis, progressive external ophthalmoplegia, gastrointestinal dysmotility (often pseudoobstruction), diffuse leukoencephalopathy, thin body habitus, peripheral neuropathy, and myopathy.,function:Catalyzes the reversible phosphorolysis of thymidine. The produced molecules are then utilized as carbon

Nanjing BYabscience technology Co.,Ltd



and energy sources or in the rescue of pyrimidine bases for nucleotide synthesis.,function:May have a role in maintaining the in

Background

This gene encodes an angiogenic factor which promotes angiogenesis in vivo and stimulates the in vitro growth of a variety of endothelial cells. It has a highly restricted target cell specificity acting only on endothelial cells. Mutations in this gene have been associated with mitochondrial neurogastrointestinal encephalomyopathy. Multiple alternatively spliced transcript variants have been identified. [provided by RefSeq, Apr 2012],

matters needing attention

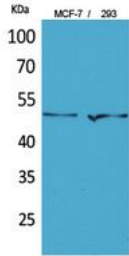
Avoid repeated freezing and thawing!

Usage suggestions

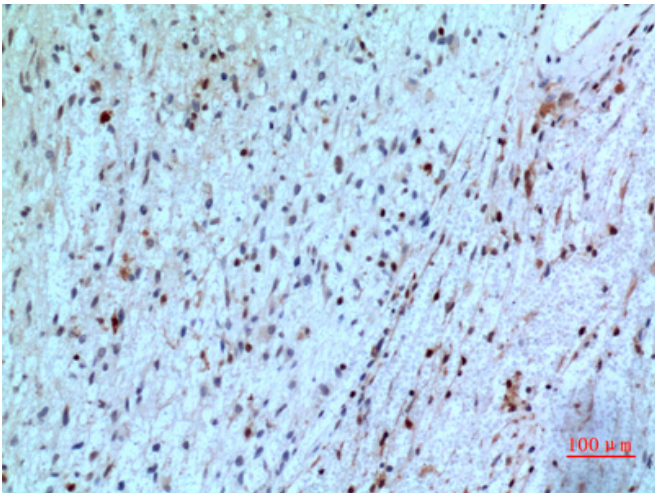
This product can be used in immunological reaction related experiments. For more information, please consult technical personnel.



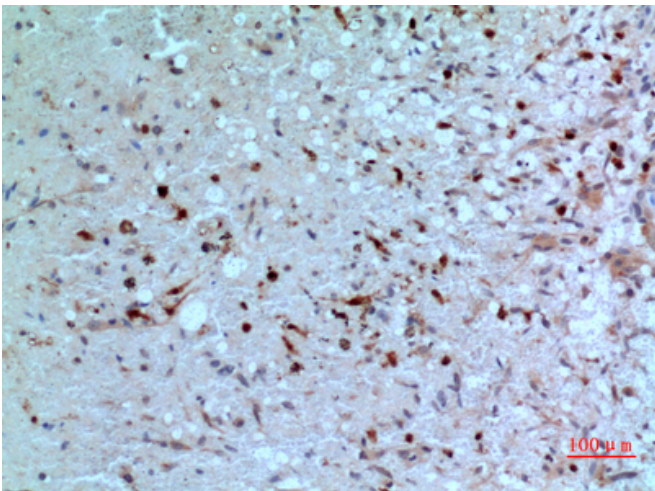
Products Images



Western Blot analysis of MCF-7, 293 cells using PD-ECGF Polyclonal Antibody. Secondary antibody(catalog#:RS0002) was diluted at 1:20000



Immunohistochemical analysis of paraffin-embedded human-brain, antibody was diluted at 1:100



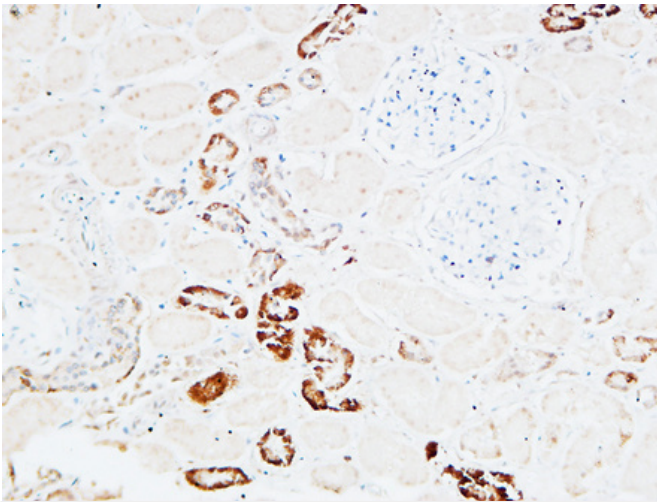
Immunohistochemical analysis of paraffin-embedded human-brain, antibody was diluted at 1:100

Nanjing BYabscience technology Co.,Ltd

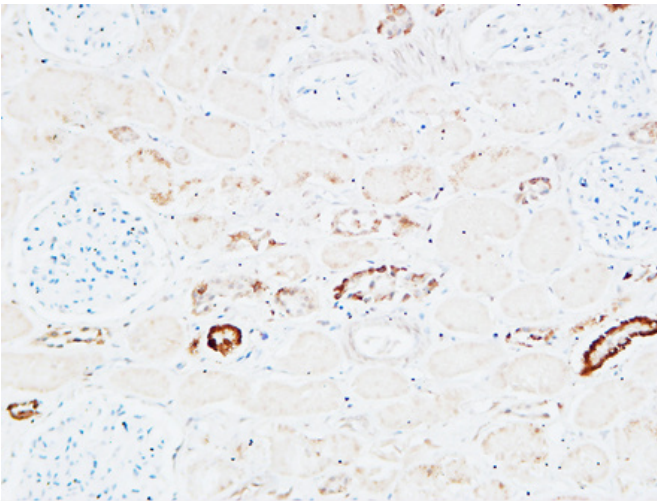
网址: www.njbybio.com

官方热线: 025-5229-8998

监督电话: 15950492658



Immunohistochemical analysis of paraffin-embedded Human kidney. 1, Antibody was diluted at 1:200(4° overnight). 2, High-pressure and temperature EDTA, pH8.0 was used for antigen retrieval. 3, Secondary antibody was diluted at 1:200(room temperature, 30min).



Immunohistochemical analysis of paraffin-embedded Human kidney. 1, Antibody was diluted at 1:200(4° overnight). 2, High-pressure and temperature EDTA, pH8.0 was used for antigen retrieval. 3, Secondary antibody was diluted at 1:200(room temperature, 30min).

