



# Osteoglycin Polyclonal Antibody

<b>Catalog No</b>	BYab-16011
<b>Isotype</b>	IgG
<b>Reactivity</b>	Human;Mouse
<b>Applications</b>	WB;ELISA
<b>Gene Name</b>	OGN
<b>Protein Name</b>	Mimecan
<b>Immunogen</b>	The antiserum was produced against synthesized peptide derived from the C-terminal region of human OGN. AA range:231-280
<b>Specificity</b>	Osteoglycin Polyclonal Antibody detects endogenous levels of Osteoglycin protein.
<b>Formulation</b>	Liquid in PBS containing 50% glycerol, 0.5% BSA and 0.02% sodium azide.
<b>Source</b>	Polyclonal, Rabbit,IgG
<b>Purification</b>	The antibody was affinity-purified from rabbit antiserum by affinity-chromatography using epitope-specific immunogen.
<b>Dilution</b>	Western Blot: 1/500 - 1/2000. ELISA: 1/20000. Not yet tested in other applications.
<b>Concentration</b>	1 mg/ml
<b>Purity</b>	≥90%
<b>Storage Stability</b>	-20°C/1 year
<b>Synonyms</b>	OGN; OIF; SLRR3A; Mimecan; Osteoglycin; Osteoinductive factor; OIF
<b>Observed Band</b>	35kD
<b>Cell Pathway</b>	Secreted, extracellular space, extracellular matrix .
<b>Tissue Specificity</b>	Bone.
<b>Function</b>	function:Induces bone formation in conjunction with TGF-beta-1 or TGF-beta-2.,similarity:Belongs to the small leucine-rich proteoglycan (SLRP) family. Class III subfamily.,similarity:Contains 7 LRR (leucine-rich) repeats.,tissue specificity:Bone.,
<b>Background</b>	This gene encodes a member of the small leucine-rich proteoglycan (SLRP) family of proteins. The encoded protein induces ectopic bone formation in conjunction with transforming growth factor beta and may regulate osteoblast differentiation. High expression of the encoded protein may be associated with elevated heart left ventricular mass. Alternative splicing results in multiple transcript variants. [provided by RefSeq, Jan 2016],

Nanjing BYabscience technology Co.,Ltd



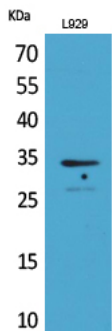
**matters needing attention**

Avoid repeated freezing and thawing!

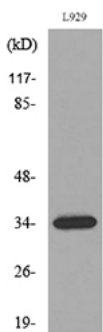
**Usage suggestions**

This product can be used in immunological reaction related experiments. For more information, please consult technical personnel.

## Products Images



Western Blot analysis of L929 cells using Osteoglycin Polyclonal Antibody. Secondary antibody(catalog#:RS0002) was diluted at 1:20000



Western blot analysis of lysate from L929 cells, using OGN Antibody.

Nanjing BYabscience technology Co.,Ltd