



# Angptl1/2 Polyclonal Antibody

<b>Catalog No</b>	BYab-16002
<b>Isotype</b>	IgG
<b>Reactivity</b>	Human;Mouse;Rat
<b>Applications</b>	WB;ELISA
<b>Gene Name</b>	ANGPTL1/ANGPTL2
<b>Protein Name</b>	Angiopoietin-related protein 1/Angiopoietin-related protein 2
<b>Immunogen</b>	The antiserum was produced against synthesized peptide derived from the Internal region of human ANGPTL1/2. AA range:91-140
<b>Specificity</b>	Angptl1/2 Polyclonal Antibody detects endogenous levels of Angptl1/2 protein.
<b>Formulation</b>	Liquid in PBS containing 50% glycerol, 0.5% BSA and 0.02% sodium azide.
<b>Source</b>	Polyclonal, Rabbit,IgG
<b>Purification</b>	The antibody was affinity-purified from rabbit antiserum by affinity-chromatography using epitope-specific immunogen.
<b>Dilution</b>	Western Blot: 1/500 - 1/2000. ELISA: 1/20000. Not yet tested in other applications.
<b>Concentration</b>	1 mg/ml
<b>Purity</b>	≥90%
<b>Storage Stability</b>	-20°C/1 year
<b>Synonyms</b>	ANGPTL1; ANG3; ANGPT3; ARP1; PSEC0154; Angiopoietin-related protein 1; Angiopoietin-3; ANG-3; Angiopoietin-like protein 1; ANGPTL2; ARP2; Angiopoietin-related protein 2; Angiopoietin-like protein 2
<b>Observed Band</b>	60kD
<b>Cell Pathway</b>	Secreted .
<b>Tissue Specificity</b>	Highly expressed in adrenal gland, placenta, thyroid gland, heart, skeletal muscle and small intestine. Weakly expressed in testis, ovary, colon, pancreas, kidney and stomach.
<b>Function</b>	similarity:Contains 1 fibrinogen C-terminal domain.,tissue specificity:Highly expressed in adrenal gland, placenta, thyroid gland, heart, skeletal muscle and small intestine. Weakly expressed in testis, ovary, colon, pancreas, kidney and stomach.,
<b>Background</b>	Angiopoietins are members of the vascular endothelial growth factor family and the only known growth factors largely specific for vascular endothelium. Angiopoietin-1, angiopoietin-2, and angiopoietin-4 participate in the formation of

**Nanjing BYabscience technology Co.,Ltd**



blood vessels. The protein encoded by this gene is another member of the angiopoietin family that is widely expressed in adult tissues with mRNA levels highest in highly vascularized tissues. This protein was found to be a secretory protein that does not act as an endothelial cell mitogen in vitro. [provided by RefSeq, Jul 2008],

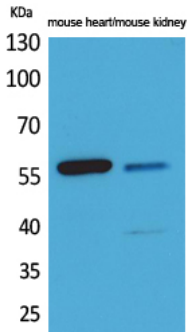
**matters needing attention**

Avoid repeated freezing and thawing!

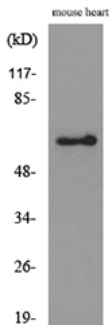
**Usage suggestions**

This product can be used in immunological reaction related experiments. For more information, please consult technical personnel.

## Products Images



Western Blot analysis of mouse heart, mouse kidney cells using Angptl1/2 Polyclonal Antibody. Secondary antibody(catalog#:RS0002) was diluted at 1:20000



Western blot analysis of lysate from mouse heart cells, using ANGPTL1/2 Antibody.