



# IFN- $\alpha$ 1 Polyclonal Antibody

<b>Catalog No</b>	BYab-15995
<b>Isotype</b>	IgG
<b>Reactivity</b>	Human;Rat;Mouse;
<b>Applications</b>	WB;ELISA
<b>Gene Name</b>	IFNA1/IFNA13
<b>Protein Name</b>	Interferon alpha-1/13
<b>Immunogen</b>	The antiserum was produced against synthesized peptide derived from the C-terminal region of human IFNA1/13. AA range:140-189
<b>Specificity</b>	IFN- $\alpha$ 1 Polyclonal Antibody detects endogenous levels of IFN- $\alpha$ 1 protein.
<b>Formulation</b>	Liquid in PBS containing 50% glycerol, 0.5% BSA and 0.02% sodium azide.
<b>Source</b>	Polyclonal, Rabbit,IgG
<b>Purification</b>	The antibody was affinity-purified from rabbit antiserum by affinity-chromatography using epitope-specific immunogen.
<b>Dilution</b>	Western Blot: 1/500 - 1/2000. ELISA: 1/20000. Not yet tested in other applications.
<b>Concentration</b>	1 mg/ml
<b>Purity</b>	$\geq 90\%$
<b>Storage Stability</b>	-20°C/1 year
<b>Synonyms</b>	IFNA1; IFNA13; Interferon alpha-1/13; IFN-alpha-1/13; Interferon alpha-D; LeIF D
<b>Observed Band</b>	22kD
<b>Cell Pathway</b>	Secreted.
<b>Tissue Specificity</b>	Cerebellum,Leukocyte,
<b>Function</b>	function:Produced by macrophages, IFN-alpha have antiviral activities. Interferon stimulates the production of two enzymes: a protein kinase and an oligoadenylate synthetase.,miscellaneous:Interferons alpha-1 and alpha-13 have identical protein sequences.,polymorphism:Two forms exist; alpha-1a (shown here) and alpha-1b.,similarity:Belongs to the alpha/beta interferon family.,
<b>Background</b>	The protein encoded by this gene is produced by macrophages and has antiviral activity. This gene is intronless and the encoded protein is secreted. [provided by RefSeq, Sep 2011],

Nanjing BYabscience technology Co.,Ltd



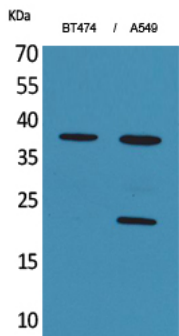
**matters needing attention**

Avoid repeated freezing and thawing!

**Usage suggestions**

This product can be used in immunological reaction related experiments. For more information, please consult technical personnel.

## Products Images



Western Blot analysis of BT474, A549 cells using IFN- $\alpha$  1 Polyclonal Antibody. Secondary antibody(catalog#:RS0002) was diluted at 1:20000