



Sg III Polyclonal Antibody

Catalog No	BYab-15987
Isotype	IgG
Reactivity	Human;Rat
Applications	WB;IHC;IF;ELISA
Gene Name	SCG3
Protein Name	Secretogranin-3
Immunogen	The antiserum was produced against synthesized peptide derived from the N-terminal region of human SCG3. AA range:21-70
Specificity	Sg III Polyclonal Antibody detects endogenous levels of Sg III protein.
Formulation	Liquid in PBS containing 50% glycerol, 0.5% BSA and 0.02% sodium azide.
Source	Polyclonal, Rabbit,IgG
Purification	The antibody was affinity-purified from rabbit antiserum by affinity-chromatography using epitope-specific immunogen.
Dilution	WB: 1/500 - 1/2000. IHC-p: 1:100-300 ELISA: 1/20000.. IF 1:50-200
Concentration	1 mg/ml
Purity	≥90%
Storage Stability	-20°C/1 year
Synonyms	SCG3; Secretogranin-3; Secretogranin III; SgIII
Observed Band	53kD
Cell Pathway	Cytoplasmic vesicle, secretory vesicle . Cytoplasmic vesicle, secretory vesicle membrane ; Peripheral membrane protein . Secreted . Associated with the secretory granule membrane through direct binding to cholesterol-enriched lipid rafts. .
Tissue Specificity	Expressed in brain, heart, kidney, liver and skeletal muscle.
Function	subcellular location:Neuroendocrine and endocrine secretory granules.,tissue specificity:Expressed in brain, heart, kidney, liver and skeletal muscle.,
Background	secretogranin III(SCG3) Homo sapiens The protein encoded by this gene is a member of the chromogranin/secretogranin family of neuroendocrine secretory proteins. Granins may serve as precursors for biologically active peptides. Some granins have been shown to function as helper proteins in sorting and proteolytic processing of prohormones; however, the function of this protein is unknown. Two transcript variants encoding different isoforms have been found for this gene.

Nanjing BYabscience technology Co.,Ltd



[provided by RefSeq, Sep 2009],

matters needing attention

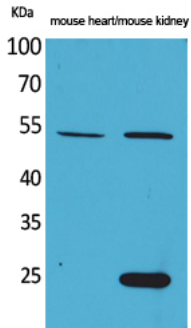
Avoid repeated freezing and thawing!

Usage suggestions

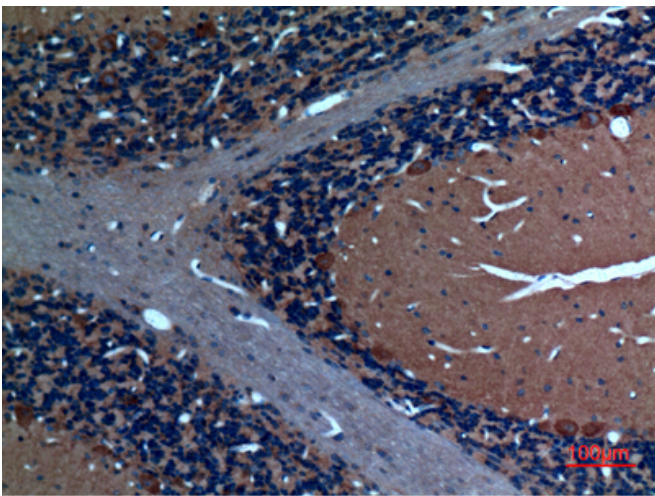
This product can be used in immunological reaction related experiments. For more information, please consult technical personnel.



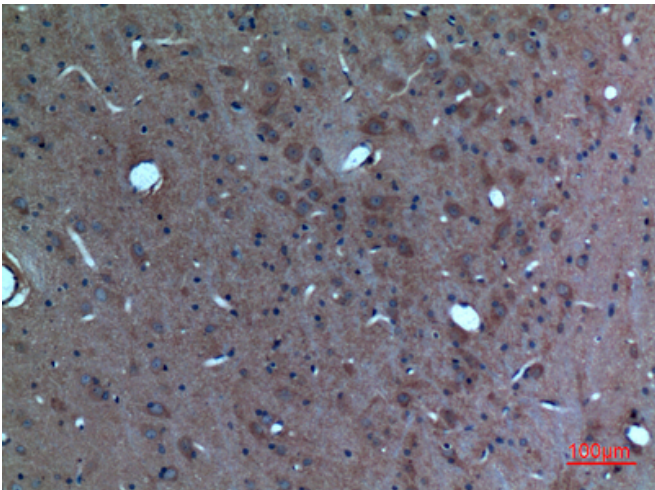
Products Images



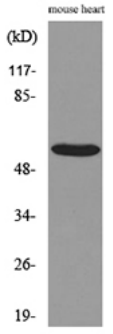
Western Blot analysis of mouse heart, mouse kidney cells using Sg III Polyclonal Antibody. Secondary antibody(catalog#:RS0002) was diluted at 1:20000



Immunohistochemical analysis of paraffin-embedded rat-brain, antibody was diluted at 1:100



Immunohistochemical analysis of paraffin-embedded rat-brain, antibody was diluted at 1:100



Western blot analysis of lysate from mouse heart cells, using SCG3 Antibody.