



# TSG-6 Polyclonal Antibody

|                           |   |
|---------------------------|---|
| <b>Catalog No</b>         | BYab-15975  |
| <b>Isotype</b>            | IgG   |
| <b>Reactivity</b>         | Human;Mouse   |
| <b>Applications</b>       | WB;IHC;IF;ELISA   |
| <b>Gene Name</b>          | TNFAIP6   |
| <b>Protein Name</b>       | Tumor necrosis factor-inducible gene 6 protein  |
| <b>Immunogen</b>          | The antiserum was produced against synthesized peptide derived from human TSG6. AA range:21-70  |
| <b>Specificity</b>        | TSG-6 Polyclonal Antibody detects endogenous levels of TSG-6 protein.   |
| <b>Formulation</b>        | Liquid in PBS containing 50% glycerol, 0.5% BSA and 0.02% sodium azide.   |
| <b>Source</b>             | Polyclonal, Rabbit,IgG  |
| <b>Purification</b>       | The antibody was affinity-purified from rabbit antiserum by affinity-chromatography using epitope-specific immunogen.   |
| <b>Dilution</b>           | Western Blot: 1/500 - 1/2000. Immunohistochemistry: 1/100 - 1/300. Immunofluorescence: 1/200 - 1/1000. ELISA: 1/5000. Not yet tested in other applications.   |
| <b>Concentration</b>      | 1 mg/ml   |
| <b>Purity</b>             | ≥90%  |
| <b>Storage Stability</b>  | -20°C/1 year  |
| <b>Synonyms</b>           | TNFAIP6; TSG6; Tumor necrosis factor-inducible gene 6 protein; Hyaluronate-binding protein; TNF-stimulated gene 6 protein; TSG-6; Tumor necrosis factor alpha-induced protein 6; TNF alpha-induced protein 6  |
| <b>Observed Band</b>      | 31kD  |
| <b>Cell Pathway</b>       | Secreted .  |
| <b>Tissue Specificity</b> | Expressed in airway epithelium and submucosal gland (at protein level). Colocalizes with bikunin at the ciliary border. Present in bronchoalveolar lavage fluid (at protein level) (PubMed:16873769). Expressed in mesenchymal stem cells (PubMed:16771708). Found in the synovial fluid of patients with rheumatoid arthritis. |
| <b>Function</b>           | function:Possibly involved in cell-cell and cell-matrix interactions during inflammation and tumorigenesis.,induction:By TNF.,similarity:Contains 1 CUB domain.,similarity:Contains 1 Link domain.,subunit:Interacts with inter-alpha-inhibitor (I-alpha-I). Chondroitin sulfate may be required for the                        |

Nanjing BYabscience technology Co.,Ltd



stability of the complex.,tissue specificity:Found in the synovial fluid of patients with rheumatoid arthritis.,

#### Background

The protein encoded by this gene is a secretory protein that contains a hyaluronan-binding domain, and thus is a member of the hyaluronan-binding protein family. The hyaluronan-binding domain is known to be involved in extracellular matrix stability and cell migration. This protein has been shown to form a stable complex with inter-alpha-inhibitor (I alpha I), and thus enhance the serine protease inhibitory activity of I alpha I, which is important in the protease network associated with inflammation. This gene can be induced by proinflammatory cytokines such as tumor necrosis factor alpha and interleukin-1. Enhanced levels of this protein are found in the synovial fluid of patients with osteoarthritis and rheumatoid arthritis.[provided by RefSeq, Dec 2010],

#### matters needing attention

Avoid repeated freezing and thawing!

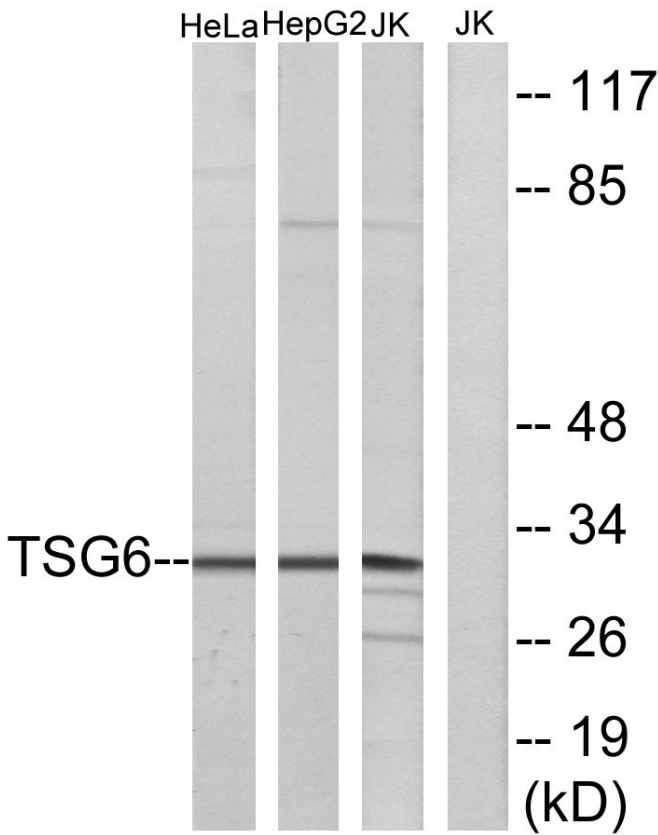
#### Usage suggestions

This product can be used in immunological reaction related experiments. For more information, please consult technical personnel.

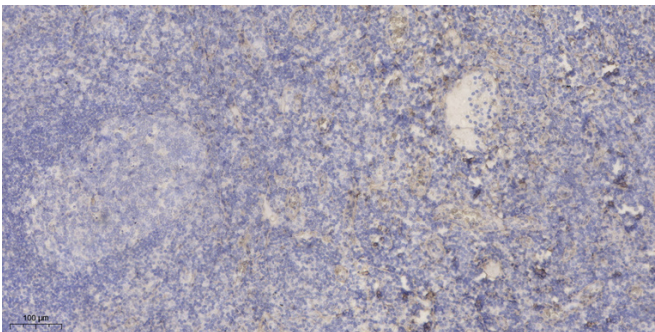
Nanjing BYabscience technology Co.,Ltd



## Products Images



Western blot analysis of lysates from Jurkat, HeLa, and HepG2 cells, using TSG6 Antibody. The lane on the right is blocked with the synthesized peptide.



Immunohistochemical analysis of paraffin-embedded human tonsil. 1, Antibody was diluted at 1:200(4° overnight). 2, Tris-EDTA,pH9.0 was used for antigen retrieval. 3,Secondary antibody was diluted at 1:200(room temperature, 30min).