



TNF- β Polyclonal Antibody

Catalog No	BYab-15974
Isotype	IgG
Reactivity	Human;Mouse;Rat;Monkey
Applications	WB;ELISA
Gene Name	LTA
Protein Name	Lymphotoxin-alpha
Immunogen	The antiserum was produced against synthesized peptide derived from human TNF-beta. AA range:17-66
Specificity	TNF- β Polyclonal Antibody detects endogenous levels of TNF- β protein.
Formulation	Liquid in PBS containing 50% glycerol, 0.5% BSA and 0.02% sodium azide.
Source	Polyclonal, Rabbit,IgG
Purification	The antibody was affinity-purified from rabbit antiserum by affinity-chromatography using epitope-specific immunogen.
Dilution	Western Blot: 1/500 - 1/2000. ELISA: 1/40000. Not yet tested in other applications.
Concentration	1 mg/ml
Purity	$\geq 90\%$
Storage Stability	-20°C/1 year
Synonyms	LTA; TNFB; TNFSF1; Lymphotoxin-alpha; LT-alpha; TNF-beta; Tumor necrosis factor ligand superfamily member 1
Observed Band	22kD
Cell Pathway	Secreted. Membrane. The homotrimer is secreted. The heterotrimer is membrane-associated.
Tissue Specificity	Lymph,Peripheral blood leukocyte,Peripheral blood mononuclear cells,Peripheral blood mononu
Function	disease:Genetic variations in LTA are associated with susceptibility to leprosy type 4 (LPRS4) [MIM:610988]; also known as susceptibility to age-dependent leprosy. Leprosy is a chronic infectious disease of peripheral sensory nerves caused by Mycobacterium leprae.,disease:Genetic variations in LTA are associated with susceptibility to psoriatic arthritis [MIM:607507]. Psoriasis is a chronic inflammatory dermatosis that affects approximately 2% of the population. It is characterized by red, scaly skin lesions that are usually found on the scalp, elbows, and knees, and may be associated with severe arthritis. Psoriatic arthritis has been defined as an inflammatory arthritis usually without any rheumatoid factor in serum (seronegative arthritis) associated with

Nanjing BYabscience technology Co.,Ltd



psoriasis.,function:Cytokine that in its homotrimeric form binds to TNFRSF1A/TNFR1, TNFRSF1B/TNFR and TNFRSF14/HVEM. In its hetero

Background

The encoded protein, a member of the tumor necrosis factor family, is a cytokine produced by lymphocytes. The protein is highly inducible, secreted, and forms heterotrimers with lymphotoxin-beta which anchor lymphotoxin-alpha to the cell surface. This protein also mediates a large variety of inflammatory, immunostimulatory, and antiviral responses, is involved in the formation of secondary lymphoid organs during development and plays a role in apoptosis. Genetic variations in this gene are associated with susceptibility to leprosy type 4, myocardial infarction, non-Hodgkin's lymphoma, and psoriatic arthritis. Alternatively spliced transcript variants have been observed for this gene. [provided by RefSeq, Jul 2012],

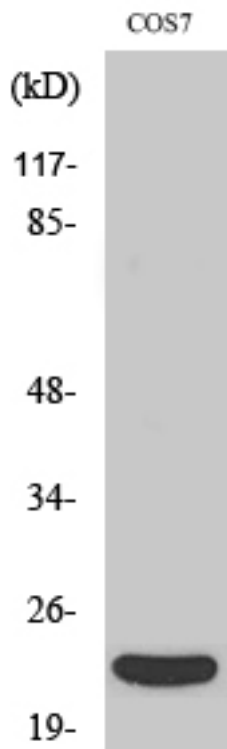
matters needing attention

Avoid repeated freezing and thawing!

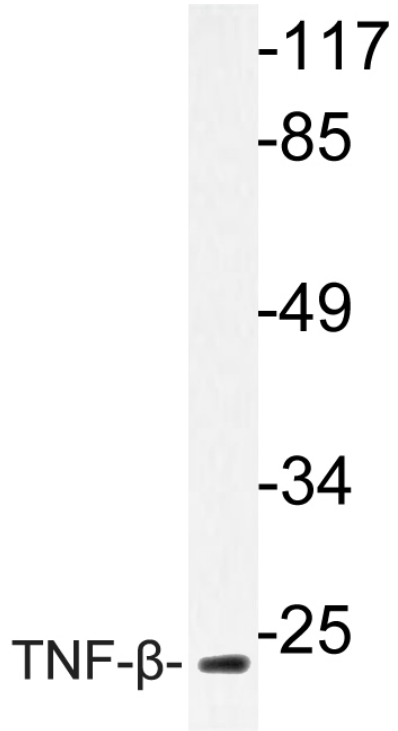
Usage suggestions

This product can be used in immunological reaction related experiments. For more information, please consult technical personnel.

Products Images



Western Blot analysis of various cells using TNF- β Polyclonal Antibody diluted at 1:1000. Secondary antibody(catalog#:RS0002) was diluted at 1:20000



Western blot analysis of lysate from COS-7 cell, using TNF- β antibodies.