



# TNF-IP 8 Polyclonal Antibody

<b>Catalog No</b>	BYab-15970
<b>Isotype</b>	IgG
<b>Reactivity</b>	Human;Mouse
<b>Applications</b>	WB;IHC;IF;ELISA
<b>Gene Name</b>	TNFAIP8
<b>Protein Name</b>	Tumor necrosis factor alpha-induced protein 8
<b>Immunogen</b>	The antiserum was produced against synthesized peptide derived from human TFIP8. AA range:31-80
<b>Specificity</b>	TNF-IP 8 Polyclonal Antibody detects endogenous levels of TNF-IP 8 protein.
<b>Formulation</b>	Liquid in PBS containing 50% glycerol, 0.5% BSA and 0.02% sodium azide.
<b>Source</b>	Polyclonal, Rabbit,IgG
<b>Purification</b>	The antibody was affinity-purified from rabbit antiserum by affinity-chromatography using epitope-specific immunogen.
<b>Dilution</b>	Western Blot: 1/500 - 1/2000. Immunohistochemistry: 1/100 - 1/300. Immunofluorescence: 1/200 - 1/1000. ELISA: 1/10000. Not yet tested in other applications.
<b>Concentration</b>	1 mg/ml
<b>Purity</b>	≥90%
<b>Storage Stability</b>	-20°C/1 year
<b>Synonyms</b>	TNFAIP8; Tumor necrosis factor alpha-induced protein 8; TNF alpha-induced protein 8; Head and neck tumor and metastasis-related protein; MDC-3.13; NF-kappa-B-inducible DED-containing protein; NDED; SCC-S2; TNF-induced protein GG2-1
<b>Observed Band</b>	23kD
<b>Cell Pathway</b>	Cytoplasm .
<b>Tissue Specificity</b>	Expressed at high levels in the spleen, lymph node, thymus, thyroid, bone marrow and placenta. Expressed at high levels both in various tumor tissues, unstimulated and cytokine-activated cultured cells. Expressed at low levels in the spinal cord, ovary, lung, adrenal glands, heart, brain, testis and skeletal muscle.
<b>Function</b>	developmental stage:Expressed at high levels in the fetal liver, lung and kidney.,function:Acts as a negative mediator of apoptosis and may play a role in tumor progression. Suppresses the TNF-mediated apoptosis by inhibiting caspase-8 activity but not the processing of procaspase-8, subsequently resulting

Nanjing BYabscience technology Co.,Ltd



in inhibition of BID cleavage and caspase-3 activation.,induction:By nuclear factor-KB (NF-KB) and TNF. Induction by TNF depends upon activation of NF-KB.,similarity:Belongs to the TNFAIP8 family.,tissue specificity:Expressed at high levels in the spleen, lymph node, thymus, thyroid, bone marrow and placenta. Expressed at high levels both in various tumor tissues, unstimulated and cytokine-activated cultured cells. Expressed at low levels in the spinal cord, ovary, lung, adrenal glands, heart, brain, testis and skeletal muscle.,

**Background**

developmental stage:Expressed at high levels in the fetal liver, lung and kidney.,function:Acts as a negative mediator of apoptosis and may play a role in tumor progression. Suppresses the TNF-mediated apoptosis by inhibiting caspase-8 activity but not the processing of procaspase-8, subsequently resulting in inhibition of BID cleavage and caspase-3 activation.,induction:By nuclear factor-KB (NF-KB) and TNF. Induction by TNF depends upon activation of NF-KB.,similarity:Belongs to the TNFAIP8 family.,tissue specificity:Expressed at high levels in the spleen, lymph node, thymus, thyroid, bone marrow and placenta. Expressed at high levels both in various tumor tissues, unstimulated and cytokine-activated cultured cells. Expressed at low levels in the spinal cord, ovary, lung, adrenal glands, heart, brain, testis and skeletal muscle.,

**matters needing attention**

Avoid repeated freezing and thawing!

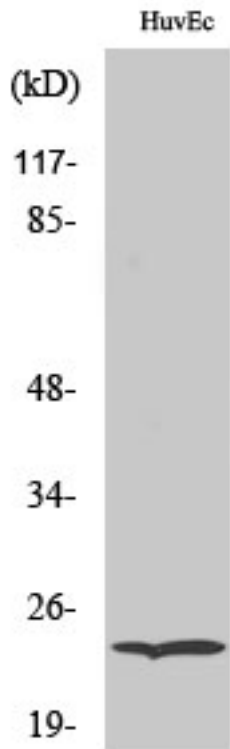
**Usage suggestions**

This product can be used in immunological reaction related experiments. For more information, please consult technical personnel.

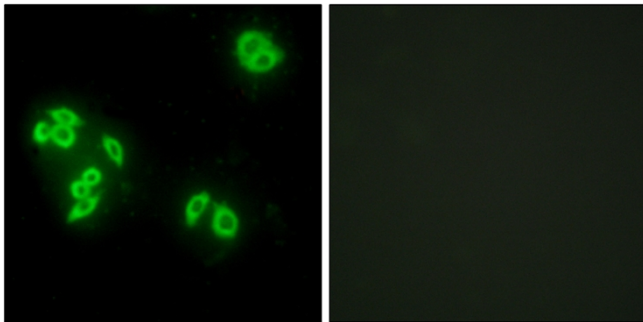
Nanjing BYabscience technology Co.,Ltd



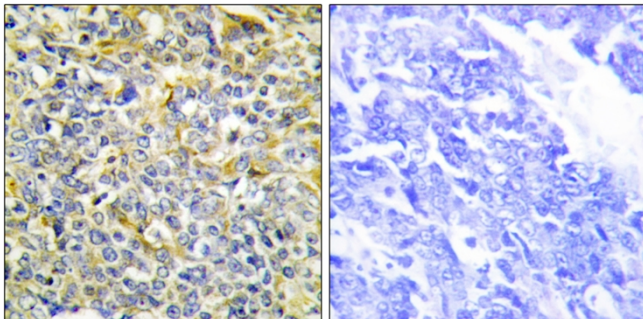
## Products Images



Western Blot analysis of various cells using TNF-IP 8 Polyclonal Antibody. Secondary antibody(catalog#:RS0002) was diluted at 1:20000

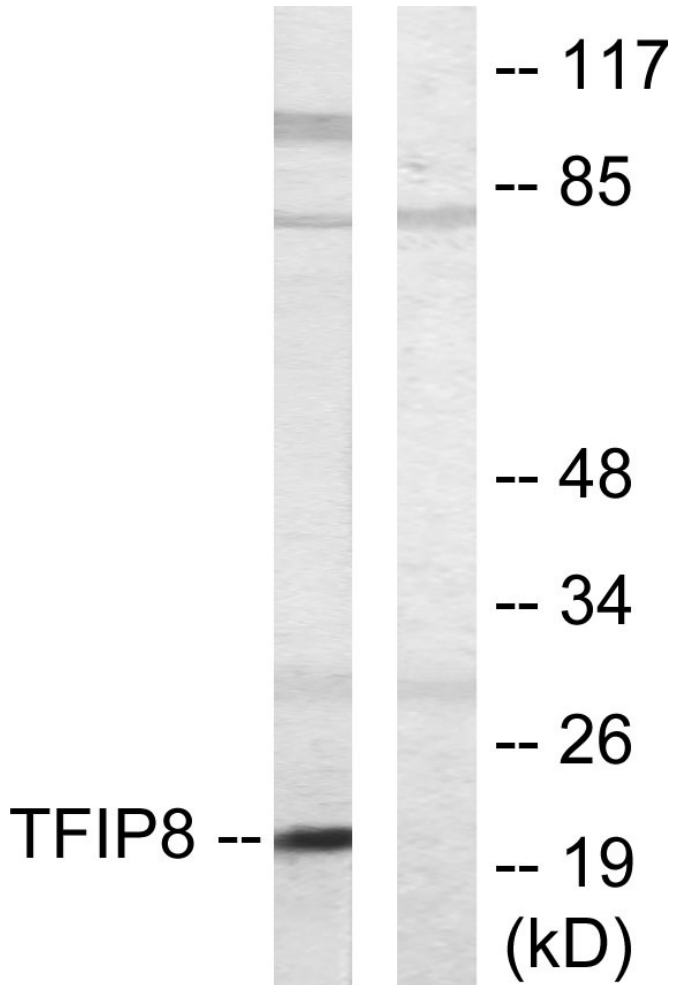


Immunofluorescence analysis of A549 cells, using TFIP8 Antibody. The picture on the right is blocked with the synthesized peptide.



Immunohistochemistry analysis of paraffin-embedded human lung carcinoma tissue, using TFIP8 Antibody. The picture on the right is blocked with the synthesized peptide.

Nanjing BYabscience technology Co.,Ltd



Western blot analysis of lysates from HUVEC cells, using TFIP8 Antibody. The lane on the right is blocked with the synthesized peptide.