



# TNF-IP 1 Polyclonal Antibody

<b>Catalog No</b>	BYab-15969
<b>Isotype</b>	IgG
<b>Reactivity</b>	Human;Mouse;Rat
<b>Applications</b>	WB;IHC;IF;ELISA
<b>Gene Name</b>	TNFAIP1
<b>Protein Name</b>	BTB/POZ domain-containing adapter for CUL3-mediated RhoA degradation protein 2
<b>Immunogen</b>	The antiserum was produced against synthesized peptide derived from human TNAP1. AA range:71-120
<b>Specificity</b>	TNF-IP 1 Polyclonal Antibody detects endogenous levels of TNF-IP 1 protein.
<b>Formulation</b>	Liquid in PBS containing 50% glycerol, 0.5% BSA and 0.02% sodium azide.
<b>Source</b>	Polyclonal, Rabbit,IgG
<b>Purification</b>	The antibody was affinity-purified from rabbit antiserum by affinity-chromatography using epitope-specific immunogen.
<b>Dilution</b>	WB: 1/500 - 1/2000. IHC: 1/100 - 1/300. ELISA: 1/5000.. IF 1:50-200
<b>Concentration</b>	1 mg/ml
<b>Purity</b>	≥90%
<b>Storage Stability</b>	-20°C/1 year
<b>Synonyms</b>	TNFAIP1; BACURD2; EDP1; BTB/POZ domain-containing adapter for CUL3-mediated RhoA degradation protein 2; hBACURD2; BTB/POZ domain-containing protein TNFAIP1; Protein B12; Tumor necrosis factor; alpha-induced protein 1, endothelial
<b>Observed Band</b>	34kD
<b>Cell Pathway</b>	Cytoplasm. Nucleus. Endosome. Colocalizes with RHOB in endosomes.
<b>Tissue Specificity</b>	Amygdala,Endothelial cell,Epithelium,Lung,
<b>Function</b>	function:Enhances the PCNA-dependent DNA polymerase delta activity.,induction:By TNF-alpha, interleukin-1 beta and lipopolysaccharide (LPS).,similarity:Belongs to the KCTD10/KCTD13/TNFAIP1 family.,similarity:Contains 1 BTB (POZ) domain.,subunit:Interacts with PCNA.,
<b>Background</b>	This gene was identified as a gene whose expression can be induced by the tumor necrosis factor alpha (TNF) in umbilical vein endothelial cells. Studies of a similar gene in mouse suggest that the expression of this gene is developmentally

**Nanjing BYabscience technology Co.,Ltd**



regulated in a tissue-specific manner. [provided by RefSeq, Jul 2008],

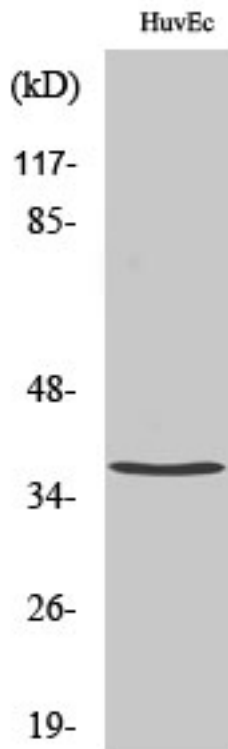
**matters needing attention**

Avoid repeated freezing and thawing!

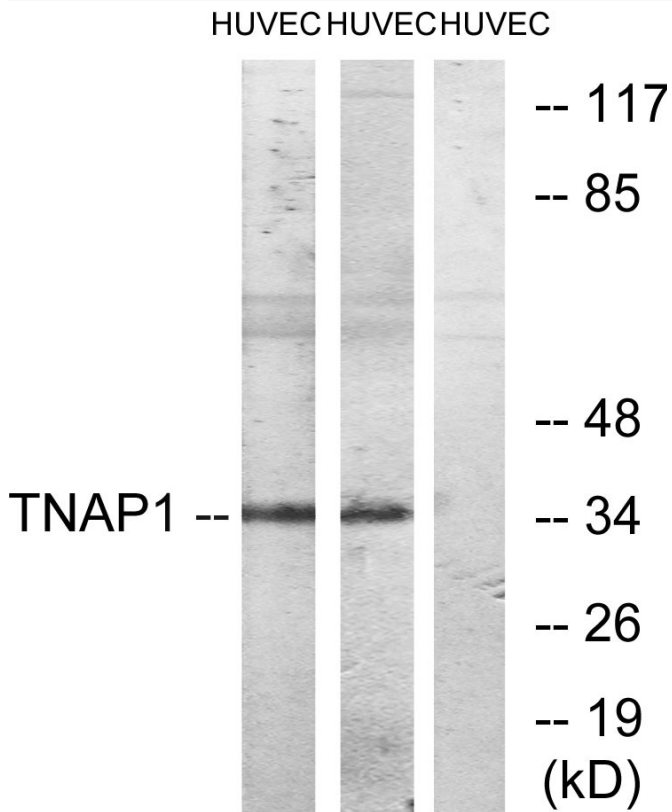
**Usage suggestions**

This product can be used in immunological reaction related experiments. For more information, please consult technical personnel.

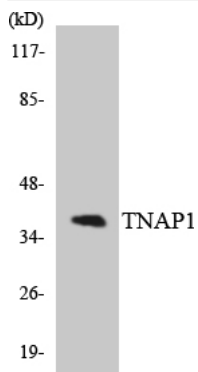
## Products Images



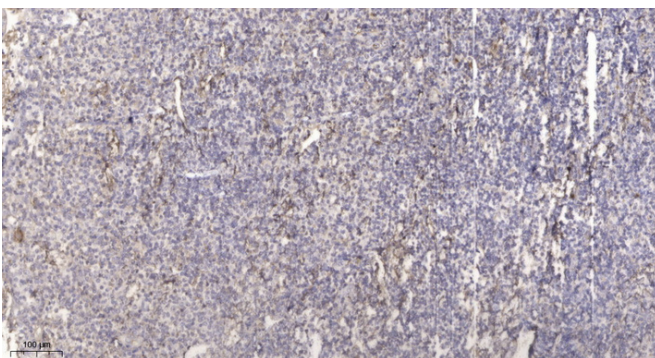
Western Blot analysis of various cells using TNF-IP 1 Polyclonal Antibody diluted at 1:500. Secondary antibody(catalog#:RS0002) was diluted at 1:20000



Western blot analysis of lysates from HUVEC cells, treated with PMA 125ng/ml 30', using TNAP1 Antibody. The lane on the right is blocked with the synthesized peptide.



Western blot analysis of the lysates from 293 cells using TNAP1 antibody.



Immunohistochemical analysis of paraffin-embedded human tonsil. 1, Antibody was diluted at 1:200(4° overnight). 2, Tris-EDTA,pH9.0 was used for antigen retrieval. 3,Secondary antibody was diluted at 1:200(room temperature, 45min).