



TADA2L Polyclonal Antibody

Catalog No	BYab-15965
Isotype	IgG
Reactivity	Human;Mouse;Rat;Monkey
Applications	WB;ELISA
Gene Name	TADA2A
Protein Name	Transcriptional adapter 2-alpha
Immunogen	The antiserum was produced against synthesized peptide derived from human ADA2L. AA range:206-255
Specificity	TADA2L Polyclonal Antibody detects endogenous levels of TADA2L protein.
Formulation	Liquid in PBS containing 50% glycerol, 0.5% BSA and 0.02% sodium azide.
Source	Polyclonal, Rabbit,IgG
Purification	The antibody was affinity-purified from rabbit antiserum by affinity-chromatography using epitope-specific immunogen.
Dilution	Western Blot: 1/500 - 1/2000. ELISA: 1/10000. Not yet tested in other applications.
Concentration	1 mg/ml
Purity	≥90%
Storage Stability	-20°C/1 year
Synonyms	TADA2A; TADA2L; KL04P; Transcriptional adapter 2-alpha; Transcriptional adapter 2-like; ADA2-like protein
Observed Band	47kD
Cell Pathway	Nucleus . Chromosome .
Tissue Specificity	Expressed in all tissues, but most abundantly in testis.
Function	function: Binds double-stranded DNA. Binds dinucleosomes, probably at the linker region between neighboring nucleosomes. Plays a role in chromatin remodeling (By similarity). Required for the function of some acidic activation domains, which activate transcription from a distant site.,similarity: Contains 1 SANT domain.,similarity: Contains 1 SWIRM domain.,subunit: Interacts with GCN5 and NR3C1. Associated with the P/CAF protein in the P/CAF complex. Component of the P/CAF complex, at least composed of TADA2L/ADA2, TADA3L/ADA3, TAF5L/PAF65-beta, TAF6L/PAF65-alpha, TAF10/TAFII30, TAF12/TAFII20, TAF9/TAFII31 and TRRAP.,tissue specificity: Expressed in all tissues, but most abundantly in testis.,

Nanjing BYabscience technology Co.,Ltd



Background

Many DNA-binding transcriptional activator proteins enhance the initiation rate of RNA polymerase II-mediated gene transcription by interacting functionally with the general transcription machinery bound at the basal promoter. Adaptor proteins are usually required for this activation, possibly to acetylate and destabilize nucleosomes, thereby relieving chromatin constraints at the promoter. The protein encoded by this gene is a transcriptional activator adaptor and has been found to be part of the PCAF histone acetylase complex. Several alternatively spliced transcript variants encoding different isoforms of this gene have been described, but the full-length nature of some of these variants has not been determined. [provided by RefSeq, Oct 2009],

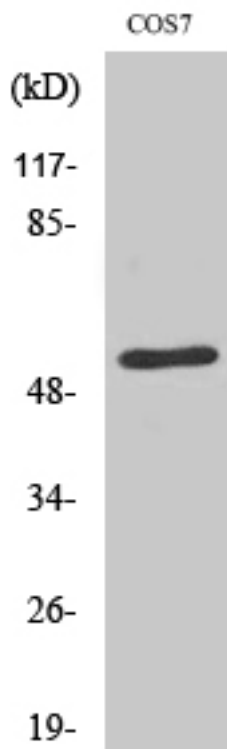
matters needing attention

Avoid repeated freezing and thawing!

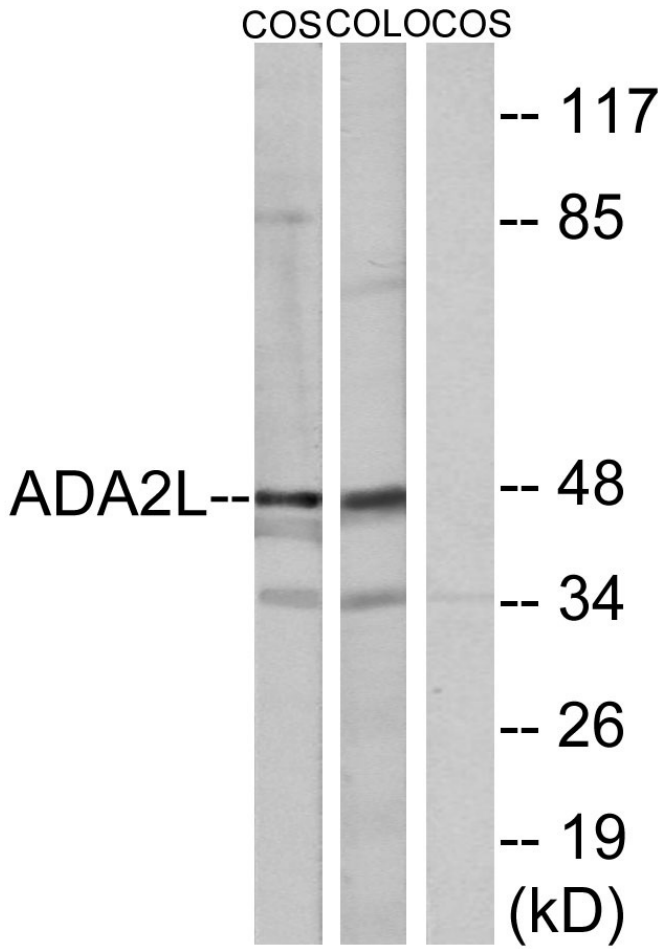
Usage suggestions

This product can be used in immunological reaction related experiments. For more information, please consult technical personnel.

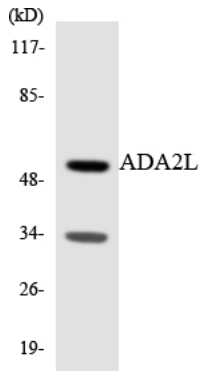
Products Images



Western Blot analysis of various cells using TADA2L Polyclonal Antibody diluted at 1:2000 cells nucleus extracted by Minute TM Cytoplasmic and Nuclear Fractionation kit (SC-003, Inventbiotech, MN, USA).



Western blot analysis of lysates from COS7 and COLO205 cells, using ADA2L Antibody. The lane on the right is blocked with the synthesized peptide.



Western blot analysis of the lysates from RAW264.7 cells using ADA2L antibody.