



PTH Polyclonal Antibody

Catalog No	BYab-15957
Isotype	IgG
Reactivity	Human;Rat;Mouse;
Applications	WB;IHC
Gene Name	PTH
Protein Name	Parathyroid hormone
Immunogen	The antiserum was produced against synthesized peptide derived from human Parathyroid Hormone. AA range:51-100
Specificity	PTH Polyclonal Antibody detects endogenous levels of PTH protein.
Formulation	Liquid in PBS containing 50% glycerol, 0.5% BSA and 0.02% sodium azide.
Source	Polyclonal, Rabbit,IgG
Purification	The antibody was affinity-purified from rabbit antiserum by affinity-chromatography using epitope-specific immunogen.
Dilution	WB 1:500-2000;IHC-p 1:50-300
Concentration	1 mg/ml
Purity	≥90%
Storage Stability	-20°C/1 year
Synonyms	PTH; Parathyroid hormone; PTH; Parathormone; Parathyrin
Observed Band	16kD
Cell Pathway	Secreted.
Tissue Specificity	
Function	disease:Defects in PTH are a cause of familial isolated hypoparathyroidism (FIH) [MIM:146200]. FIH exist both as autosomal dominant and recessive forms of hypoparathyroidism.,function:PTH elevates calcium level by dissolving the salts in bone and preventing their renal excretion.,online information:Parathyroid hormone entry,similarity:Belongs to the parathyroid hormone family.,
Background	This gene encodes a member of the parathyroid family of proteins. The encoded preproprotein is proteolytically processed to generate a protein that binds to the parathyroid hormone/parathyroid hormone-related peptide receptor and regulates blood calcium and phosphate levels. Excess production of the encoded protein, known as hyperparathyroidism, can result in hypercalcemia and kidney stones.

Nanjing BYabscience technology Co.,Ltd



On the other hand, defective processing of the encoded protein may lead to hypoparathyroidism, which can result in hypocalcemia and numbness. Alternative splicing results in multiple transcript variants. [provided by RefSeq, Oct 2015],

matters needing attention

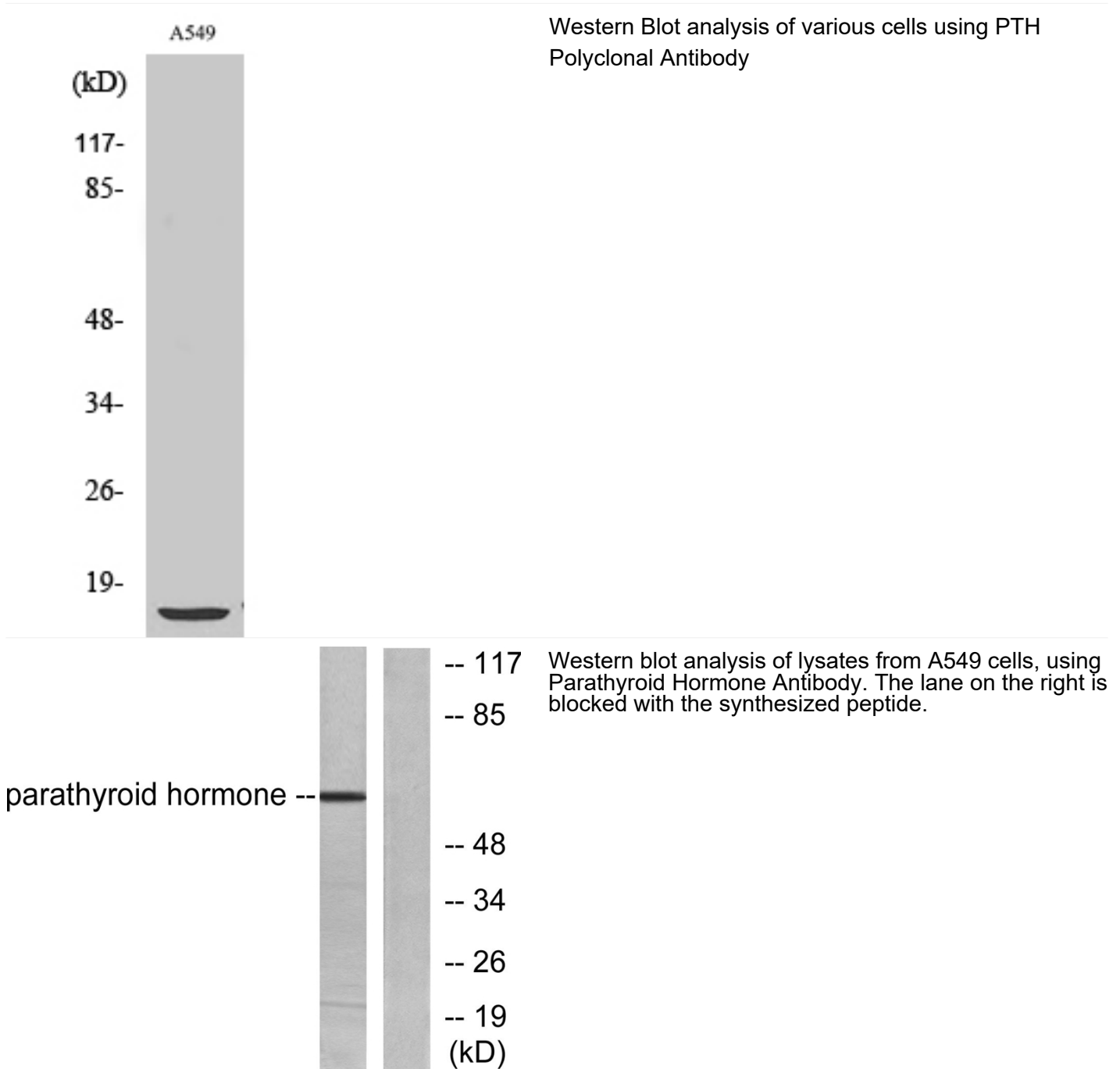
Avoid repeated freezing and thawing!

Usage suggestions

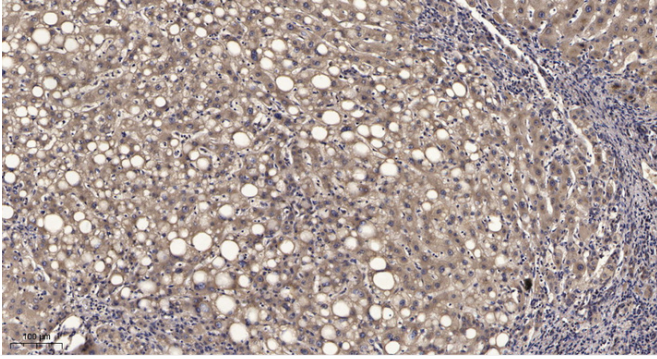
This product can be used in immunological reaction related experiments. For more information, please consult technical personnel.



Products Images



Nanjing BYabscience technology Co.,Ltd



Immunohistochemical analysis of paraffin-embedded human liver cancer. 1, Antibody was diluted at 1:200(4° overnight). 2, Tris-EDTA,pH9.0 was used for antigen retrieval. 3,Secondary antibody was diluted at 1:200(room temperature, 45min).