



# PIG-F Polyclonal Antibody

<b>Catalog No</b>	BYab-15956
<b>Isotype</b>	IgG
<b>Reactivity</b>	Human;Mouse
<b>Applications</b>	IHC;IF;ELISA
<b>Gene Name</b>	PIGF
<b>Protein Name</b>	Phosphatidylinositol-glycan biosynthesis class F protein
<b>Immunogen</b>	Synthesized peptide derived from PIG-F . at AA range: 130-210
<b>Specificity</b>	PIG-F Polyclonal Antibody detects endogenous levels of PIG-F protein.
<b>Formulation</b>	Liquid in PBS containing 50% glycerol, 0.5% BSA and 0.02% sodium azide.
<b>Source</b>	Polyclonal, Rabbit,IgG
<b>Purification</b>	The antibody was affinity-purified from rabbit antiserum by affinity-chromatography using epitope-specific immunogen.
<b>Dilution</b>	IHC: 1/100 - 1/300. ELISA: 1/40000.. IF 1:50-200
<b>Concentration</b>	1 mg/ml
<b>Purity</b>	≥90%
<b>Storage Stability</b>	-20°C/1 year
<b>Synonyms</b>	PIGF; Phosphatidylinositol-glycan biosynthesis class F protein; PIG-F; GPI11 homolog
<b>Observed Band</b>	
<b>Cell Pathway</b>	Endoplasmic reticulum membrane ; Multi-pass membrane protein .
<b>Tissue Specificity</b>	Testis,
<b>Function</b>	function:Involved in GPI-anchor biosynthesis through the transfer of ethanolamine phosphate to the third mannose of GPI.,pathway:Glycolipid biosynthesis; glycosylphosphatidylinositol-anchor biosynthesis.,similarity:Belongs to the PIGF family.,subunit:Forms a complex with PIGG and PIGO. PIGF is required to stabilize PIGG and PIGO.,
<b>Background</b>	This gene encodes a protein involved in glycosylphosphatidylinositol (GPI)-anchor biosynthesis. The GPI-anchor, a glycolipid containing three mannose molecules in its core backbone, is found on many blood cells where it serves to anchor proteins to the cell surface. The encoded protein and another GPI synthesis protein, PIGO, function in the transfer of ethanolaminephosphate to

Nanjing BYabscience technology Co.,Ltd



the third mannose in GPI. Alternatively spliced transcript variants encoding different isoforms have been described. [provided by RefSeq, Jul 2008],

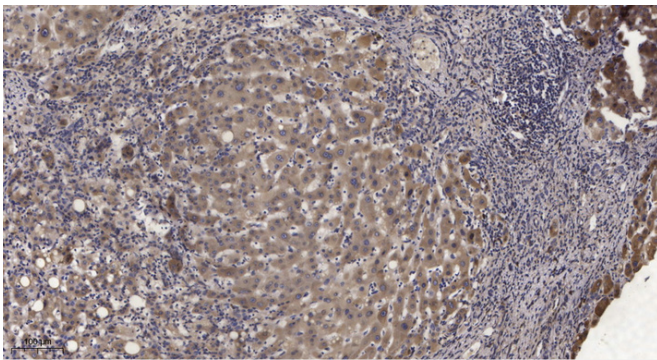
**matters needing attention**

Avoid repeated freezing and thawing!

**Usage suggestions**

This product can be used in immunological reaction related experiments. For more information, please consult technical personnel.

## Products Images



Immunohistochemical analysis of paraffin-embedded human liver cancer. 1, Antibody was diluted at 1:200(4° overnight). 2, Tris-EDTA,pH9.0 was used for antigen retrieval. 3,Secondary antibody was diluted at 1:200(room temperature, 45min).