



Neurophysin I Polyclonal Antibody

Catalog No	BYab-15953
Isotype	IgG
Reactivity	Human;Rat
Applications	WB;IHC;IF;ELISA
Gene Name	OXT
Protein Name	Oxytocin-neurophysin 1
Immunogen	The antiserum was produced against synthesized peptide derived from human Neurophysin I. AA range:40-89
Specificity	Neurophysin I Polyclonal Antibody detects endogenous levels of Neurophysin I protein.
Formulation	Liquid in PBS containing 50% glycerol, 0.5% BSA and 0.02% sodium azide.
Source	Polyclonal, Rabbit,IgG
Purification	The antibody was affinity-purified from rabbit antiserum by affinity-chromatography using epitope-specific immunogen.
Dilution	WB: 1/500 - 1/2000. IHC: 1/100 - 1/300. ELISA: 1/20000.. IF 1:50-200
Concentration	1 mg/ml
Purity	≥90%
Storage Stability	-20°C/1 year
Synonyms	OXT; OT; Oxytocin-neurophysin 1; OT-NPI
Observed Band	19kD
Cell Pathway	Secreted.
Tissue Specificity	Lung,
Function	function:Neurophysin 1 specifically binds oxytocin.,function:Oxytocin causes contraction of the smooth muscle of the uterus and of the mammary gland.,online information:Oxytocin entry,pharmaceutical:Oxytocin is available under the names Pitocin (Parke-Davis) and Syntocinon (Sandoz). Used to artificially speed or induce labor.,similarity:Belongs to the vasopressin/oxytocin family.,
Background	This gene encodes a precursor protein that is processed to produce oxytocin and neurophysin I. Oxytocin is a posterior pituitary hormone which is synthesized as an inactive precursor in the hypothalamus along with its carrier protein neurophysin I. Together with neurophysin, it is packaged into neurosecretory vesicles and transported axonally to the nerve endings in the neurohypophysis,

Nanjing BYabscience technology Co.,Ltd



where it is either stored or secreted into the bloodstream. The precursor seems to be activated while it is being transported along the axon to the posterior pituitary. This hormone contracts smooth muscle during parturition and lactation. It is also involved in cognition, tolerance, adaptation and complex sexual and maternal behaviour, as well as in the regulation of water excretion and cardiovascular functions. [provided by RefSeq, Dec 2013],

matters needing attention

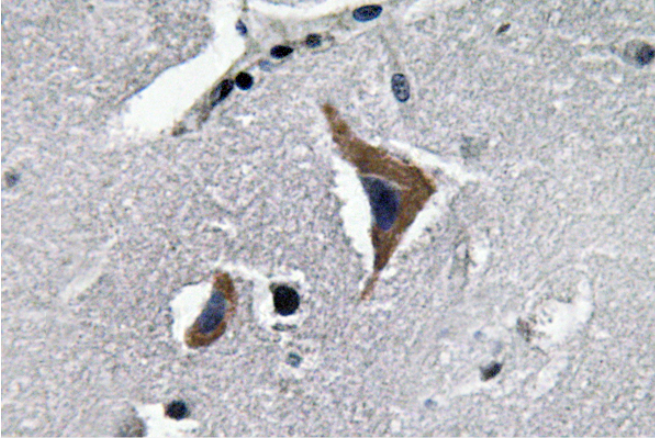
Avoid repeated freezing and thawing!

Usage suggestions

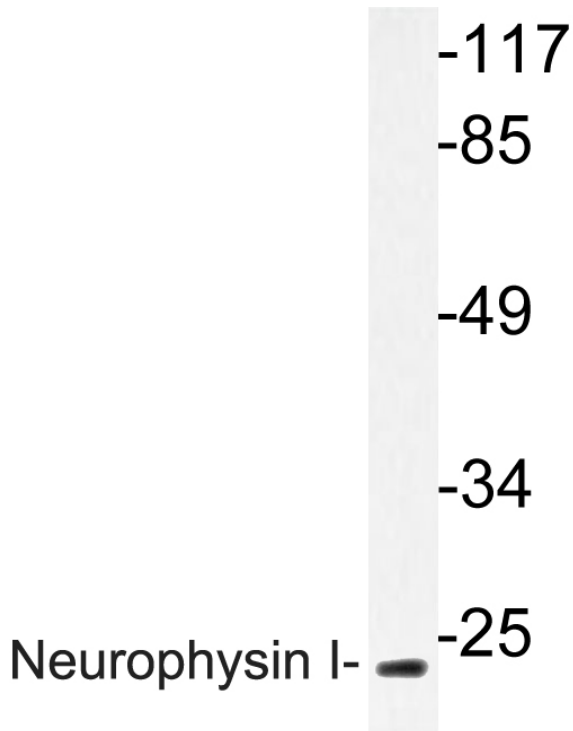
This product can be used in immunological reaction related experiments. For more information, please consult technical personnel.



Products Images



Immunohistochemistry analysis of Neurophysin I antibody in paraffin-embedded human brain tissue.



Western blot analysis of lysate from K562 cells, using Neurophysin I antibody.