



IP-10 Polyclonal Antibody

Catalog No	BYab-15944
Isotype	IgG
Reactivity	Human;Pig;chicken
Applications	IHC;IF;ELISA
Gene Name	CXCL10
Protein Name	C-X-C motif chemokine 10
Immunogen	Synthesized peptide derived from IP-10 . at AA range: 20-100
Specificity	IP-10 Polyclonal Antibody detects endogenous levels of IP-10 protein.
Formulation	Liquid in PBS containing 50% glycerol, 0.5% BSA and 0.02% sodium azide.
Source	Polyclonal, Rabbit,IgG
Purification	The antibody was affinity-purified from rabbit antiserum by affinity-chromatography using epitope-specific immunogen.
Dilution	IHC: 1/100 - 1/300. ELISA: 1/40000.. IF 1:50-200
Concentration	1 mg/ml
Purity	≥90%
Storage Stability	-20°C/1 year
Synonyms	CXCL10; INP10; SCYB10; C-X-C motif chemokine 10; 10 kDa interferon gamma-induced protein; Gamma-IP10; IP-10; Small-inducible cytokine B10
Observed Band	
Cell Pathway	Secreted .
Tissue Specificity	Mainly secreted by monocytes, endothelial cells as well as fibroblasts. Expressed by epithelial cells in thymus (PubMed:11157474). Microglial cells produce CXCL10 in response to viral stimulation (PubMed:12663757).
Function	function:Chemotactic for monocytes and T-lymphocytes. Binds to CXCR3.,induction:By interferon gamma. A diverse population of cell types rapidly increases transcription of mRNA encoding this protein. This suggests that gamma-induced protein may be a key mediator of the interferon gamma response.,mass spectrometry: PubMed:11559369,online information:CXCL10 entry,PTM:CXCL10(1-73) is produced by proteolytic cleavage after secretion from keratinocytes.,similarity:Belongs to the intercrine alpha (chemokine CxC) family.,
Background	C-X-C motif chemokine ligand 10(CXCL10) Homo sapiens This antimicrobial gene encodes a chemokine of the CXC subfamily and ligand for the receptor

Nanjing BYabscience technology Co.,Ltd



CXCR3. Binding of this protein to CXCR3 results in pleiotropic effects, including stimulation of monocytes, natural killer and T-cell migration, and modulation of adhesion molecule expression. [provided by RefSeq, Sep 2014],

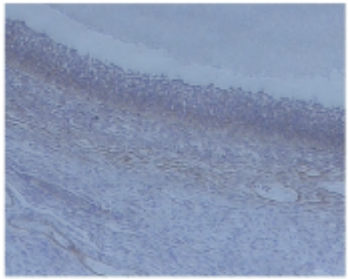
matters needing attention

Avoid repeated freezing and thawing!

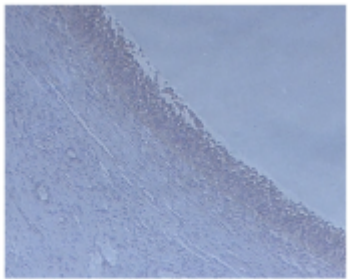
Usage suggestions

This product can be used in immunological reaction related experiments. For more information, please consult technical personnel.

Products Images



CXCR3 10X



CXCL10 10X

Immunohistochemical analysis of paraffin-embedded chicken tissue, the picture was kindly provided by our customer.