



IL-20 Polyclonal Antibody

Catalog No	BYab-15933
Isotype	IgG
Reactivity	Human;Mouse
Applications	WB;ELISA
Gene Name	IL20
Protein Name	Interleukin-20
Immunogen	The antiserum was produced against synthesized peptide derived from human IL-20. AA range:12-61
Specificity	IL-20 Polyclonal Antibody detects endogenous levels of IL-20 protein.
Formulation	Liquid in PBS containing 50% glycerol, 0.5% BSA and 0.02% sodium azide.
Source	Polyclonal, Rabbit,IgG
Purification	The antibody was affinity-purified from rabbit antiserum by affinity-chromatography using epitope-specific immunogen.
Dilution	Western Blot: 1/500 - 1/2000. ELISA: 1/5000. Not yet tested in other applications.
Concentration	1 mg/ml
Purity	≥90%
Storage Stability	-20°C/1 year
Synonyms	IL20; ZCYTO10; Interleukin-20; IL-20; Cytokine Zcyto10
Observed Band	28kD
Cell Pathway	Secreted.
Tissue Specificity	Expressed in most tissues and five major cell types: epithelial cells (primarily skin, buccal mucosa, tongue, nasal mucosa, lung, ureter, breast, prostate, fallopian tube, and adrenal gland), myoepithelial cells (mainly prostate), endothelial cells (mainly in small vessels or capillaries), macrophages, and skeletal muscle. Isoform 2 was detected in the lung tissue only.
Function	function:Cytokine that may be involved in epidermal function and psoriasis. Acts through STAT3.,similarity:Belongs to the IL-10 family.,tissue specificity:Expressed at very low levels in skin, trachea, and other tissues.,
Background	The protein encoded by this gene is a cytokine structurally related to interleukin 10 (IL10). This cytokine has been shown to transduce its signal through signal transducer and activator of transcription 3 (STAT3) in keratinocytes. A specific receptor for this cytokine is found to be expressed in skin and upregulated

Nanjing BYabscience technology Co.,Ltd



dramatically in psoriatic skin, suggesting a role for this protein in epidermal function and psoriasis. [provided by RefSeq, Jul 2008],

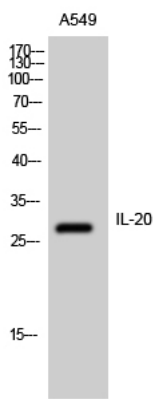
matters needing attention

Avoid repeated freezing and thawing!

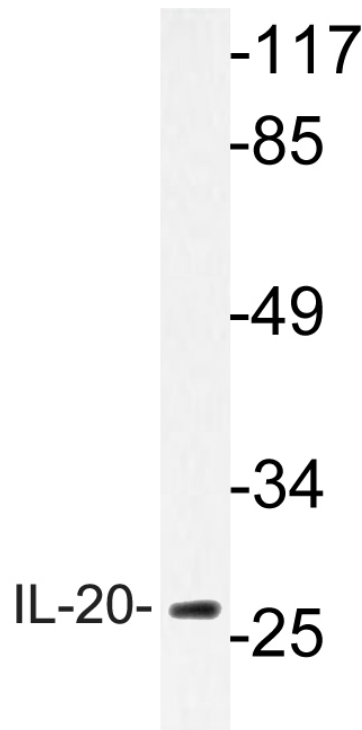
Usage suggestions

This product can be used in immunological reaction related experiments. For more information, please consult technical personnel.

Products Images



Western Blot analysis of A549 cells using IL-20 Polyclonal Antibody



Western blot analysis of lysate from A549 cells, using IL-20 antibody.

Nanjing BYabscience technology Co.,Ltd