



# GnRH I Polyclonal Antibody

<b>Catalog No</b>	BYab-15920
<b>Isotype</b>	IgG
<b>Reactivity</b>	Human;Rat;Mouse;
<b>Applications</b>	IHC;IF;ELISA
<b>Gene Name</b>	GNRH1
<b>Protein Name</b>	Progonadoliberin-1
<b>Immunogen</b>	The antiserum was produced against synthesized peptide derived from human GnRH I. AA range:43-92
<b>Specificity</b>	GnRH I Polyclonal Antibody detects endogenous levels of GnRH I protein.
<b>Formulation</b>	Liquid in PBS containing 50% glycerol, 0.5% BSA and 0.02% sodium azide.
<b>Source</b>	Polyclonal, Rabbit,IgG
<b>Purification</b>	The antibody was affinity-purified from rabbit antiserum by affinity-chromatography using epitope-specific immunogen.
<b>Dilution</b>	WB 1:500-2000 ,IHC: 1/100 - 1/300. ELISA: 1/10000.. IF 1:50-200
<b>Concentration</b>	1 mg/ml
<b>Purity</b>	≥90%
<b>Storage Stability</b>	-20°C/1 year
<b>Synonyms</b>	GNRH1; GNRH; GRH; LHRH; Progonadoliberin-1; Progonadoliberin I
<b>Observed Band</b>	
<b>Cell Pathway</b>	Secreted.
<b>Tissue Specificity</b>	Brain,
<b>Function</b>	function:Stimulates the secretion of gonadotropins; it stimulates the secretion of both luteinizing and follicle-stimulating hormones.,online information:Gonadotropin-releasing hormone entry,pharmaceutical:Available under the names Factrel (Ayerst Labs), Lutrepulse or Lutrelef (Ferring Pharmaceuticals) and Relisorm (Serono). Used in evaluating hypothalamic-pituitary gonadotropic function.,similarity:Belongs to the GnRH family.,
<b>Background</b>	gonadotropin releasing hormone 1(GNRH1) Homo sapiens This gene encodes a preproprotein that is proteolytically processed to generate a peptide that is a member of the gonadotropin-releasing hormone (GnRH) family of

Nanjing BYabscience technology Co.,Ltd



peptides. Alternative splicing results in multiple transcript variants, at least one of which is secreted and then cleaved to generate gonadoliberin-1 and GnRH-associated peptide 1. Gonadoliberin-1 stimulates the release of luteinizing and follicle stimulating hormones, which are important for reproduction. Mutations in this gene are associated with hypogonadotropic hypogonadism. [provided by RefSeq, Nov 2015],

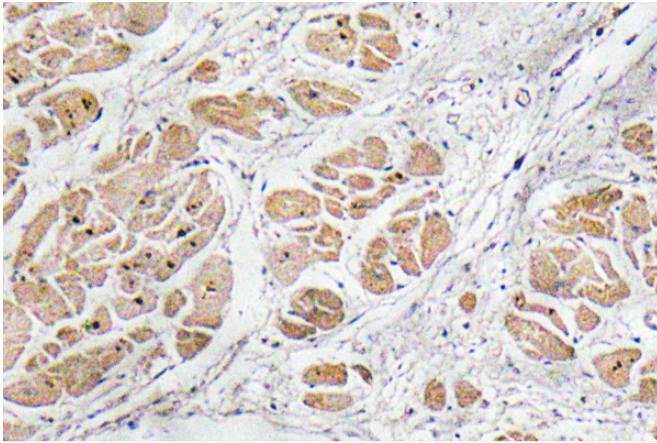
**matters needing attention**

Avoid repeated freezing and thawing!

**Usage suggestions**

This product can be used in immunological reaction related experiments. For more information, please consult technical personnel.

## Products Images



Immunohistochemistry analysis of GnRH I antibody in paraffin-embedded human heart tissue.