



GIPR Polyclonal Antibody

Catalog No	BYab-15919
Isotype	IgG
Reactivity	Human;Rat;Mouse;
Applications	WB;IHC;IF;ELISA
Gene Name	GIPR
Protein Name	Gastric inhibitory polypeptide receptor
Immunogen	The antiserum was produced against synthesized peptide derived from human GIPR. AA range:93-142
Specificity	GIPR Polyclonal Antibody detects endogenous levels of GIPR protein.
Formulation	Liquid in PBS containing 50% glycerol, 0.5% BSA and 0.02% sodium azide.
Source	Polyclonal, Rabbit,IgG
Purification	The antibody was affinity-purified from rabbit antiserum by affinity-chromatography using epitope-specific immunogen.
Dilution	Western Blot: 1/500 - 1/2000. Immunohistochemistry: 1/100 - 1/300. Immunofluorescence: 1/200 - 1/1000. ELISA: 1/20000. Not yet tested in other applications.
Concentration	1 mg/ml
Purity	≥90%
Storage Stability	-20°C/1 year
Synonyms	GIPR; Gastric inhibitory polypeptide receptor; GIP-R; Glucose-dependent insulinotropic polypeptide receptor
Observed Band	53kD
Cell Pathway	Cell membrane; Multi-pass membrane protein.
Tissue Specificity	Colon,G-protein coupled receptors,Pancreas,
Function	function:This is a receptor for GIP. The activity of this receptor is mediated by G proteins which activate adenylyl cyclase.,similarity:Belongs to the G-protein coupled receptor 2 family.,
Background	This gene encodes a G-protein coupled receptor for gastric inhibitory polypeptide (GIP), which was originally identified as an activity in gut extracts that inhibited gastric acid secretion and gastrin release, but subsequently was demonstrated to stimulate insulin release in the presence of elevated glucose. Mice lacking this gene exhibit higher blood glucose levels with impaired initial insulin response after

Nanjing BYabscience technology Co.,Ltd



oral glucose load. Defect in this gene thus may contribute to the pathogenesis of diabetes. [provided by RefSeq, Oct 2011],

matters needing attention

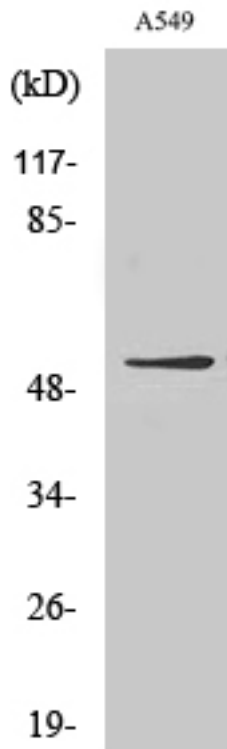
Avoid repeated freezing and thawing!

Usage suggestions

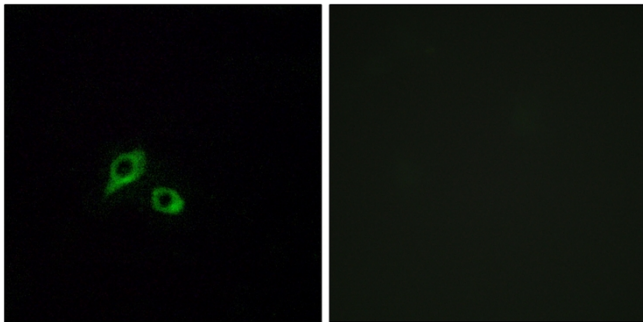
This product can be used in immunological reaction related experiments. For more information, please consult technical personnel.



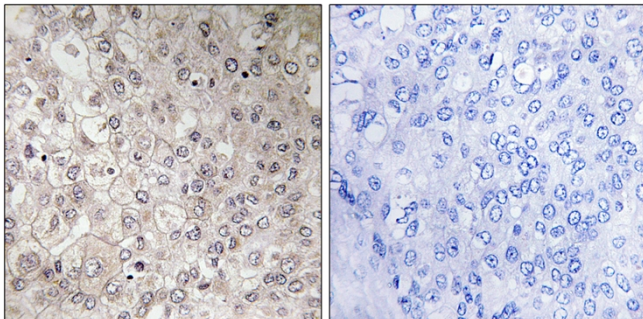
Products Images



Western Blot analysis of various cells using GIPR Polyclonal Antibody

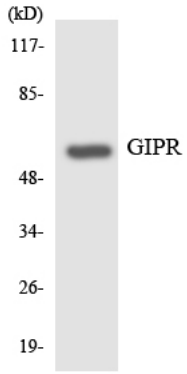


Immunofluorescence analysis of MCF7 cells, using GIPR Antibody. The picture on the right is blocked with the synthesized peptide.



Immunohistochemistry analysis of paraffin-embedded human liver carcinoma tissue, using GIPR Antibody. The picture on the right is blocked with the synthesized peptide.

Nanjing BYabscience technology Co.,Ltd



Western blot analysis of the lysates from HT-29 cells using GIPR antibody.