



GDF-9 Polyclonal Antibody

Catalog No	BYab-15916
Isotype	IgG
Reactivity	Human;Rat;Mouse;
Applications	WB;IHC;IF;ELISA
Gene Name	GDF9
Protein Name	Growth/differentiation factor 9
Immunogen	The antiserum was produced against synthesized peptide derived from human GDF-9. AA range:273-322
Specificity	GDF-9 Polyclonal Antibody detects endogenous levels of GDF-9 protein.
Formulation	Liquid in PBS containing 50% glycerol, 0.5% BSA and 0.02% sodium azide.
Source	Polyclonal, Rabbit,IgG
Purification	The antibody was affinity-purified from rabbit antiserum by affinity-chromatography using epitope-specific immunogen.
Dilution	WB: 1/500 - 1/2000. IHC: 1/100 - 1/300. ELISA: 1/10000.. IF 1:50-200
Concentration	1 mg/ml
Purity	≥90%
Storage Stability	-20°C/1 year
Synonyms	GDF9; Growth/differentiation factor 9; GDF-9
Observed Band	57kD
Cell Pathway	Secreted .
Tissue Specificity	Expressed in ovarian granulosa cells. Present in oocytes of primary follicles (at protein level).
Function	function:Required for ovarian folliculogenesis.,similarity:Belongs to the TGF-beta family.,subunit:Homodimer or heterodimer (Potential). But, in contrast to other members of this family, cannot be disulfide-linked.,
Background	This gene encodes a secreted ligand of the TGF-beta (transforming growth factor-beta) superfamily of proteins. Ligands of this family bind various TGF-beta receptors leading to recruitment and activation of SMAD family transcription factors that regulate gene expression. The encoded preproprotein is proteolytically processed to generate each subunit of the disulfide-linked homodimer. This protein regulates ovarian function. Reduced expression of this gene may be associated with polycystic ovary syndrome and mutations in this

Nanjing BYabscience technology Co.,Ltd



gene may be more common in mothers of dizygotic twins. [provided by RefSeq, Jul 2016],

matters needing attention

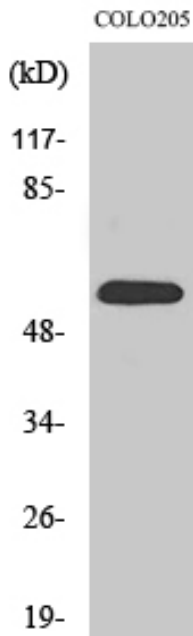
Avoid repeated freezing and thawing!

Usage suggestions

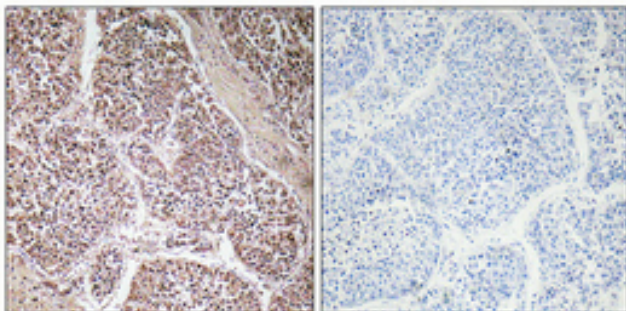
This product can be used in immunological reaction related experiments. For more information, please consult technical personnel.



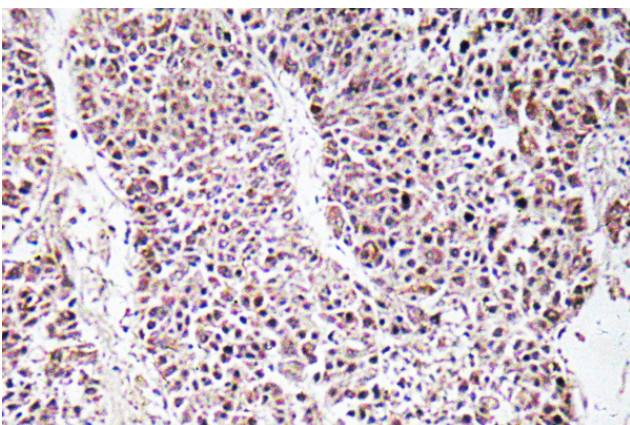
Products Images



Western Blot analysis of various cells using GDF-9 Polyclonal Antibody

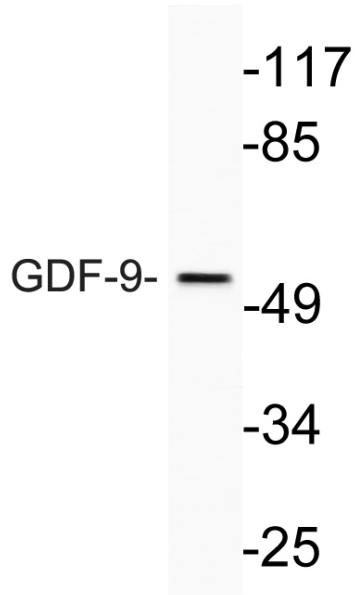


Immunohistochemical analysis of paraffin-embedded Human lung cancer. Antibody was diluted at 1:100(4° overnight). High-pressure and temperature Tris-EDTA,pH8.0 was used for antigen retrieval. Negative contrl (right) obtained from antibody was pre-absorbed by immunogen peptide.



Immunohistochemistry analysis of GDF-9 antibody in paraffin-embedded human liver carcinoma tissue.

Nanjing BYabscience technology Co.,Ltd



Western blot analysis of lysate from COLO205 cells, using GDF-9 antibody.