



# GDF-8 Polyclonal Antibody

<b>Catalog No</b>	BYab-15915
<b>Isotype</b>	IgG
<b>Reactivity</b>	Human;Mouse
<b>Applications</b>	WB;IHC;IF;ELISA
<b>Gene Name</b>	MSTN
<b>Protein Name</b>	Growth/differentiation factor 8
<b>Immunogen</b>	The antiserum was produced against synthesized peptide derived from human GDF-8. AA range:38-87
<b>Specificity</b>	GDF-8 Polyclonal Antibody detects endogenous levels of GDF-8 protein.
<b>Formulation</b>	Liquid in PBS containing 50% glycerol, 0.5% BSA and 0.02% sodium azide.
<b>Source</b>	Polyclonal, Rabbit,IgG
<b>Purification</b>	The antibody was affinity-purified from rabbit antiserum by affinity-chromatography using epitope-specific immunogen.
<b>Dilution</b>	IHC: 1/100 - 1/300. ELISA: 1/10000.. IF 1:50-200
<b>Concentration</b>	1 mg/ml
<b>Purity</b>	≥90%
<b>Storage Stability</b>	-20°C/1 year
<b>Synonyms</b>	MSTN; GDF8; Growth/differentiation factor 8; GDF-8; Myostatin
<b>Observed Band</b>	
<b>Cell Pathway</b>	Secreted .
<b>Tissue Specificity</b>	Colon,Muscle,Pericardium,Skeletal muscle,
<b>Function</b>	function:Acts specifically as a negative regulator of skeletal muscle growth.,online information:Myostatin entry,similarity:Belongs to the TGF-beta family.,subunit:Homodimer; disulfide-linked (By similarity). Interacts with WFIKKN2, leading to inhibit its activity.,
<b>Background</b>	myostatin(MSTN) Homo sapiens This gene encodes a secreted ligand of the TGF-beta (transforming growth factor-beta) superfamily of proteins. Ligands of this family bind various TGF-beta receptors leading to recruitment and activation of SMAD family transcription factors that regulate gene expression. The encoded preproprotein is proteolytically processed to generate each subunit of the disulfide-linked homodimer. This protein negatively regulates skeletal muscle cell

Nanjing BYabscience technology Co.,Ltd



proliferation and differentiation. Mutations in this gene are associated with increased skeletal muscle mass in humans and other mammals. [provided by RefSeq, Jul 2016],

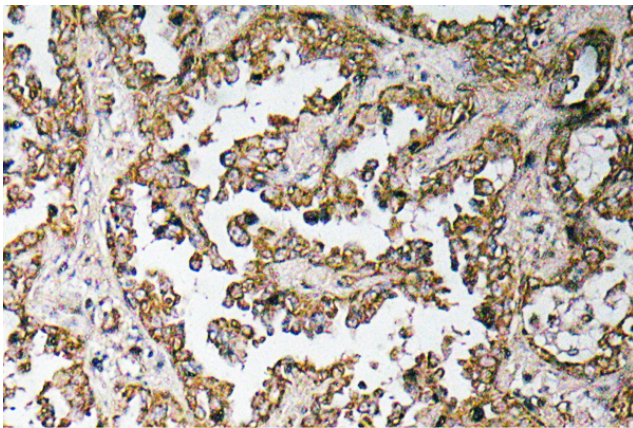
**matters needing attention**

Avoid repeated freezing and thawing!

**Usage suggestions**

This product can be used in immunological reaction related experiments. For more information, please consult technical personnel.

**Products Images**



Immunohistochemistry analysis of GDF-8 antibody in paraffin-embedded human lung carcinoma tissue.