



Ephrin-A4 Polyclonal Antibody

Catalog No	BYab-15901
Isotype	IgG
Reactivity	Human;Mouse
Applications	WB;ELISA
Gene Name	EFNA4
Protein Name	Ephrin-A4
Immunogen	The antiserum was produced against synthesized peptide derived from human EFNA4. AA range:131-180
Specificity	Ephrin-A4 Polyclonal Antibody detects endogenous levels of Ephrin-A4 protein.
Formulation	Liquid in PBS containing 50% glycerol, 0.5% BSA and 0.02% sodium azide.
Source	Polyclonal, Rabbit,IgG
Purification	The antibody was affinity-purified from rabbit antiserum by affinity-chromatography using epitope-specific immunogen.
Dilution	Western Blot: 1/500 - 1/2000. ELISA: 1/40000. Not yet tested in other applications.
Concentration	1 mg/ml
Purity	≥90%
Storage Stability	-20°C/1 year
Synonyms	EFNA4; EPLG4; LERK4; Ephrin-A4; EPH-related receptor tyrosine kinase ligand 4; LERK-4
Observed Band	95kD
Cell Pathway	[Isoform 1]: Cell membrane; Lipid-anchor, GPI-anchor.; [Isoform 2]: Secreted .
Tissue Specificity	Expressed in the adult spleen, lymph node, prostate, ovary, small intestine, and colon, and in fetal heart, lung, liver and kidney. Also detected in hematopoietic cell lines.
Function	function:May play a role in the interaction between activated B lymphocytes and dendritic cells in tonsils.,similarity:Belongs to the ephrin family.,tissue specificity:Expressed in the adult spleen, lymph node, prostate, ovary, small intestine, and colon, and in fetal heart, lung, liver and kidney. Also detected in hematopoietic cell lines.,
Background	This gene encodes a member of the ephrin (EPH) family. The ephrins and EPH-related receptors comprise the largest subfamily of receptor protein-tyrosine kinases and have been implicated in mediating developmental events, especially

Nanjing BYabscience technology Co.,Ltd



in the nervous system and in erythropoiesis. Based on their structures and sequence relationships, ephrins are divided into the ephrin-A (EFNA) class, which are anchored to the membrane by a glycosylphosphatidylinositol linkage, and the ephrin-B (EFNB) class, which are transmembrane proteins. This gene encodes an EFNA class ephrin. Three transcript variants that encode distinct proteins have been identified. [provided by RefSeq, Jul 2008],

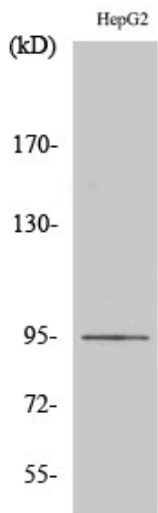
matters needing attention

Avoid repeated freezing and thawing!

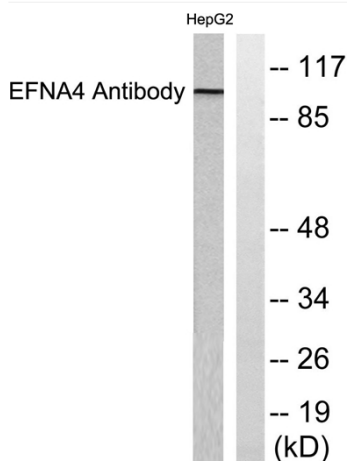
Usage suggestions

This product can be used in immunological reaction related experiments. For more information, please consult technical personnel.

Products Images



Western Blot analysis of various cells using Ephrin-A4 Polyclonal Antibody diluted at 1:500



Western blot analysis of lysates from HepG2 cells, using EFNA4 Antibody. The lane on the right is blocked with the synthesized peptide.