



EGFL4 Polyclonal Antibody

Catalog No	BYab-15896
Isotype	IgG
Reactivity	Human;Rat;Mouse;
Applications	WB;IHC;IF;ELISA
Gene Name	MEGF8
Protein Name	Multiple epidermal growth factor-like domains protein 8
Immunogen	The antiserum was produced against synthesized peptide derived from human MEGF8. AA range:1243-1292
Specificity	EGFL4 Polyclonal Antibody detects endogenous levels of EGFL4 protein.
Formulation	Liquid in PBS containing 50% glycerol, 0.5% BSA and 0.02% sodium azide.
Source	Polyclonal, Rabbit,IgG
Purification	The antibody was affinity-purified from rabbit antiserum by affinity-chromatography using epitope-specific immunogen.
Dilution	WB: 1/500 - 1/2000. IHC: 1/100 - 1/300. ELISA: 1/20000.. IF 1:50-200
Concentration	1 mg/ml
Purity	≥90%
Storage Stability	-20°C/1 year
Synonyms	MEGF8; C19orf49; EGFL4; KIAA0817; Multiple epidermal growth factor-like domains protein 8; Multiple EGF-like domains protein 8; Epidermal growth factor-like protein 4; EGF-like protein 4
Observed Band	255kD
Cell Pathway	Membrane ; Single-pass type I membrane protein .
Tissue Specificity	Brain,Pancreas,Plasma,
Function	similarity:Contains 12 Kelch repeats.,similarity:Contains 2 CUB domains.,similarity:Contains 4 laminin EGF-like domains.,similarity:Contains 5 EGF-like domains.,similarity:Contains 7 PSI domains.,
Background	The protein encoded by this gene is a single-pass type I membrane protein of unknown function that contains several EGF-like domains, Kelch repeats, and PSI domains. Defects in this gene are a cause of Carpenter syndrome 2. Two transcript variants encoding different isoforms have been found for this gene. [provided by RefSeq, Dec 2012],

Nanjing BYabscience technology Co.,Ltd



matters needing attention

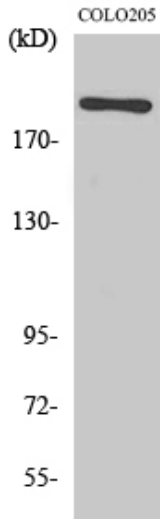
Avoid repeated freezing and thawing!

Usage suggestions

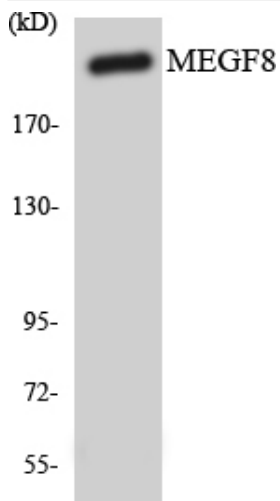
This product can be used in immunological reaction related experiments. For more information, please consult technical personnel.



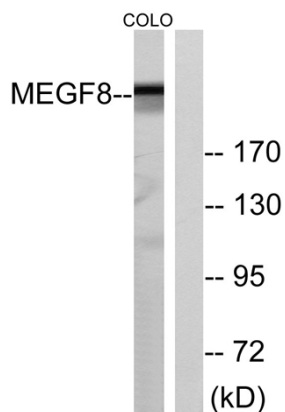
Products Images



Western Blot analysis of various cells using EGFL4 Polyclonal Antibody



Western blot analysis of lysates from COLO cells, using MEGF8 Antibody. The lane on the right is blocked with the synthesized peptide.



Western blot analysis of the lysates from COLO205 cells using MEGF8 antibody.