



# DAN Polyclonal Antibody

<b>Catalog No</b>	BYab-15895
<b>Isotype</b>	IgG
<b>Reactivity</b>	Human;Rat;Mouse;
<b>Applications</b>	WB;IHC;IF;ELISA
<b>Gene Name</b>	NBL1
<b>Protein Name</b>	Neuroblastoma suppressor of tumorigenicity 1
<b>Immunogen</b>	The antiserum was produced against synthesized peptide derived from human NBL1. AA range:131-180
<b>Specificity</b>	DAN Polyclonal Antibody detects endogenous levels of DAN protein.
<b>Formulation</b>	Liquid in PBS containing 50% glycerol, 0.5% BSA and 0.02% sodium azide.
<b>Source</b>	Polyclonal, Rabbit,IgG
<b>Purification</b>	The antibody was affinity-purified from rabbit antiserum by affinity-chromatography using epitope-specific immunogen.
<b>Dilution</b>	Western Blot: 1/500 - 1/2000. Immunohistochemistry: 1/100 - 1/300. Immunofluorescence: 1/200 - 1/1000. ELISA: 1/20000. Not yet tested in other applications.
<b>Concentration</b>	1 mg/ml
<b>Purity</b>	≥90%
<b>Storage Stability</b>	-20°C/1 year
<b>Synonyms</b>	NBL1; DAN; DAND1; Neuroblastoma suppressor of tumorigenicity 1; DAN domain family member 1; Protein N03; Zinc finger protein DAN
<b>Observed Band</b>	19kD
<b>Cell Pathway</b>	Secreted.
<b>Tissue Specificity</b>	Most abundant in normal lung and meningioma.
<b>Function</b>	disease:Defects in NBL1 are possibly the cause of the development and/or progression of human neuroblastoma.,function:Possible candidate as a tumor suppressor gene of neuroblastoma. May play an important role in preventing cells from entering the final stage (G1/S) of the transformation process.,similarity:Belongs to the DAN family.,similarity:Contains 1 CTCK (C-terminal cystine knot-like) domain.,tissue specificity:Most abundant in normal lung and meningioma.,

Nanjing BYabscience technology Co.,Ltd

**Background**

This gene product is the founding member of the evolutionarily conserved CAN (Cerberus and DAN) family of proteins, which contain a domain resembling the CTCK (C-terminal cystine knot-like) motif found in a number of signaling molecules. These proteins are secreted, and act as BMP (bone morphogenetic protein) antagonists by binding to BMPs and preventing them from interacting with their receptors. They may thus play an important role during growth and development. Alternatively spliced transcript variants have been identified for this gene. Read-through transcripts between this locus and the upstream mitochondrial inner membrane organizing system 1 gene (GeneID 440574) have been observed. [provided by RefSeq, May 2013],

**matters needing attention**

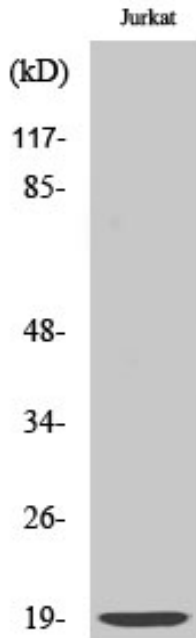
Avoid repeated freezing and thawing!

**Usage suggestions**

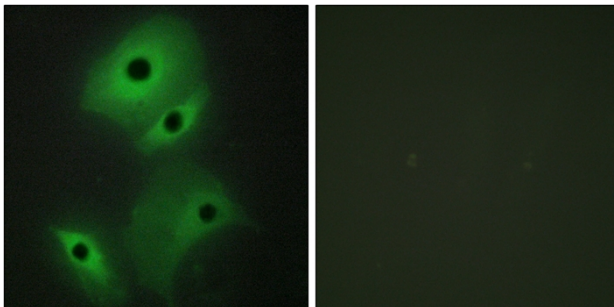
This product can be used in immunological reaction related experiments. For more information, please consult technical personnel.



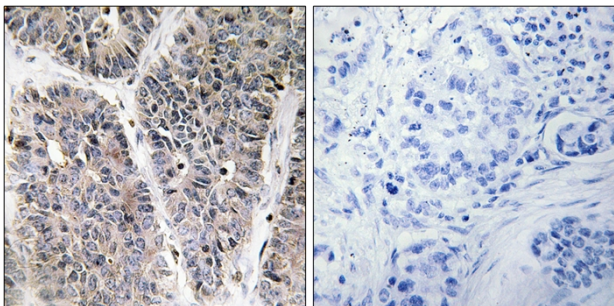
## Products Images



Western Blot analysis of various cells using DAN Polyclonal Antibody diluted at 1:500

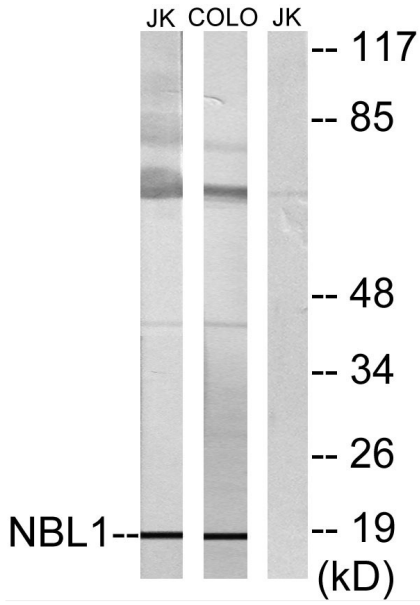


Immunofluorescence analysis of HeLa cells, using NBL1 Antibody. The picture on the right is blocked with the synthesized peptide.



Immunohistochemistry analysis of paraffin-embedded human lung carcinoma tissue, using NBL1 Antibody. The picture on the right is blocked with the synthesized peptide.

Nanjing BYabscience technology Co.,Ltd



Western blot analysis of lysates from Jurkat and COLO cells, using NBL1 Antibody. The lane on the right is blocked with the synthesized peptide.