



# Choriogonadotropin $\beta$ Polyclonal Antibody

<b>Catalog No</b>	BYab-15887
<b>Isotype</b>	IgG
<b>Reactivity</b>	Human;Rat;Mouse;
<b>Applications</b>	WB;IHC;IF;ELISA
<b>Gene Name</b>	CGB
<b>Protein Name</b>	Choriogonadotropin subunit beta
<b>Immunogen</b>	The antiserum was produced against synthesized peptide derived from human hCG beta. AA range:101-150
<b>Specificity</b>	Choriogonadotropin $\beta$ Polyclonal Antibody detects endogenous levels of Choriogonadotropin $\beta$ protein.
<b>Formulation</b>	Liquid in PBS containing 50% glycerol, 0.5% BSA and 0.02% sodium azide.
<b>Source</b>	Polyclonal, Rabbit,IgG
<b>Purification</b>	The antibody was affinity-purified from rabbit antiserum by affinity-chromatography using epitope-specific immunogen.
<b>Dilution</b>	WB: 1/500 - 1/2000. IHC: 1/100 - 1/300. ELISA: 1/10000.. IF 1:50-200
<b>Concentration</b>	1 mg/ml
<b>Purity</b>	$\geq 90\%$
<b>Storage Stability</b>	-20°C/1 year
<b>Synonyms</b>	CGB; CGB3; CGB5; CGB7; CGB8; Choriogonadotropin subunit beta; CG-beta; Chorionic gonadotrophin chain beta
<b>Observed Band</b>	20kD
<b>Cell Pathway</b>	extracellular region,
<b>Tissue Specificity</b>	Brain,Placenta,
<b>Function</b>	developmental stage:Made by the first trimester placenta.,function:Stimulates the ovaries to synthesize the steroids that are essential for the maintenance of pregnancy.,online information:Chorionic gonadotropin entry,pharmaceutical:Available under the names Novarel (Ferring) and Profasi (Serono). Used as adjunctive therapy in the treatment of obesity. There is no substantial evidence that it increases weight loss beyond that resulting from caloric restriction, that it causes a more attractive or 'normal' distribution of fat, or that it decreases the hunger and discomfort associated with calorie-restricted diets.,similarity:Belongs to the glycoprotein hormones subunit beta family.,subunit:Heterodimer of a common alpha chain and a unique beta chain

Nanjing BYabscience technology Co.,Ltd



which confers biological specificity to thyrotropin, lutropin, follitropin and gonadotropin.,tissue specificity:Placenta.,

**Background**

This gene is a member of the glycoprotein hormone beta chain family and encodes the beta 3 subunit of chorionic gonadotropin (CG). Glycoprotein hormones are heterodimers consisting of a common alpha subunit and an unique beta subunit which confers biological specificity. CG is produced by the trophoblastic cells of the placenta and stimulates the ovaries to synthesize the steroids that are essential for the maintenance of pregnancy. The beta subunit of CG is encoded by 6 genes which are arranged in tandem and inverted pairs on chromosome 19q13.3 and contiguous with the luteinizing hormone beta subunit gene. [provided by RefSeq, Jul 2008],

**matters needing attention**

Avoid repeated freezing and thawing!

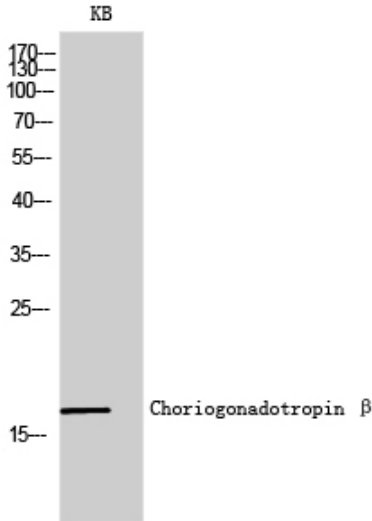
**Usage suggestions**

This product can be used in immunological reaction related experiments. For more information, please consult technical personnel.

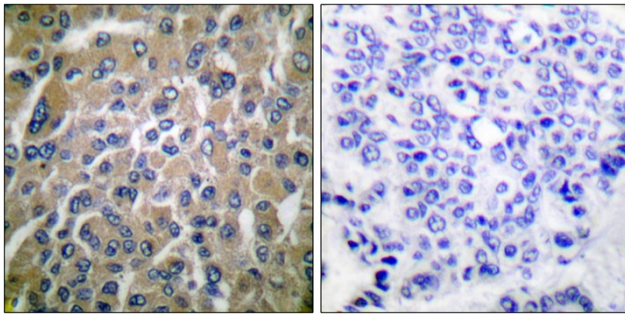
Nanjing BYabscience technology Co.,Ltd



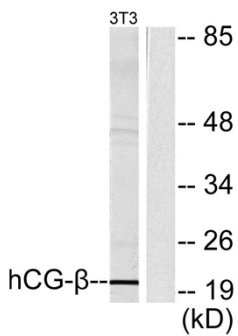
## Products Images



Western Blot analysis of KB cells using Choriogonadotropin  $\beta$  Polyclonal Antibody diluted at 1:2000



Immunohistochemistry analysis of paraffin-embedded human breast carcinoma tissue, using hCG beta Antibody. The picture on the right is blocked with the synthesized peptide.



Western blot analysis of lysates from NIH/3T3 cells, using hCG beta Antibody. The lane on the right is blocked with the synthesized peptide.