



# CCK Polyclonal Antibody

<b>Catalog No</b>	BYab-15885
<b>Isotype</b>	IgG
<b>Reactivity</b>	Human;Mouse;Rat
<b>Applications</b>	IHC;IF;ELISA
<b>Gene Name</b>	CCK
<b>Protein Name</b>	Cholecystokinin
<b>Immunogen</b>	The antiserum was produced against synthesized peptide derived from human CCK. AA range:46-95
<b>Specificity</b>	CCK Polyclonal Antibody detects endogenous levels of CCK protein.
<b>Formulation</b>	Liquid in PBS containing 50% glycerol, 0.5% BSA and 0.02% sodium azide.
<b>Source</b>	Polyclonal, Rabbit,IgG
<b>Purification</b>	The antibody was affinity-purified from rabbit antiserum by affinity-chromatography using epitope-specific immunogen.
<b>Dilution</b>	IHC: 1/100 - 1/300. ELISA: 1/20000.. IF 1:50-200
<b>Concentration</b>	1 mg/ml
<b>Purity</b>	≥90%
<b>Storage Stability</b>	-20°C/1 year
<b>Synonyms</b>	CCK; Cholecystokinin; CCK
<b>Observed Band</b>	
<b>Cell Pathway</b>	Secreted.
<b>Tissue Specificity</b>	Brain,Pancreas,
<b>Function</b>	function:This peptide hormone induces gall bladder contraction and the release of pancreatic enzymes in the gut. Its function in the brain is not clear. Binding to CCK-A receptors stimulates amylase release from the pancreas, binding to CCK-B receptors stimulates gastric acid secretion.,online information:Cholecystokinin entry,PTM:The precursor is cleaved by proteases to produce a number of active cholecystokinins.,similarity:Belongs to the gastrin/cholecystokinin family.,subunit:Binds to CCK-A receptors in the pancreas and CCK-B receptors in the brain.,
<b>Background</b>	This gene encodes a member of the gastrin/cholecystokinin family of proteins. The encoded preproprotein is proteolytically processed to generate multiple

Nanjing BYabscience technology Co.,Ltd



protein products, including the peptide hormones cholecystokinin-8, -12, -33, and others. The encoded peptides have been shown to regulate gastric acid secretion and food intake. A sulfated form of cholecystokinin-8 may modulate neuronal activity in the brain. Alternative splicing results in multiple transcript variants. [provided by RefSeq, Nov 2015],

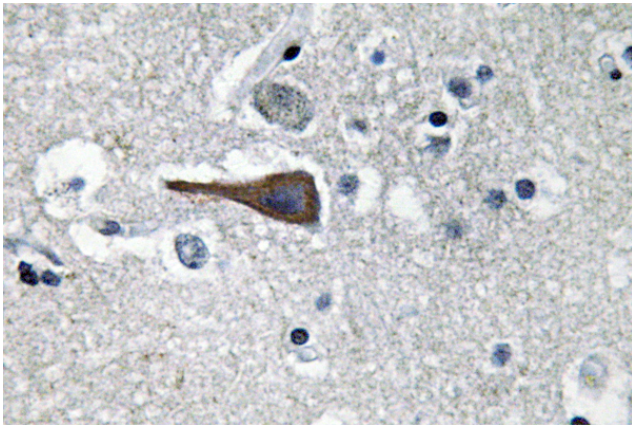
**matters needing attention**

Avoid repeated freezing and thawing!

**Usage suggestions**

This product can be used in immunological reaction related experiments. For more information, please consult technical personnel.

## Products Images



Immunohistochemistry analysis of CCK antibody in paraffin-embedded human brain tissue.