



BMP-7 Polyclonal Antibody

Catalog No	BYab-15880
Isotype	IgG
Reactivity	Human;Mouse;Rat
Applications	WB;IHC;IF;ELISA
Gene Name	BMP7
Protein Name	Bone morphogenetic protein 7
Immunogen	The antiserum was produced against synthesized peptide derived from human BMP-7. AA range:124-173
Specificity	BMP-7 Polyclonal Antibody detects endogenous levels of BMP-7 protein.
Formulation	Liquid in PBS containing 50% glycerol, 0.5% BSA and 0.02% sodium azide.
Source	Polyclonal, Rabbit,IgG
Purification	The antibody was affinity-purified from rabbit antiserum by affinity-chromatography using epitope-specific immunogen.
Dilution	WB: 1/500 - 1/2000. IHC: 1/100 - 1/300. ELISA: 1/40000.. IF 1:50-200
Concentration	1 mg/ml
Purity	≥90%
Storage Stability	-20°C/1 year
Synonyms	BMP7; OP1; Bone morphogenetic protein 7; BMP-7; Osteogenic protein 1; OP-1; Eptotermin alfa
Observed Band	55kD
Cell Pathway	Secreted.
Tissue Specificity	Expressed in the kidney and bladder. Lower levels seen in the brain.
Function	function:Induces cartilage and bone formation. May be the osteoinductive factor responsible for the phenomenon of epithelial osteogenesis. Plays a role in calcium regulation and bone homeostasis.,online information:Bone morphogenetic protein 7 entry,pharmaceutical:Available under the names Osigraft (Stryker). Its use is indicated in the treatment of tibial non-union of at least 9 month duration, secondary to trauma, in skeletally mature patients, in cases where autograft has failed or is unfeasible.,PTM:Several N-termini starting at positions 293, 300, 315 and 316 have been identified by direct sequencing resulting in secretion of different mature forms (PubMed:17977014).,similarity:Belongs to the TGF-beta

Nanjing BYabscience technology Co.,Ltd



family.,subunit:Homodimer; disulfide-linked. Interacts with SOSTDC1. Interacts with TWSG1.,tissue specificity:Expressed in the kidneys and bladder. Lower levels seen in the brain.,

Background

This gene encodes a secreted ligand of the TGF-beta (transforming growth factor-beta) superfamily of proteins. Ligands of this family bind various TGF-beta receptors leading to recruitment and activation of SMAD family transcription factors that regulate gene expression. The encoded preproprotein is proteolytically processed to generate each subunit of the disulfide-linked homodimer, which plays a role in bone, kidney and brown adipose tissue development. Additionally, this protein induces ectopic bone formation and may promote fracture healing in human patients. [provided by RefSeq, Jul 2016],

matters needing attention

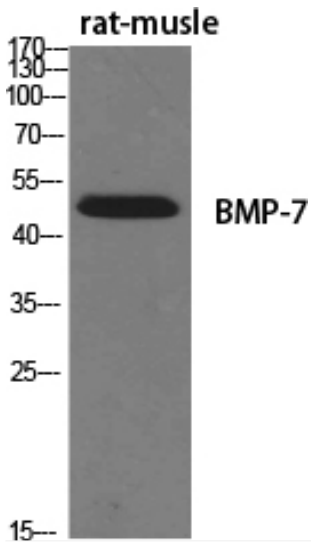
Avoid repeated freezing and thawing!

Usage suggestions

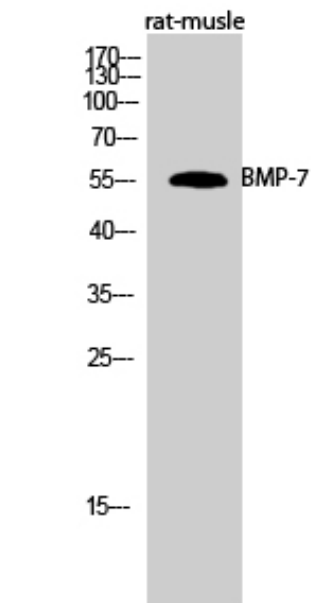
This product can be used in immunological reaction related experiments. For more information, please consult technical personnel.



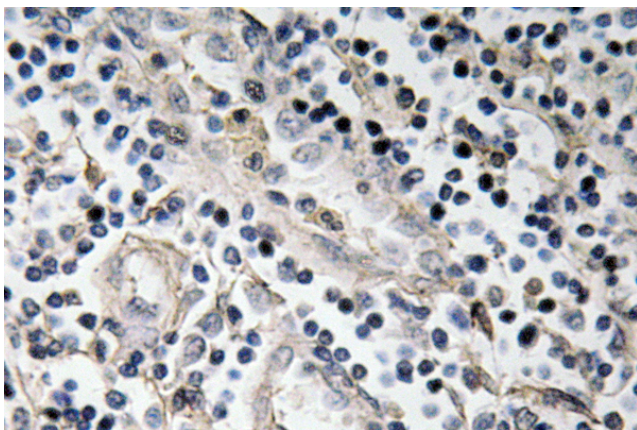
Products Images



Western Blot analysis of various cells using BMP-7 Polyclonal Antibody diluted at 1:500

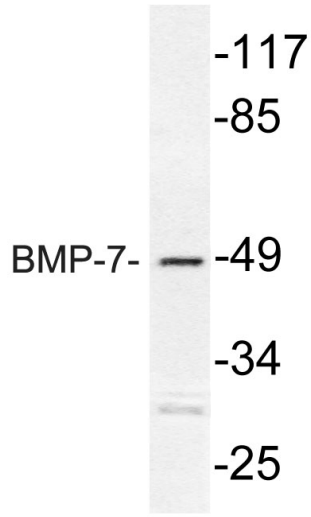


Western Blot analysis of rat-muscle cells using BMP-7 Polyclonal Antibody diluted at 1:500



Immunohistochemistry analysis of BMP-7 antibody in paraffin-embedded human tonsil tissue.

Nanjing BYabscience technology Co.,Ltd



Western blot analysis of lysate from Jurkat cells, using BMP-7 antibody.