



ALS Polyclonal Antibody

Catalog No	BYab-15872
Isotype	IgG
Reactivity	Human;Rat;Mouse;
Applications	WB;ELISA
Gene Name	IGFALS
Protein Name	Insulin-like growth factor-binding protein complex acid labile subunit
Immunogen	The antiserum was produced against synthesized peptide derived from human IGFALS. AA range:303-352
Specificity	ALS Polyclonal Antibody detects endogenous levels of ALS protein.
Formulation	Liquid in PBS containing 50% glycerol, 0.5% BSA and 0.02% sodium azide.
Source	Polyclonal, Rabbit,IgG
Purification	The antibody was affinity-purified from rabbit antiserum by affinity-chromatography using epitope-specific immunogen.
Dilution	Western Blot: 1/500 - 1/2000. ELISA: 1/10000. Not yet tested in other applications.
Concentration	1 mg/ml
Purity	≥90%
Storage Stability	-20°C/1 year
Synonyms	IGFALS; ALS; Insulin-like growth factor-binding protein complex acid labile subunit; ALS
Observed Band	66kD
Cell Pathway	Secreted, extracellular space.
Tissue Specificity	Plasma.
Function	function:Involved in protein-protein interactions that result in protein complexes, receptor-ligand binding or cell adhesion.,similarity:Contains 20 LRR (leucine-rich) repeats.,subunit:Forms a ternary complex of about 140 to 150 kDa with IGF-I or IGF-II and IGFBP-3.,tissue specificity:Plasma.,
Background	The protein encoded by this gene is a serum protein that binds insulin-like growth factors, increasing their half-life and their vascular localization. Production of the encoded protein, which contains twenty leucine-rich repeats, is stimulated by growth hormone. Defects in this gene are a cause of acid-labile subunit deficiency, which manifests itself in a delayed and slow puberty. Three transcript

Nanjing BYabscience technology Co.,Ltd



variants encoding two different isoforms have been found for this gene. [provided by RefSeq, Mar 2009],

matters needing attention

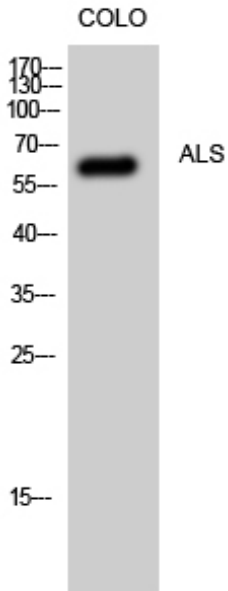
Avoid repeated freezing and thawing!

Usage suggestions

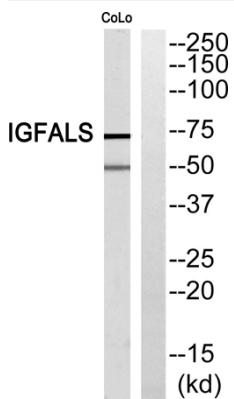
This product can be used in immunological reaction related experiments. For more information, please consult technical personnel.



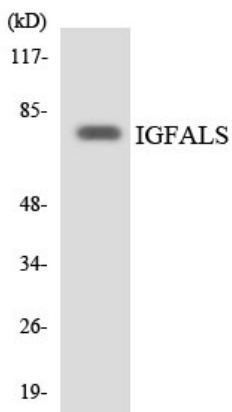
Products Images



Western Blot analysis of CoLo cells using ALS Polyclonal Antibody



Western blot analysis of IGFALS Antibody. The lane on the right is blocked with the IGFALS peptide.



Western blot analysis of the lysates from RAW264.7 cells using IGFALS antibody.