



Cerberus Monoclonal Antibody

Catalog No	BYab-15826
Isotype	IgG
Reactivity	Human
Applications	WB;IHC;IF;ELISA
Gene Name	CER1
Protein Name	Cerberus
Immunogen	Purified recombinant fragment of human Cerberus expressed in E. Coli.
Specificity	Cerberus Monoclonal Antibody detects endogenous levels of Cerberus protein.
Formulation	Ascitic fluid containing 0.03% sodium azide,0.5% BSA, 50%glycerol.
Source	Monoclonal, Mouse
Purification	Affinity purification
Dilution	WB: 1/500 - 1/2000. IHC: 1/200 - 1/1000. ELISA: 1/10000.. IF 1:50-200
Concentration	1 mg/ml
Purity	≥90%
Storage Stability	-20°C/1 year
Synonyms	CER1; DAND4; Cerberus; Cerberus-related protein; DAN domain family member 4
Observed Band	
Cell Pathway	Secreted .
Tissue Specificity	Blood,PCR rescued clones,
Function	function:Cytokine that may play a role in anterior neural induction and somite formation during embryogenesis in part through a BMP-inhibitory mechanism. Can regulate Nodal signaling during gastrulation as well as the formation and patterning of the primitive streak.,PTM:N-glycosylated.,sequence caution:Translated as Ser.,similarity:Belongs to the DAN family.,similarity:Contains 1 CTCK (C-terminal cystine knot-like) domain.,subunit:Forms monomers and predominantly dimers.,
Background	This gene encodes a cytokine member of the cysteine knot superfamily, characterized by nine conserved cysteines and a cysteine knot region. The cerberus-related cytokines, together with Dan and DRM/Gremlin, represent a group of bone morphogenetic protein (BMP) antagonists that can bind directly to

Nanjing BYabscience technology Co.,Ltd



BMPs and inhibit their activity. [provided by RefSeq, Jul 2008],

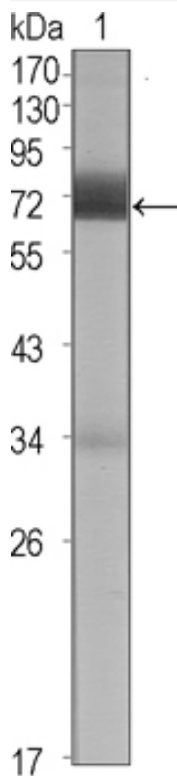
matters needing attention

Avoid repeated freezing and thawing!

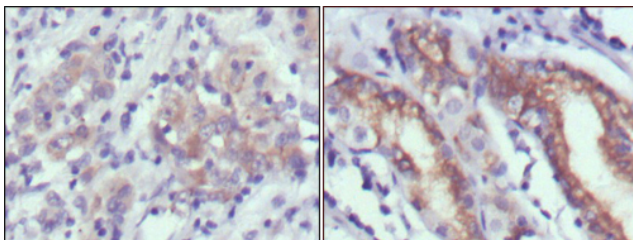
Usage suggestions

This product can be used in immunological reaction related experiments. For more information, please consult technical personnel.

Products Images



Western Blot analysis using Cerberus Monoclonal Antibody against CER1 (aa18-267)-hlgGfc transfected HEK293 cell lysate (1).



Immunohistochemistry analysis of paraffin-embedded human gastric cancer (left) and normal gastric tissues (right) with DAB staining using Cerberus Monoclonal Antibody.