



ITIH4 (80k, Cleaved-Arg689) rabbit pAb

Catalog No	BYab-15818
Isotype	IgG
Reactivity	Human;Rat;Mouse;
Applications	WB;IHC
Gene Name	ITIH4 IHRP ITIHL1 PK120 PRO1851
Protein Name	ITIH4 (80k, Cleaved-Arg689)
Immunogen	Synthesized peptide derived from human ITIH4 (80k, Cleaved-Arg689)
Specificity	This antibody detects endogenous levels of Human ITIH4 (80k, Cleaved-Arg689)
Formulation	Liquid in PBS containing 50% glycerol, 0.5% BSA and 0.02% sodium azide.
Source	Polyclonal, Rabbit,IgG
Purification	The antibody was affinity-purified from rabbit serum by affinity-chromatography using specific immunogen.
Dilution	WB 1:500-2000;IHC-p 1:50-300
Concentration	1 mg/ml
Purity	≥90%
Storage Stability	-20°C/1 year
Synonyms	Inter-alpha-trypsin inhibitor heavy chain H4 (ITI heavy chain H4;ITI-HC4;Inter-alpha-inhibitor heavy chain 4;Inter-alpha-trypsin inhibitor family heavy chain-related protein;IHRP;Plasma kallikrein sensitive glycoprotein 120;Gp120;PK-120) [Cleaved into: 70 kDa inter-alpha-trypsin inhibitor heavy chain H4; 35 kDa inter-alpha-trypsin inhibitor heavy chain H4]
Observed Band	80 100kD
Cell Pathway	Secreted.
Tissue Specificity	Liver specific.
Function	ERROR 23
Background	ERROR 23

Nanjing BYabscience technology Co.,Ltd



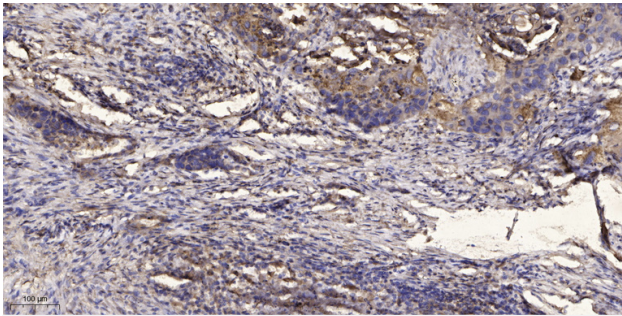
matters needing attention

Avoid repeated freezing and thawing!

Usage suggestions

This product can be used in immunological reaction related experiments. For more information, please consult technical personnel.

Products Images



Immunohistochemical analysis of paraffin-embedded human Squamous cell carcinoma of lung. 1, Antibody was diluted at 1:200(4° overnight). 2, Tris-EDTA,pH9.0 was used for antigen retrieval. 3,Secondary antibody was diluted at 1:200(room temperature, 45min).