



Cleaved-ITI-H1 (D672) Polyclonal Antibody

Catalog No	BYab-15815
Isotype	IgG
Reactivity	Human;Mouse
Applications	WB;ELISA
Gene Name	ITIH1
Protein Name	Inter-alpha-trypsin inhibitor heavy chain H1
Immunogen	The antiserum was produced against synthesized peptide derived from human ITIH1. AA range:623-672
Specificity	Cleaved-ITI-H1 (D672) Polyclonal Antibody detects endogenous levels of fragment of activated ITI-H1 protein resulting from cleavage adjacent to D672.
Formulation	Liquid in PBS containing 50% glycerol, 0.5% BSA and 0.02% sodium azide.
Source	Polyclonal, Rabbit,IgG
Purification	The antibody was affinity-purified from rabbit antiserum by affinity-chromatography using epitope-specific immunogen.
Dilution	Western Blot: 1/500 - 1/2000. ELISA: 1/20000. Not yet tested in other applications.
Concentration	1 mg/ml
Purity	≥90%
Storage Stability	-20°C/1 year
Synonyms	ITIH1; IGHEP1; Inter-alpha-trypsin inhibitor heavy chain H1; ITI heavy chain H1; ITI-HC1; Inter-alpha-inhibitor heavy chain 1; Inter-alpha-trypsin inhibitor complex component III; Serum-derived hyaluronan-associated protein; SHAP
Observed Band	71kD
Cell Pathway	Secreted.
Tissue Specificity	Blood,Epithelium,Liver,Plasma,Serum,Thymus,
Function	function:Contains a potential peptide which could stimulate a broad spectrum of phagocytotic cells.,function:May act as a carrier of hyaluronan in serum or as a binding protein between hyaluronan and other matrix protein, including those on cell surfaces in tissues to regulate the localization, synthesis and degradation of hyaluronan which are essential to cells undergoing biological processes.,mass spectrometry: PubMed:9677337,polymorphism:There are 3 common alleles; ITIH1*1 with Glu-585/Gln-595, ITIH1*2 with Val-585/Arg-595 and ITIH1*3 with Glu-585/Arg-595.,PTM:Heavy chains are linked to bikunin via chondroitin

Nanjing BYabscience technology Co.,Ltd



4-sulfate esterified to the alpha-carboxyl of the C-terminal aspartate after propeptide cleavage.,PTM:The S-linked glycan is composed of two units of either Glc or Gal.,similarity:Belongs to the ITIH family.,similarity:Contains 1 VWFA domain.,subunit:I-alpha-I plasma protease in

Background

This gene encodes a member of the inter-alpha-trypsin inhibitor family of proteins. Alternative splicing results in multiple transcript variants, at least one of which encodes a preprotein that is proteolytically processed to generate the heavy chain of the inter-alpha-trypsin inhibitor complex, which is secreted by hepatocytes into the blood. The heavy chain also interacts with hyaluronan, and this interaction may play a role in ovulation and fertilization, and has been implicated in multiple inflammatory diseases. This gene is present in a gene cluster on chromosome 3. [provided by RefSeq, Nov 2015],

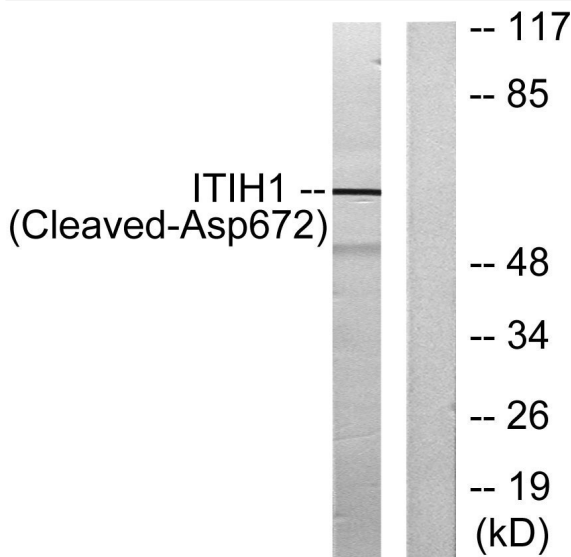
matters needing attention

Avoid repeated freezing and thawing!

Usage suggestions

This product can be used in immunological reaction related experiments. For more information, please consult technical personnel.

Products Images



Western blot analysis of lysates from Jurkat cells, treated with etoposide 25uM 24h, using ITIH1 (Cleaved-Asp672) Antibody. The lane on the right is blocked with the synthesized peptide.