



Cleaved-Ephrin-A2 (N188) Polyclonal Antibody

Catalog No	BYab-15812
Isotype	IgG
Reactivity	Human;Mouse
Applications	WB;ELISA
Gene Name	EFNA2
Protein Name	Ephrin-A2
Immunogen	The antiserum was produced against synthesized peptide derived from human EFNA2. AA range:139-188
Specificity	Cleaved-Ephrin-A2 (N188) Polyclonal Antibody detects endogenous levels of fragment of activated Ephrin-A2 protein resulting from cleavage adjacent to N188.
Formulation	Liquid in PBS containing 50% glycerol, 0.5% BSA and 0.02% sodium azide.
Source	Polyclonal, Rabbit,IgG
Purification	The antibody was affinity-purified from rabbit antiserum by affinity-chromatography using epitope-specific immunogen.
Dilution	Western Blot: 1/500 - 1/2000. ELISA: 1/20000. Not yet tested in other applications.
Concentration	1 mg/ml
Purity	≥90%
Storage Stability	-20°C/1 year
Synonyms	EFNA2; EPLG6; LERK6; Ephrin-A2; EPH-related receptor tyrosine kinase ligand 6; LERK-6; HEK7 ligand; HEK7-L
Observed Band	21kD
Cell Pathway	Cell membrane ; Lipid-anchor, GPI-anchor .
Tissue Specificity	Brain,
Function	similarity:Belongs to the ephrin family.,subunit:Binds to the receptor tyrosine kinases EPHA3, EPHA4 and EPHA5.,
Background	This gene encodes a member of the ephrin family. The protein is composed of a signal sequence, a receptor-binding region, a spacer region, and a hydrophobic region. The EPH and EPH-related receptors comprise the largest subfamily of receptor protein-tyrosine kinases and have been implicated in mediating developmental events, particularly in the nervous system. Based on their structures and sequence relationships, ephrins are divided into the ephrin-A (EFNA) class, which are anchored to the membrane by a

Nanjing BYabscience technology Co.,Ltd



glycosylphosphatidylinositol linkage, and the ephrin-B (EFNB) class, which are transmembrane proteins. Posttranslational modifications determine whether this protein localizes to the nucleus or the cytoplasm. [provided by RefSeq, Jul 2008],

matters needing attention

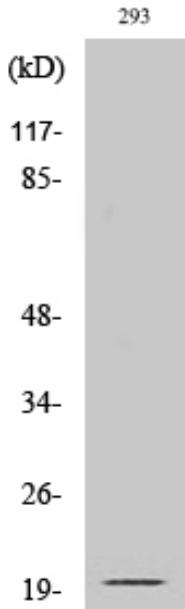
Avoid repeated freezing and thawing!

Usage suggestions

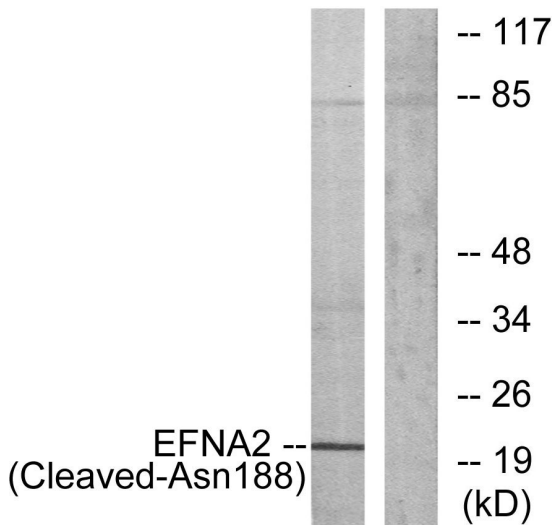
This product can be used in immunological reaction related experiments. For more information, please consult technical personnel.



Products Images



Western Blot analysis of various cells using Cleaved-Ephrin-A2 (N188) Polyclonal Antibody



Western blot analysis of lysates from 293 cells, treated with etoposide 25uM 1h, using EFNA2 (Cleaved-Asn188) Antibody. The lane on the right is blocked with the synthesized peptide.