



Pax-5 Polyclonal Antibody

Catalog No	BYab-15809
Isotype	IgG
Reactivity	Human;Mouse
Applications	WB;IHC;IF;ELISA
Gene Name	PAX5
Protein Name	Paired box protein Pax-5
Immunogen	The antiserum was produced against synthesized peptide derived from the Internal region of human PAX5. AA range:171-220
Specificity	Pax-5 Polyclonal Antibody detects endogenous levels of Pax-5 protein.
Formulation	Liquid in PBS containing 50% glycerol, 0.5% BSA and 0.02% sodium azide.
Source	Polyclonal, Rabbit,IgG
Purification	The antibody was affinity-purified from rabbit antiserum by affinity-chromatography using epitope-specific immunogen.
Dilution	WB: 1/500 - 1/2000. IHC-p: 1/100-1/300. ELISA: 1/20000.. IF 1:50-200
Concentration	1 mg/ml
Purity	≥90%
Storage Stability	-20°C/1 year
Synonyms	PAX5; Paired box protein Pax-5; B-cell-specific transcription factor; BSAP
Observed Band	42kD
Cell Pathway	Nucleus .
Tissue Specificity	Marginal zone lymphoma,
Function	developmental stage:Expressed at early B-cell differentiation, in the developing CNS and in adult testis.,disease:A chromosomal aberration involving PAX5 is a cause of acute lymphoblastic leukemia. Translocation t(9;18)(p13;q11.2) with ZNF521. Translocation t(9;3)(p13;p14.1) with FOXP1. Translocation t(9;12)(p13;p13) with ETV6.,function:May play an important role in B-cell differentiation as well as neural development and spermatogenesis. Involved in the regulation of the CD19 gene, a B-lymphoid-specific target gene.,PTM:O-glycosylated.,similarity:Contains 1 paired domain.,subunit:Interacts with DAXX (By similarity). Binds DNA as a monomer. Binds TLE4.,

Nanjing BYabscience technology Co.,Ltd

**Background**

This gene encodes a member of the paired box (PAX) family of transcription factors. The central feature of this gene family is a novel, highly conserved DNA-binding motif, known as the paired box. Paired box transcription factors are important regulators in early development, and alterations in the expression of their genes are thought to contribute to neoplastic transformation. This gene encodes the B-cell lineage specific activator protein that is expressed at early, but not late stages of B-cell differentiation. Its expression has also been detected in developing CNS and testis and so the encoded protein may also play a role in neural development and spermatogenesis. This gene is located at 9p13, which is involved in t(9;14)(p13;q32) translocations recurring in small lymphocytic lymphomas of the plasmacytoid subtype, and in derived large-cell lymphomas. This translocation brings the potent E-mu enhancer

matters needing attention

Avoid repeated freezing and thawing!

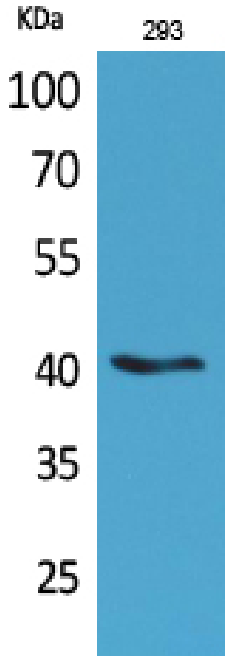
Usage suggestions

This product can be used in immunological reaction related experiments. For more information, please consult technical personnel.

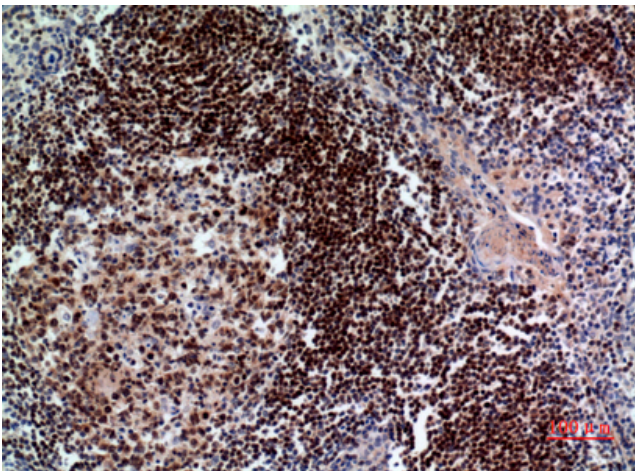
Nanjing BYabscience technology Co.,Ltd



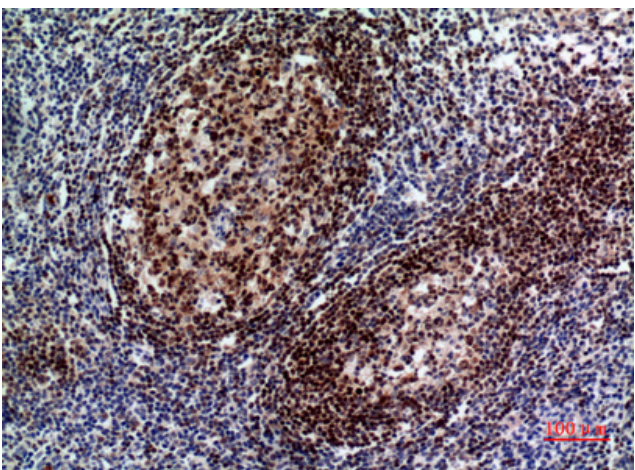
Products Images



Western Blot analysis of 293 cells using Pax-5 Polyclonal Antibody. Secondary antibody(catalog#:RS0002) was diluted at 1:20000 cells nucleus extracted by Minute TM Cytoplasmic and Nuclear Fractionation kit (SC-003, Inventbiotech, MN, USA).

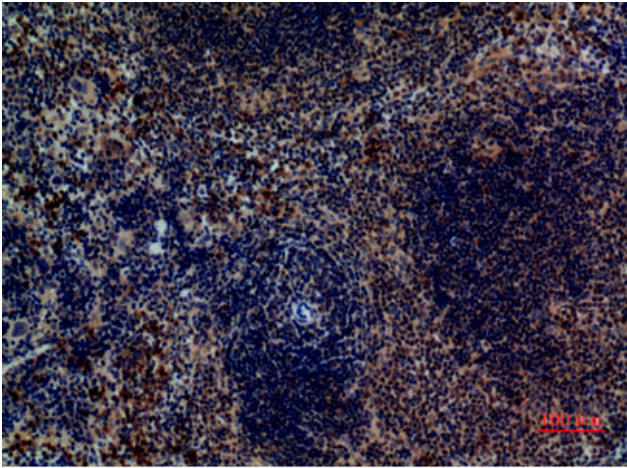


Immunohistochemical analysis of paraffin-embedded human-tonsil, antibody was diluted at 1:100

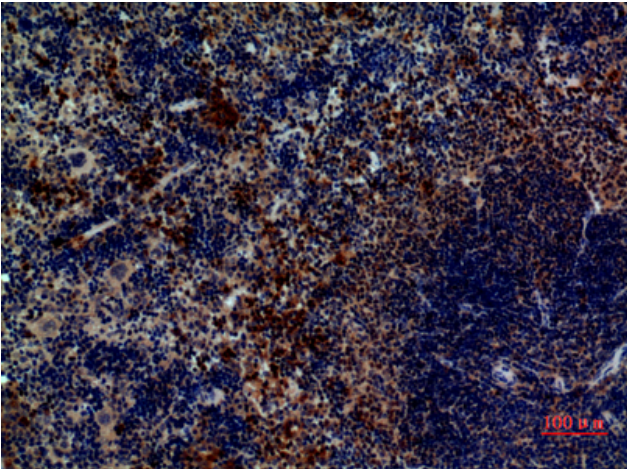


Immunohistochemical analysis of paraffin-embedded human-tonsil, antibody was diluted at 1:100

Nanjing BYabscience technology Co.,Ltd



Immunohistochemical analysis of paraffin-embedded mouse-spleen, antibody was diluted at 1:100



Immunohistochemical analysis of paraffin-embedded mouse-spleen, antibody was diluted at 1:100