



# PREP Polyclonal Antibody

<b>Catalog No</b>	BYab-15807
<b>Isotype</b>	IgG
<b>Reactivity</b>	Human;Mouse;Rat
<b>Applications</b>	WB;IHC;IF;ELISA
<b>Gene Name</b>	PREP
<b>Protein Name</b>	Prolyl endopeptidase
<b>Immunogen</b>	Synthesized peptide derived from PREP . at AA range: 10-90
<b>Specificity</b>	PREP Polyclonal Antibody detects endogenous levels of PREP protein.
<b>Formulation</b>	Liquid in PBS containing 50% glycerol, 0.5% BSA and 0.02% sodium azide.
<b>Source</b>	Polyclonal, Rabbit,IgG
<b>Purification</b>	The antibody was affinity-purified from rabbit antiserum by affinity-chromatography using epitope-specific immunogen.
<b>Dilution</b>	WB: 1/500 - 1/2000. IHC-p: 1:100-300 ELISA: 1/20000.. IF 1:50-200
<b>Concentration</b>	1 mg/ml
<b>Purity</b>	≥90%
<b>Storage Stability</b>	-20°C/1 year
<b>Synonyms</b>	PREP; PEP; Prolyl endopeptidase; PE; Post-proline cleaving enzyme
<b>Observed Band</b>	80kD
<b>Cell Pathway</b>	nucleus,cytoplasm,membrane,
<b>Tissue Specificity</b>	Blood,Brain,Lymphocyte,Skin,
<b>Function</b>	catalytic activity:Hydrolysis of Pro- -Xaa >> Ala- -Xaa in oligopeptides.,function:Cleaves peptide bonds on the C-terminal side of prolyl residues within peptides that are up to approximately 30 amino acids long.,PTM:The N-terminus is blocked.,similarity:Belongs to the peptidase S9A family.,subunit:Monomer.,
<b>Background</b>	The protein encoded by this gene is a cytosolic prolyl endopeptidase that cleaves peptide bonds on the C-terminal side of prolyl residues within peptides that are up to approximately 30 amino acids long. Prolyl endopeptidases have been reported to be involved in the maturation and degradation of peptide hormones and neuropeptides. [provided by RefSeq, Jul 2008],

Nanjing BYabscience technology Co.,Ltd



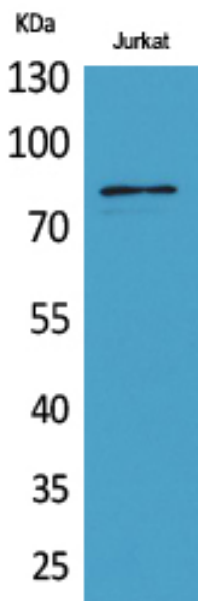
**matters needing attention**

Avoid repeated freezing and thawing!

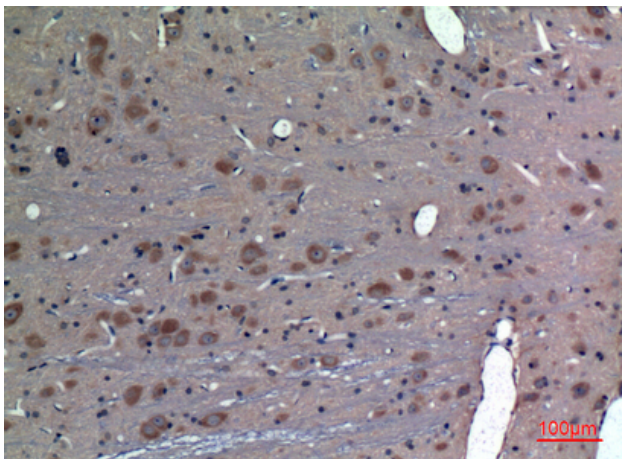
**Usage suggestions**

This product can be used in immunological reaction related experiments. For more information, please consult technical personnel.

## Products Images

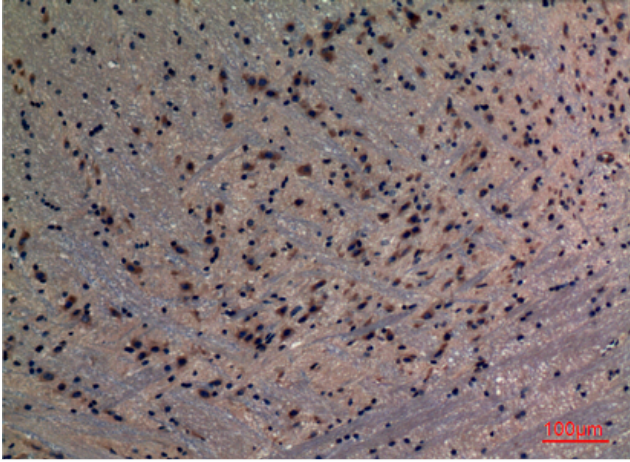


Western Blot analysis of Jurkat cells using PREP Polyclonal Antibody. Secondary antibody(catalog#:RS0002) was diluted at 1:20000



Immunohistochemical analysis of paraffin-embedded rat-brain, antibody was diluted at 1:100

Nanjing BYabscience technology Co.,Ltd



Immunohistochemical analysis of paraffin-embedded mouse-brain, antibody was diluted at 1:100